

Nur für Forschungszwecke

CARM1 Polyklonaler Antikörper

Katalog-Nr.:55246-1-AP

Vorgestelltes Produkt

10 Publikationen



Allgemeine Informationen

Katalog-Nr.:
55246-1-AP

Größe:
150ul, Konzentration: 273 µg/ml
durch die Bradford-Methode mit BSA
als Standard;

Wirt:
Kaninchen

Isotyp:
IgG

GenBank-Zugangsnummer:
NM_199141

GeneID (NCBI):
10498

Vollständiger Name:
coactivator-associated arginine
methyltransferase 1

Berechnete Masse:
66 kDa

Beobachtete Masse:
63-66 kDa, 55 kDa

Reinigungsmethode:
Antigen-Affinitätsreinigung

Empfohlene Verdünnungen:
IHC 1:50-1:500
IF 1:20-1:200

Anwendungen

Geprüfte Anwendungen:
IF, IHC, ELISA

In Publikationen genannte Anwendungen:
CoIP, IF, IHC, IP, WB

Getestete Reaktivität:
Affe, Human, Maus, Ratte

Zitierte Arten:
Human, Maus

Hinweis-IHC: Antigenmaskierung mit TE-Puffer pH 9,0 empfohlen. (*) Wahlweise kann die Antigenmaskierung auch mit Citratpuffer pH 6,0 erfolgen.

Positivkontrollen:

IHC: humanes Mammakarzinomgewebe, humanes malignes Melanomgewebe, humanes Zervixkarzinomgewebe

IF: NIH/3T3-Zellen,

Hintergrundinformationen

CARM1, also named as PRMT4, belongs to the protein arginine N-methyltransferase family. It is a dual functional coregulator that facilitates transcription initiation by methylation of Arg17 and Arg26 of histone H3 and also dictates the subsequent coactivator complex disassembly by methylation of the steroid receptor coactivator family coactivators and p300/cAMP-response element-binding protein. CARM1 functions as a coactivator for many nuclear receptors, such as oestrogen receptor, androgen receptor, thyroid receptor and farnesoid X-receptor. It also coactivates other transcription factors such as myocyte enhancer factor 2C (MEF2C), β -catenin, p53, nuclear factor (NF)- κ B and the cAMP-responsive element-binding factor. The enzymatic activity and coactivator function of CARM1 has been found to be inactivated through phosphorylation at a conserved serine residue at mitosis stage. This antibody was generated against a synthetic peptide corresponding to a fragment of human CARM1. It is expected to specifically recognize the CRAM1. In certain type of cells, like HeLa, double bands can be detected with this antibody. This may due to the additional PTM sites in cells themselves.

Bemerkenswerte Veröffentlichungen

Verfasser	Pubmed ID	Journal	Anwendung
Limei Ji	34455779	J Med Chem	WB
Guixin Wu	35557817	RSC Adv	WB
Cheng Wang	35623249	Eur J Med Chem	WB

Lagerung

Lagerungsbedingungen:
Bei -20°C lagern.

Lagerungspuffer:
PBS mit 0.02% Natriumazid und 50% Glycerin pH 7.3.

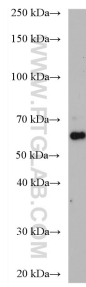
Aliquotieren ist nicht notwendig bei -20°C Lagerung

***** 20ul-Größen enthalten 0.1% BSA**

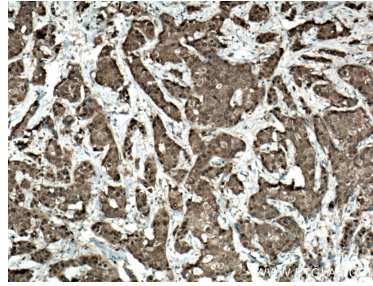
For technical support and original validation data for this product please contact:
T: 1 (888) 4PTGLAB (1-888-478-4522) (toll free in USA), or 1(312) 455-8498 (outside USA)
E: proteintech@ptglab.com
W: ptglab.com

This product is exclusively available under Proteintech Group brand and is not available to purchase from any other manufacturer.

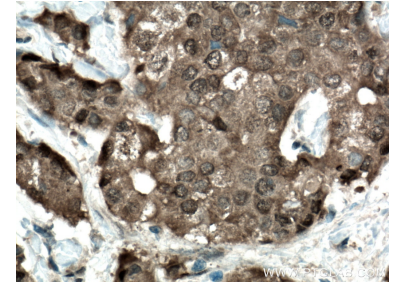
Ausgewählte Validierungsdaten



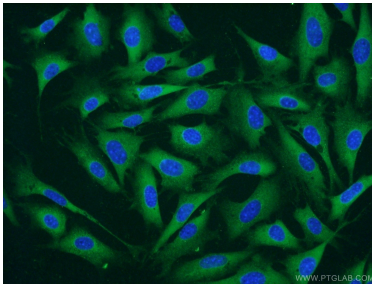
NIH/3T3 cells were subjected to SDS PAGE followed by western blot with 55246-1-AP (CARM1 antibody) at dilution of 1:1000 incubated at room temperature for 1.5 hours.



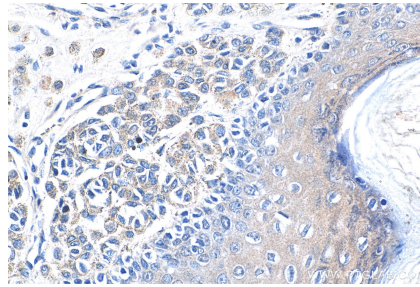
Immunohistochemical analysis of paraffin-embedded human breast cancer tissue slide using 55246-1-AP (CARM1 antibody) at dilution of 1:200 (under 10x lens. Heat mediated antigen retrieval with Tris-EDTA buffer (pH 9.0).



Immunohistochemical analysis of paraffin-embedded human breast cancer tissue slide using 55246-1-AP (CARM1 antibody) at dilution of 1:200 (under 40x lens. Heat mediated antigen retrieval with Tris-EDTA buffer (pH 9.0).



Immunofluorescent analysis of NIH/3T3 cells using 55246-1-AP (CARM1 antibody) at dilution of 1:50 and Alexa Fluor 488-conjugated AffiniPure Goat Anti-Rabbit IgG(H+L).



Immunohistochemical analysis of paraffin-embedded human malignant melanoma tissue slide using 55246-1-AP (CARM1 antibody) at dilution of 1:200 (under 40x lens).