

Nur für Forschungszwecke

Neurobeachin Polyklonaler Antikörper

Katalog-Nr.:55287-1-AP



Allgemeine Informationen

Katalog-Nr.: 55287-1-AP	GenBank-Zugangsnummer: NM_015678	Reinigungsmethode: Antigen-Affinitätsreinigung
Größe: 150ul , Konzentration: 230 µg/ml von Nanodrop;	GeneID (NCBI): 26960	Empfohlene Verdünnungen: WB 1:500-1:1000
Wirt: Kaninchen	Vollständiger Name: neurobeachin	
Isotyp: IgG	Berechnete Masse: 328 kDa	
	Beobachtete Masse: 280-300 kDa	

Anwendungen

Geprüfte Anwendungen: WB, ELISA	Positivkontrollen: WB : Maushirngewebe,
Getestete Reaktivität: Human, Maus	

Hintergrundinformationen

Neurobeachin is a member of a large, diverse group of A-kinase anchor proteins that target the activity of protein kinase A to specific subcellular sites by binding to its type II regulatory subunits. Brain-specific expression and coat protein-like membrane recruitment of a highly similar protein in mouse suggest an involvement in neuronal post-Golgi membrane traffic. Mutations in this gene may be associated with a form of autism. This gene and its expression are frequently disrupted in patients with multiple myeloma.

Lagerung

Lagerungsbedingungen:
Bei -20°C lagern. Nach dem Versand ein Jahr lang stabil
Lagerungspuffer:
PBS mit 0.02% Natriumazid und 50% Glycerin pH 7.3.
Aliquotieren ist nicht notwendig bei -20°C Lagerung

***** 20ul-Größen enthalten 0.1% BSA**

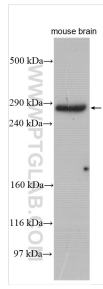
For technical support and original validation data for this product please contact:

T: 1 (888) 4PTGLAB (1-888-478-4522) (toll free in USA), or 1(312) 455-8498 (outside USA)

E: proteintech@ptglab.com
W: ptglab.com

This product is exclusively available under Proteintech Group brand and is not available to purchase from any other manufacturer.

Ausgewählte Validierungsdaten



mouse brain tissue were subjected to SDS PAGE followed by western blot with 55287-1-AP (Neurobeachin antibody) at dilution of 1:600 incubated at room temperature for 1.5 hours.