

Nur für Forschungszwecke

# ZGLP1 Polyklonaler Antikörper

Katalog-Nr.:55292-1-AP



## Allgemeine Informationen

|  |   |  |
|--|---|--|
| <b>Katalog-Nr.:</b><br>55292-1-AP  | <b>GenBank-Zugangsnummer:</b><br>NM_001103167     | <b>Reinigungsmethode:</b><br>Antigen-Affinitätsreinigung             |
| <b>Größe:</b><br>150ul , Konzentration: 1000 µg/ml von100125288<br>Nanodrop und 400 µg/ml durch die<br>Bradford-Methode mit BSA als<br>Standard; | <b>GeneID (NCBI):</b><br>100125288                | <b>Empfohlene Verdünnungen:</b><br>WB 1:200-1:1000<br>IHC 1:20-1:200 |
| <b>Wirt:</b><br>Kaninchen  | <b>Vollständiger Name:</b><br>GATA like protein-1 |  |
| <b>Isotyp:</b><br>IgG  | <b>Berechnete Masse:</b><br>30 kDa                |  |
|  | <b>Beobachtete Masse:</b><br>30 kDa               |  |

## Anwendungen

|   |   |
|---|---|
| <b>Geprüfte Anwendungen:</b><br>IHC, WB,ELISA   | <b>Positivkontrollen:</b><br>WB : Maus-Eierstockgewebe,<br>IHC : humanes Eierstockgewebe, |
| <b>Getestete Reaktivität:</b><br>Human, Maus  |   |
| <b>Hinweis-IHC: Antigenmaskierung mit TE-Puffer pH 9,0 empfohlen. (*) Wahlweise kann die Antigenmaskierung auch mit Citratpuffer pH 6,0 erfolgen.</b> |   |

## Hintergrundinformationen

ZGLP1, also known as GLP-1, is a nuclear protein containing two zinc fingers, one of which is highly homologous to the conserved GATA zinc finger DNA binding motif. It is a transcriptional repressor that plays a central role in somatic cells of the gonad and is required for germ cell development.

## Lagerung

**Lagerungsbedingungen:**  
Bei -20°C lagern.  
**Lagerungspuffer:**  
PBS mit 0.02% Natriumazid und 50% Glycerin pH 7.3.  
Aliquotieren ist nicht notwendig bei -20°C Lagerung

\*\*\* 20ul-Größen enthalten 0.1% BSA

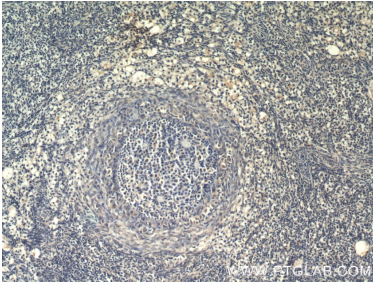
For technical support and original validation data for this product please contact:

T: 1 (888) 4PTGLAB (1-888-478-4522) (toll free in USA), or 1(312) 455-8498 (outside USA)

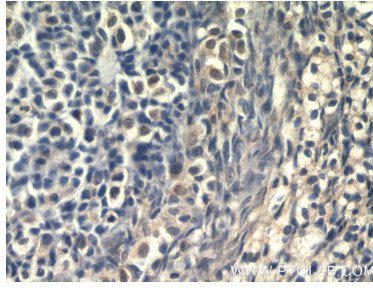
E: proteintech@ptglab.com  
W: ptglab.com

This product is exclusively available under Proteintech Group brand and is not available to purchase from any other manufacturer.

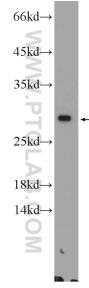
## Ausgewählte Validierungsdaten



Immunohistochemical analysis of paraffin-embedded human ovary using 55292-1-AP (GLP1 antibody) at dilution of 1:50 (under 10x lens).



Immunohistochemical analysis of paraffin-embedded human ovary using 55292-1-AP (GLP1 antibody) at dilution of 1:50 (under 40x lens).



mouse ovary tissue were subjected to SDS PAGE followed by western blot with 55292-1-AP (ZGLP1 Antibody) at dilution of 1:300 incubated at room temperature for 1.5 hours.