

Allgemeine Informationen

Katalog-Nr.:

55296-1-AP

Größe:

150ul , Konzentration: 650 µg/ml von Nanodrop;

Wirt:

Kaninchen

Isotyp:

IgG

GenBank-Zugangsnummer:

NM_005370

GeneID (NCBI):

4218

Vollständiger Name:

RAB8A, member RAS oncogene family

Berechnete Masse:

24 kDa

Beobachtete Masse:

24 kDa

Reinigungsmethode:

Antigen-Affinitätsreinigung

Empfohlene Verdünnungen:

WB 1:500-1:2000
IP 0.5-4.0 ug für IP und 1:500-1:1000 für WB
IHC 1:50-1:500

Anwendungen

Geprüfte Anwendungen:

IHC, IP, WB, ELISA

In Publikationen genannte Anwendungen:

IF, IHC, WB

Getestete Reaktivität:

Human, Maus, Ratte

Zitierte Arten:

Human, Hund, Maus, Ratte

Hinweis-IHC: Antigenmaskierung mit TE-Puffer pH 9,0 empfohlen. (*) Wahlweise kann die Antigenmaskierung auch mit Citratpuffer pH 6,0 erfolgen.

Positivkontrollen:

WB : A431-Zellen, HeLa-Zellen, HepG2-Zellen, humanes Hirngewebe, Maushautgewebe, Mauslungengewebe, NIH/3T3-Zellen

IP : HeLa-Zellen,

IHC : humanes Kolonkarzinomgewebe,

Hintergrundinformationen

The Rab8 GTPase is a member of the Ras superfamily that functions in protein transport and membrane restructuring. RAB8 has two isoforms, RAB8A and RAB8B, that share 40% amino acid identity in the C-terminal variable region. RAB8 activity is regulated by specific guanine nucleotide exchange factors (GEFs), that mediate GTP loading, and GTPase activating proteins (GAPs) that convert them into the inactive GDP-bound form. RAB8 participates in recycling of the α -amino-3-hydroxy-5-methyl-4-isoxazolepropionic acid (AMPA) receptors to the dendritic spine surface as well as in the intracellular transport of the metabotropic glutamate receptor type 1 in neuronal cells. Rab8 is activated at the base of the cilium by its guanine nucleotide exchanger Rabin8. The antibody 11792-1-AP can detect both RAB8A and RAB8B. 55295-1-AP is specific to RAB8B and 55296-1-AP is specific to RAB8A.

Bemerkenswerte Veröffentlichungen

Verfasser	Pubmed ID	Journal	Anwendung
Khamal K Ampah	30254024	J Cell Sci	IF
Min Liu	34480124	Cell Res	WB, IF
Fangyan Yu	27767179	Sci Rep	IF

Lagerung

Lagerungsbedingungen:

Bei -20°C lagern.

Lagerungspuffer:

PBS mit 0.02% Natriumazid und 50% Glycerin pH 7.3.

Aliquotieren ist nicht notwendig bei -20°C Lagerung

*** 20ul-Größen enthalten 0.1% BSA

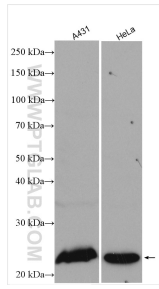
For technical support and original validation data for this product please contact:

T: 1 (888) 4PTGLAB (1-888-478-4522) (toll free in USA), or 1(312) 455-8498 (outside USA)

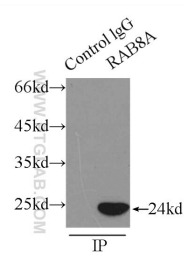
E: proteintech@ptglab.com
W: ptglab.com

This product is exclusively available under Proteintech Group brand and is not available to purchase from any other manufacturer.

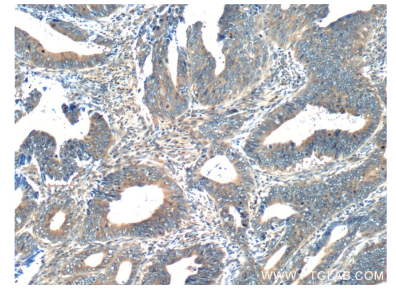
Ausgewählte Validierungsdaten



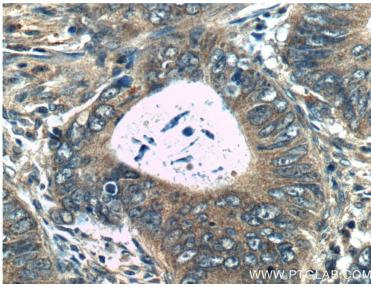
Various lysates were subjected to SDS PAGE followed by western blot with 55296-1-AP (RAB8A antibody) at dilution of 1:1000 incubated at room temperature for 1.5 hours.



IP Result of anti-RAB8A (IP:55296-1-AP, 3ug; Detection:55296-1-AP 1:500) with HeLa cells lysate 2500ug.



Immunohistochemical analysis of paraffin-embedded human colon cancer tissue slide using 55296-1-AP (RAB8A Antibody) at dilution of 1:200 (under 10x lens).



Immunohistochemical analysis of paraffin-embedded human colon cancer tissue slide using 55296-1-AP (RAB8A Antibody) at dilution of 1:200 (under 40x lens).