

Nur für Forschungszwecke

SETD2 Polyklonaler Antikörper

Katalog-Nr.:55377-1-AP

Vorgestelltes Produkt

3 Publikationen



Allgemeine Informationen

Katalog-Nr.: 55377-1-AP	GenBank-Zugangsnummer: NM_014159	Reinigungsmethode: Antigen-Affinitätsreinigung
Größe: 150ul , Konzentration: 1000 µg/ml von29072 Nanodrop und 580 µg/ml durch die Bradford-Methode mit BSA als Standard;	GeneID (NCBI): SET domain containing 2	Empfohlene Verdünnungen: WB 1:500-1:1000 IHC 1:50-1:500 IF 1:20-1:200
Wirt: Kaninchen	Vollständiger Name: SET domain containing 2	
Isotyp: IgG	Berechnete Masse: 288 kDa	
	Beobachtete Masse: 287 kDa	

Anwendungen

Geprüfte Anwendungen: IF, IHC, WB, ELISA	Positivkontrollen: WB : Jurkat-Zellen, K-562-Zellen, U2OS-Zellen
In Publikationen genannte Anwendungen: WB	IHC : humanes Kolonkarzinomgewebe, humanes Ösophaguskarzinomgewebe
Getestete Reaktivität: Human	IF : HepG2-Zellen,
Zitierte Arten: Human	
Hinweis-IHC: Antigendemaskierung mit TE-Puffer pH 9,0 empfohlen. (*) Wahlweise kann die Antigendemaskierung auch mit Citratpuffer pH 6,0 erfolgen.	

Hintergrundinformationen

SETD2, also named as HIF1, HYPB, KIAA1732, KMT3A, SET2, p231HBP, hSET2 and HIP-1, belongs to the histone-lysine methyltransferase family and SET2 subfamily. It is a histone methyltransferase that methylates 'Lys-36' of histone H3. SETD2 probably plays a role in chromatin structure modulation during elongation via its interaction with hyperphosphorylated POLR2A. It binds DNA at promoters. SETD2 may also act as a transcription activator that binds to promoters.(PMID:16118227) It is a potential tumour suppressor gene in breast cancer.(PMID:20944102) This antibody is specific to SETD2.

Bemerkenswerte Veröffentlichungen

Verfasser	Pubmed ID	Journal	Anwendung
Ruiqiong Liu	29846670	Nucleic Acids Res	WB
Jie Gao	30052810	Carcinogenesis	
Wentao Liu	35081978	J Exp Clin Cancer Res	WB

Lagerung

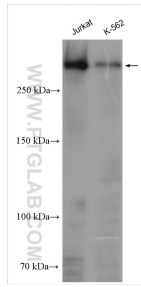
Lagerungsbedingungen:
Bei -20°C lagern. Nach dem Versand ein Jahr lang stabil
Lagerungspuffer:
PBS mit 0.02% Natriumazid und 50% Glycerin pH 7.3.
Aliquotieren ist nicht notwendig bei -20°C Lagerung

*** 20ul-Größen enthalten 0.1% BSA

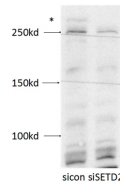
For technical support and original validation data for this product please contact:
T: 1 (888) 4PTGLAB (1-888-478-4522) (toll free in USA), or 1(312) 455-8498 (outside USA)
E: proteintech@ptglab.com
W: ptglab.com

This product is exclusively available under Proteintech Group brand and is not available to purchase from any other manufacturer.

Ausgewählte Validierungsdaten

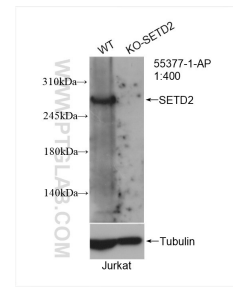


Various lysates were subjected to SDS PAGE followed by western blot with 55377-1-AP (SETD2 antibody) at dilution of 1:500 incubated at room temperature for 1.5 hours.

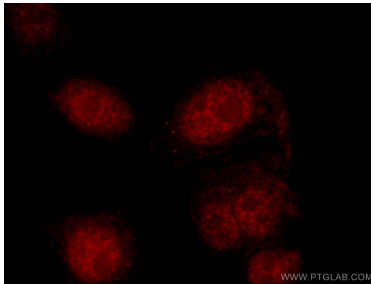


Negative control or SETD2 specific siRNAs were transfected into U2-OS cells with the final concentration of 20 nM. Forty eight hours after transfection, cells were lysed with RIPA buffer and subjected to SDS PAGE. The antibody dilution used for western blot was 1:500.

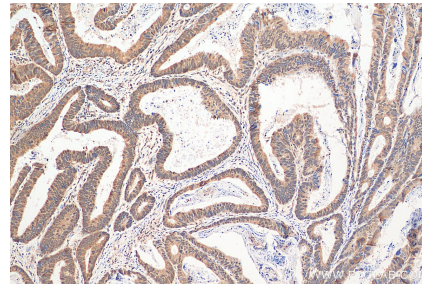
WB result of SETD2 antibody (55377-1-AP, 1:500) with siRNA transfected U2-OS cells.



WB result of SETD2 antibody (55377-1-AP; 1:400; room temperature for 1.5 hours) with wild-type and SETD2 knockout Jurkat cells.



Immunofluorescent analysis of HepG2 cells using 55377-1-AP (SETD2 antibody) at dilution of 1:50 and Rhodamine-Goat anti-Rabbit IgG.



Immunohistochemical analysis of paraffin-embedded human colon cancer tissue slide using 55377-1-AP (SETD2 antibody) at dilution of 1:200 (under 10x lens). Heat mediated antigen retrieval with Tris-EDTA buffer (pH 9.0).