

Nur für Forschungszwecke

HLA-F Polyklonaler Antikörper

Katalog-Nr.:55379-1-AP



Allgemeine Informationen

Katalog-Nr.: 55379-1-AP	GenBank-Zugangsnummer: NM_018950	Reinigungsmethode: Antigen-Affinitätsreinigung
Größe: 150ul , Konzentration: 1000 µg/ml von3134 Nanodrop und 573 µg/ml durch die Bradford-Methode mit BSA als Standard;	GeneID (NCBI): Vollständiger Name: major histocompatibility complex, class I, F	Empfohlene Verdünnungen: WB 1:500-1:2000
Wirt: Kaninchen	Berechnete Masse: 50 kDa	
Isotyp: IgG	Beobachtete Masse: 50 kDa, 66-70 kDa	

Anwendungen

Geprüfte Anwendungen: WB,ELISA	Positivkontrollen: WB : Raji-Zellen, A431-Zellen, humanes Plazenta- Gewebe, Jurkat-Zellen, Mausmilzgewebe
Getestete Reaktivität: Human, Maus	

Hintergrundinformationen

Human major histocompatibility complex (MHC) antigens, also referred to as human leukocyte antigens (HLA), are encoded by genes located on the short arm of chromosome 6 (6p21.3). There are two classes of HLA antigens: class I and class II. This class I molecules are membrane glycoproteins composed of a heavy (alpha) chain which is encoded by a HLA class I gene, and β 2-microglobulin light (beta) chain. The most extensively characterized members of the HLA class I gene family are the genes encoding the major transplantation antigens, HLA-A, B and C. HLA-F is a non-classical MHC class I molecule. (PMID: 667938; 3375250; 2249951)

Lagerung

Lagerungsbedingungen:
Bei -20°C lagern.
Lagerungspuffer:
PBS mit 0.02% Natriumazid und 50% Glycerin pH 7.3.
Aliquotieren ist nicht notwendig bei -20°C Lagerung

***** 20ul-Größen enthalten 0.1% BSA**

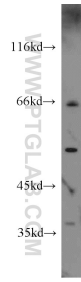
For technical support and original validation data for this product please contact:

T: 1 (888) 4PTGLAB (1-888-478-4522) (toll free
in USA), or 1(312) 455-8498 (outside USA)

E: proteintech@ptglab.com
W: ptglab.com

This product is exclusively available under Proteintech Group brand and is not available to purchase from any other manufacturer.

Ausgewählte Validierungsdaten



Raji cells were subjected to SDS PAGE followed by western blot with 55379-1-AP (HLA-F antibody) at dilution of 1:1000 incubated at room temperature for 1.5 hours.