

Nur für Forschungszwecke

# KIF15 Polyklonaler Antikörper

Katalog-Nr.:55407-1-AP

Vorgestelltes Produkt

19 Publikationen



## Allgemeine Informationen

### Katalog-Nr.:

55407-1-AP

### Größe:

150ul, Konzentration: 900 µg/ml von Nanodrop und 807 µg/ml durch die Bradford-Methode mit BSA als Standard;

### Wirt:

Kaninchen

### Isotyp:

IgG

### GenBank-Zugangsnummer:

NM\_020242

### GeneID (NCBI):

56992

### Vollständiger Name:

kinesin family member 15

### Berechnete Masse:

160 kDa

### Beobachtete Masse:

150-165 kDa

### Reinigungsmethode:

Antigen-Affinitätsreinigung

### Empfohlene Verdünnungen:

WB 1:2000-1:10000

IP 0.5-4.0 µg für IP und 1:500-1:1000

für WB

IHC 1:20-1:200

IF 1:20-1:200

## Anwendungen

### Geprüfte Anwendungen:

IF, IHC, IP, WB, ELISA

### In Publikationen genannte Anwendungen:

IF, IHC, WB

### Getestete Reaktivität:

Human, Maus

### Zitierte Arten:

Human, Maus, Ratte, Zebrafisch

**Hinweis-IHC: Antigendemaskierung mit TE-Puffer pH 9,0 empfohlen. (\*) Wahlweise kann die Antigendemaskierung auch mit Citratpuffer pH 6,0 erfolgen.**

### Positivkontrollen:

WB : Jurkat-Zellen, HEK-293-Zellen, Maus-Thymusgewebe, MDA-MB-453s-Zellen

IP : Maus-Thymusgewebe,

IHC : humanes Hodengewebe,

IF : HEK-293-Zellen,

## Hintergrundinformationen

KIF15, also named as KLP2 and KNSL7, belongs to the kinesin-like protein family and KLP2 subfamily. It is a plus-end directed kinesin-like motor enzyme which involved in mitotic spindle assembly. Several isoforms of KIF15 exist due to the alternative splicing, with molecular weight between 130-160 kDa. Sometimes higher molecular weight around 200 kDa can also be observed, which may be a modified variant of KIF15. (14618103)

## Bemerkenswerte Veröffentlichungen

Verfasser	Pubmed ID	Journal	Anwendung
Yanchao Ma	33011740	Cell Death Dis	IHC,WB,IF
Yuan Qiao	30439711	Cell Physiol Biochem	WB,IHC
Lin Gao	34804913	Front Oncol	WB,IHC

## Lagerung

### Lagerungsbedingungen:

Bei -20°C lagern. Nach dem Versand ein Jahr lang stabil

### Lagerungspuffer:

PBS mit 0.02% Natriumazid und 50% Glycerin pH 7.3.

Aliquotieren ist nicht notwendig bei -20°C Lagerung

\*\*\* 20ul-Größen enthalten 0.1% BSA

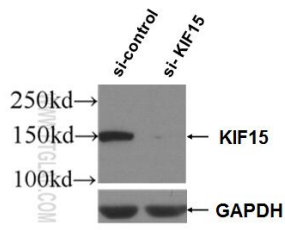
For technical support and original validation data for this product please contact:

T: 1 (888) 4PTGLAB (1-888-478-4522) (toll free in USA), or 1(312) 455-8498 (outside USA)

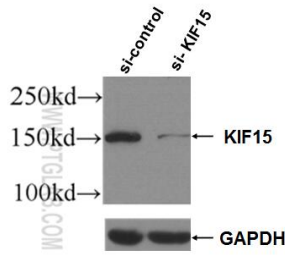
E: proteintech@ptglab.com  
W: ptglab.com

This product is exclusively available under Proteintech Group brand and is not available to purchase from any other manufacturer.

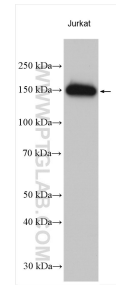
## Ausgewählte Validierungsdaten



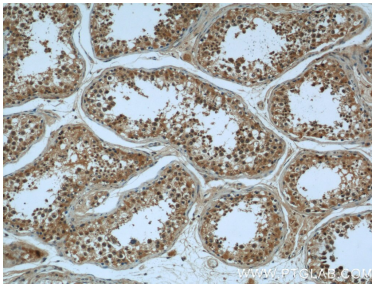
WB result of KIF15 antibody (55407-1-AP; 1:3000; incubated at room temperature for 1.5 hours) with sh-Control and sh-KIF15 transfected HEK-293 cells.



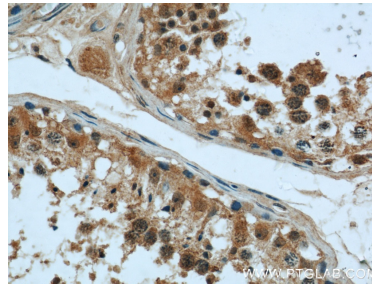
WB result of KIF15 antibody (55407-1-AP; 1:3000; incubated at room temperature for 1.5 hours) with sh-Control and sh-KIF15 transfected Jurkat cells.



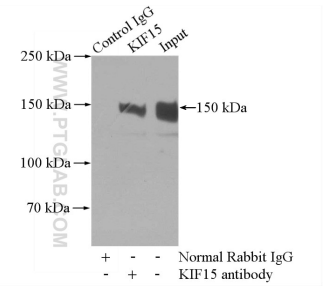
Jurkat cells were subjected to SDS PAGE followed by western blot with 55407-1-AP (KIF15 antibody) at dilution of 1:5000 incubated at room temperature for 1.5 hours.



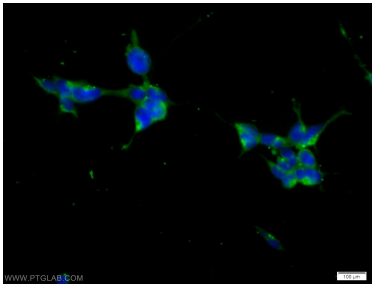
Immunohistochemical analysis of paraffin-embedded human testis using 55407-1-AP (KIF15 antibody) at dilution of 1:50 (under 10x lens).



Immunohistochemical analysis of paraffin-embedded human testis using 55407-1-AP (KIF15 antibody) at dilution of 1:50 (under 40x lens).



IP Result of anti-KIF15 (IP:55407-1-AP, 4ug; Detection:55407-1-AP 1:500) with mouse thymus tissue lysate 2800ug.



Immunofluorescent analysis of HEK-293 cells using 55407-1-AP (KIF15 antibody) at dilution of 1:50 and Alexa Fluor 488-conjugated AffiniPure Goat Anti-Rabbit IgG(H+L).