

Nur für Forschungszwecke

PYGL Polyklonaler Antikörper

Katalog-Nr.:55429-1-AP



Allgemeine Informationen

Katalog-Nr.:
55429-1-AP

Größe:

150ul , Konzentration: 1000 µg/ml von 5836

Nanodrop und 507 µg/ml durch die Bradford-Methode mit BSA als Standard;

Wirt:

Kaninchen

Isotyp:

IgG

GenBank-Zugangsnummer:

NM_002863

GeneID (NCBI):

Vollständiger Name:
phosphorylase, glycogen, liver

Berechnete Masse:

97 kDa

Beobachtete Masse:

97-105 kDa

Reinigungsmethode:

Antigen-Affinitätsreinigung

Empfohlene Verdünnungen:

WB 1:500-1:1000

IP 0.5-4.0 ug für IP und 1:500-1:1000 für WB

IF 1:20-1:200

Anwendungen

Geprüfte Anwendungen:

IF, IP, WB, ELISA

Getestete Reaktivität:

Human, Maus

Positivkontrollen:

WB : HepG2-Zellen, HeLa-Zellen

IP : HepG2-Zellen,

IF : HepG2-Zellen,

Hintergrundinformationen

PYGL belongs to the glycogen phosphorylase family. Phosphorylase is an important allosteric enzyme in carbohydrate metabolism. Enzymes from different sources differ in their regulatory mechanisms and in their natural substrates. However, all known phosphorylases share catalytic and structural properties. Defects in PYGL are the cause of glycogen storage disease type 6 (GSD6). This antibody is specific to PYGL. It has no cross reaction to PYGM and PYGB.

Lagerung

Lagerungsbedingungen:

Bei -20°C lagern.

Lagerungspuffer:

PBS mit 0.02% Natriumazid und 50% Glycerin pH 7.3.

Aliquotieren ist nicht notwendig bei -20°C Lagerung

*** 20ul-Größen enthalten 0.1% BSA

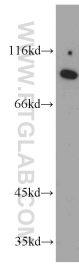
For technical support and original validation data for this product please contact:

T: 1 (888) 4PTGLAB (1-888-478-4522) (toll free in USA), or 1(312) 455-8498 (outside USA)

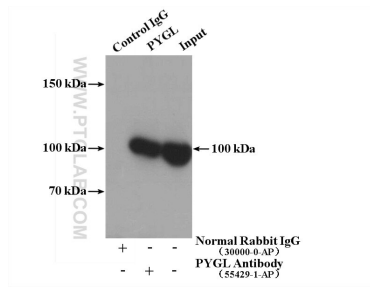
E: proteintech@ptglab.com
W: ptglab.com

This product is exclusively available under Proteintech Group brand and is not available to purchase from any other manufacturer.

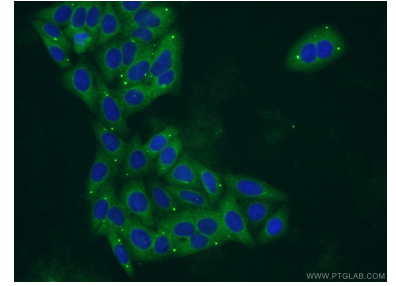
Ausgewählte Validierungsdaten



HepG2 cells were subjected to SDS PAGE followed by western blot with 55429-1-AP (PYGL antibody) at dilution of 1:500 incubated at room temperature for 1.5 hours.



IP Result of anti-PYGL (IP:55429-1-AP, 4ug; Detection:55429-1-AP 1:500) with HepG2 cells lysate 2400ug.



Immunofluorescent analysis of HepG2 cells using 55429-1-AP (PYGL antibody) at dilution of 1:50 and Alexa Fluor 488-conjugated AffiniPure Goat Anti-Rabbit IgG(H+L).