

Allgemeine Informationen

Katalog-Nr.: 60004-1-Ig	GenBank-Zugangsnummer: BC004109	Reinigungsmethode: Protein-A-Reinigung
Größe: 150ul , Konzentration: 1000 µg/ml von2597 Nanodrop;	GeneID (NCBI): 2597	CloneNo.: 1E6D9
Wirt: Maus	Vollständiger Name: glyceraldehyde-3-phosphate dehydrogenase	Empfohlene Verdünnungen: WB 1:50000-1:500000 IP 0.5-4.0 ug für IP und 1:2000-1:12000 für WB
Isotyp: IgG2b	Berechnete Masse: 36 kDa	IF 1:200-1:2000
Immunogen Katalognummer: AG0766	Beobachtete Masse: 36 kDa	

Anwendungen

Geprüfte Anwendungen:

FC, IF, IP, WB, ELISA

In Publikationen genannte Anwendungen:

Cell treatment, ChIP, CoIP, FC, IF, IHC, IP, WB

Getestete Reaktivität:

Hefe, Human, Maus, Pflanze, Ratte, Zebrafisch

Zitierte Arten:

Arabidopsis, Caenorhabditis Elegans, Huhn, Hund, Rind, Bombyx Mori

Positivkontrollen:

WB : HeLa-Zellen, 4T1-Zellen, Arabidopsis-Gewebe (aus der gesamten Pflanze), C2C12-Zellen, C6-Zellen, Hausschwein-Hirngewebe, HEK-293-Zellen, HepG2-Zellen, Jurkat-Zellen, K-562-Zellen, Maushirngewebe, Nematodenzellen (aus dem gesamten Tier), NIH/3T3-Zellen, PC-12-Zellen, Rattenhirngewebe, ROS1728-Zellen, Sojabohnengewebe (aus der gesamten Pflanze), Sp2/O-Zellen, Zebrafischgewebe

IP : HeLa-Zellen,

IF : Mit Etacrynsäure behandelte HeLa-Zellen,

Hintergrundinformationen

Glyceraldehyde-3-phosphate dehydrogenase (GAPDH) catalyzes the phosphorylation of glyceraldehyde-3-phosphate during glycolysis. GAPDH participates in nuclear events including transcription, binding RNA, RNA transportation, DNA replication, DNA repair and apoptosis. Being stably and constitutively expressed at high levels in most tissues and cells, GAPDH is considered a housekeeping protein. It is widely used as a control for RT-PCR and also loading control in electrophoresis and Western blotting. GAPDH is normally expressed in cellular cytoplasm or membrane, but can occasionally translocate to the nucleus after the addition of post-translational modifications such as S-nitrosylation. This antibody is raised against full length GAPDH of human origin. It can recognize the 36 kDa GAPDH protein in most cells/tissues. In addition, a band below 36 kDa can always be detected as the isoform or spliced product of GAPDH (PMID: 23885286, 23877755, 19368702). Please note that some physiological factors, such as hypoxia and diabetes, increase GAPDH expression in certain cell types. For murine tissue samples, conjugated mouse antibody HRP-60004 and rabbit antibody 10494-1-AP are preferable.

Bemerkenswerte Veröffentlichungen

Verfasser	Pubmed ID	Journal	Anwendung
Yuying Wang	36183783	Chem Biol Interact	WB
Xin Shen	36184549	Int Heart J	WB
Yueke Lin	36178239	EMBO Rep	WB,IP

Lagerung

Lagerungsbedingungen:

Bei -20°C lagern. Nach dem Versand ein Jahr lang stabil

Lagerungspuffer:

PBS mit 0.02% Natriumazid und 50% Glycerin pH 7.3.

Aliquotieren ist nicht notwendig bei -20°C Lagerung

***** 20ul-Größen enthalten 0.1% BSA**

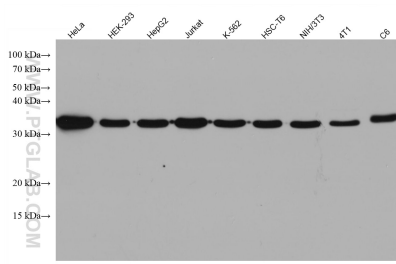
For technical support and original validation data for this product please contact:

T: 1 (888) 4PTGLAB (1-888-478-4522) (toll free in USA), or 1(312) 455-8498 (outside USA)

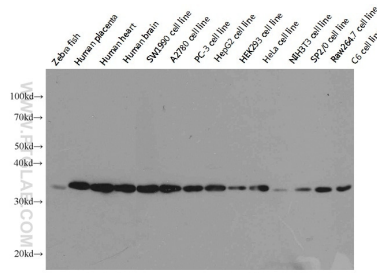
E: proteintech@ptglab.com
 W: ptglab.com

This product is exclusively available under Proteintech Group brand and is not available to purchase from any other manufacturer.

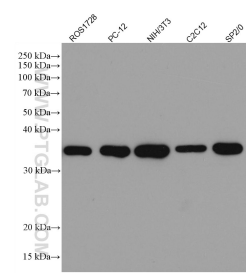
Ausgewählte Validierungsdaten



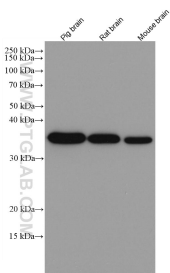
Various lysates were subjected to SDS PAGE followed by western blot with 60004-1-Ig (GAPDH antibody) at dilution of 1:200000 incubated at room temperature for 1.5 hours.



Western blot analysis of GAPDH in various tissues and cell lines using Proteintech antibody 60004-1-Ig at a dilution of 1:10000.

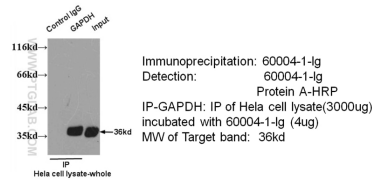


Various lysates were subjected to SDS PAGE followed by western blot with 60004-1-Ig (GAPDH antibody) at dilution of 1:50000 incubated at room temperature for 1.5 hours.

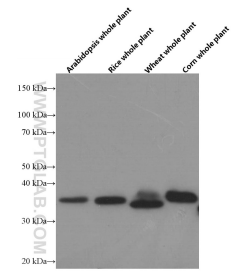


Various lysates were subjected to SDS PAGE followed by western blot with 60004-1-Ig (GAPDH antibody) at dilution of 1:50000 incubated at room temperature for 1.5 hours.

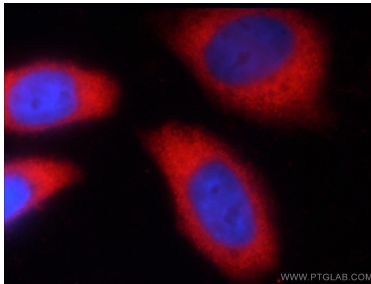
IP & WB of 60004-1-Ig with HeLa Cell



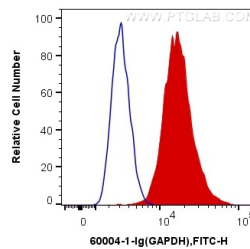
IP result of anti-GAPDH (60004-1-Ig for IP and Detection) with HeLa cell lysate.



Arabidopsis, rice, wheat, corn whole plant tissue were subjected to SDS PAGE followed by western blot with 60004-1-Ig (GAPDH Antibody) at dilution of 1:10000 incubated at room temperature for 1.5 hours.



Immunofluorescent analysis of EA treated HeLa cells using 60004-1-Ig (GAPDH antibody) at dilution of 1:50 and Rhodamine-labeled goat anti-mouse IgG (red).



1X10⁶ HeLa cells were intracellularly stained with 0.4 ug Anti-Human GAPDH (60004-1-Ig, Clon:1E6D9) and CoraLite@488-Conjugated AffiniPure Goat Anti-Mouse IgG(H+L) at dilution 1:1000 (red), or 0.4 ug Mouse IgG2b Isotype Control (66360-3-Ig, Clon: K11B8C4B5) (blue). Cells were fixed with 4% PFA and permeabilized with Flow Cytometry Perm Buffer (PF00011-C).