

Nur für Forschungszwecke

# CD38 Monoklonaler Antikörper

Katalog-Nr.: 60006-1-Ig

Vorgestelltes Produkt

6 Publikationen



## Allgemeine Informationen

Katalog-Nr.:

60006-1-Ig

Größe:

150ul, Konzentration: 880 µg/ml durch die Bradford-Methode mit BSA als Standard;

Wirt:

Maus

Isotyp:

IgG1

Immunogen Katalognummer:

AG0487

GenBank-Zugangsnummer:

BC007964

GeneID (NCBI):

952

Vollständiger Name:

CD38 molecule

Berechnete Masse:

300 aa, 34 kDa

Beobachtete Masse:

45 kDa

Reinigungsmethode:

Protein-A-Reinigung

CloneNo.:

3C6G4

Empfohlene Verdünnungen:

WB 1:500-1:2000

IF 1:10-1:100

## Anwendungen

Geprüfte Anwendungen:

FC, IF, WB, ELISA

In Publikationen genannte Anwendungen:

IF, WB

Getestete Reaktivität:

Human, Maus

Zitierte Arten:

Human, Maus

Positivkontrollen:

WB : Jurkat-Zellen, Raji-Zellen

IF : NIH/3T3-Zellen,

## Hintergrundinformationen

CD38, also known as ADP-ribosyl cyclase 1, is a type II transmembrane glycoprotein with a short N-terminal cytoplasmic tail, a single membrane-spanning domain, and a C-terminal extracellular region with four N-glycosylation sites (PMID: 2319135). The extracellular domain of CD38 has bifunctional enzyme activities that catalyze synthesis of cyclic ADP ribose from nicotinamide adenine dinucleotide (NAD) and hydrolysis of cyclic ADP ribose to adenosine diphosphoribose (PMID: 10636863). CD38 is expressed on a variety of hematopoietic and non-hematopoietic cells and is involved in diverse processes such as generation of calcium-mobilizing metabolites, cell activation, and chemotaxis (PMID: 25938500).

## Bemerkenswerte Veröffentlichungen

Verfasser	Pubmed ID	Journal	Anwendung
Teresa W-M Fan	36150727	J Immunol	
Yun Wang	32460411	Glia	WB
Huiwen Zheng	35594870	Cell Rep	IF

## Lagerung

Lagerungsbedingungen:

Bei -20°C lagern. Nach dem Versand ein Jahr lang stabil

Lagerungspuffer:

PBS mit 0.02% Natriumazid und 50% Glycerin pH 7.3.

Aliquotieren ist nicht notwendig bei -20°C Lagerung

\*\*\* 20ul-Größen enthalten 0.1% BSA

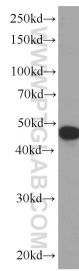
For technical support and original validation data for this product please contact:

T: 1 (888) 4PTGLAB (1-888-478-4522) (toll free in USA), or 1(312) 455-8498 (outside USA)

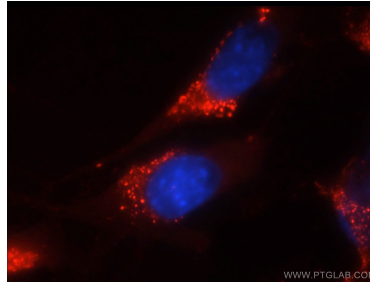
E: [proteintech@ptglab.com](mailto:proteintech@ptglab.com)  
W: [ptglab.com](http://ptglab.com)

This product is exclusively available under Proteintech Group brand and is not available to purchase from any other manufacturer.

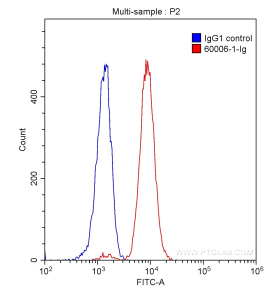
## Ausgewählte Validierungsdaten



Jurkat cells were subjected to SDS PAGE followed by western blot with 60006-1-Ig (CD38 Antibody) at dilution of 1:1000 incubated at room temperature for 1.5 hours.



Immunofluorescent analysis of NIH/3T3 cells using 60006-1-Ig (CD38 antibody) at dilution of 1:25 and Rhodamine-Goat anti-Mouse IgG.



$1 \times 10^6$  Daudi cells were stained with 0.20 ug Anti-Human CD38 (60006-1-Ig, Clone: 3C6G4) (red) or 0.20 ug isotype control antibody (blue) and CoraLite®488-Conjugated AffiniPure Goat Anti-Mouse IgG(H+L) with dilution 1:1000. Cells were fixed with 90% MeOH.