

Nur für Forschungszwecke

# TGFBI / BIGH3 Monoklonaler Antikörper



Katalog-Nr.: 60007-1-Ig

Vorgestelltes Produkt

8 Publikationen

## Allgemeine Informationen

Katalog-Nr.: 60007-1-Ig

Größe:

150ul, Konzentration: 1772 µg/ml von 7045

Nanodrop und 1000 µg/ml durch die Bradford-Methode mit BSA als Standard;

Wirt:

Maus

Isotyp:

IgG2a

Immunogen Katalognummer: AG0241

GenBank-Zugangsnummer:

BC000097

GeneID (NCBI):

7045

Vollständiger Name:

transforming growth factor, beta-induced, 68kDa

Berechnete Masse:

683 aa, 75 kDa

Beobachtete Masse:

68 kDa

Reinigungsmethode:

Caprylsäure/Ammoniumsulfat-Präzipitation

CloneNo.:

3E11D11

Empfohlene Verdünnungen:

WB 1:500-1:2000

IP 0.5-4.0 µg für IP und 1:200-1:1000 für WB

IHC 1:500-1:2000

IF 1:200-1:800

## Anwendungen

Geprüfte Anwendungen:

IF, IHC, IP, WB, ELISA

In Publikationen genannte Anwendungen:

IF, IHC, IP, WB

Getestete Reaktivität:

Human

Zitierte Arten:

Human, Maus

**Hinweis-IHC: Antigenmaskierung mit TE-Puffer pH 9,0 empfohlen. (\*) Wahlweise kann die Antigenmaskierung auch mit Citratpuffer pH 6,0 erfolgen.**

Positivkontrollen:

WB: humanes Nierengewebe,

IP: HeLa-Zellen,

IHC: humanes Kolongewebe, humanes Hautkrebsgewebe, humanes Kolonkarzinomgewebe, humanes Nierengewebe, humanes Plazenta-Gewebe

IF: humanes Kolonkarzinomgewebe,

## Hintergrundinformationen

TGFBI, also named as BIGH3, Kerato-epithelin and RGD-CAP, binds to type I, II, and IV collagens. TGFBI is an adhesion protein which may play an important role in cell-collagen interactions. In cartilage, it may be involved in endochondral bone formation. TGFBI is an extracellular matrix adaptor protein, it has been reported to be differentially expressed in transformed tissues. TGFBI is a predictive factor of the response to chemotherapy, and suggest the use of TGFBI-derived peptides as possible therapeutic adjuvants for the enhancement of responses to chemotherapy. (PMID:20509890) Defects in TGFBI are the cause of epithelial basement membrane corneal dystrophy (EBMD). Defects in TGFBI are the cause of corneal dystrophy Groenouw type 1 (CDGG1). Defects in TGFBI are the cause of corneal dystrophy lattice type 1 (CDL1). Defects in TGFBI are the cause of corneal dystrophy Thiel-Behnke type (CDTB). Defects in TGFBI are the cause of Reis-Buecklers corneal dystrophy (CDRB). Defects in TGFBI are the cause of lattice corneal dystrophy type 3A (CDL3A). Defects in TGFBI are the cause of Avellino corneal dystrophy (ACD).

## Bemerkenswerte Veröffentlichungen

Verfasser	Pubmed ID	Journal	Anwendung
Laura S M Lecker	34561272	Cancer Res	WB,IHC
Tianhong Pan	29190493	Neoplasia	WB,IHC
Douglas S Annis	26273833	PLoS One	WB

## Lagerung

Lagerungsbedingungen:

Bei -20°C lagern. Nach dem Versand ein Jahr lang stabil

Lagerungspuffer:

PBS with 0.1% sodium azide and 50% glycerol pH 7.3.

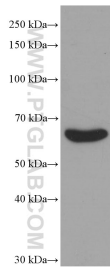
Aliquotieren ist nicht notwendig bei -20°C Lagerung

\*\*\* 20ul-Größen enthalten 0.1% BSA

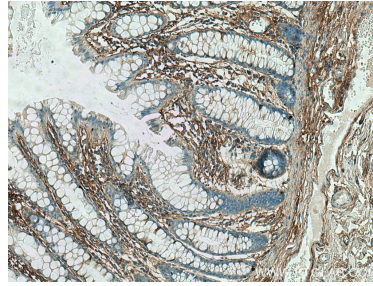
For technical support and original validation data for this product please contact:  
T: 1 (888) 4PTGLAB (1-888-478-4522) (toll free in USA), or 1(312) 455-8498 (outside USA)  
E: proteintech@ptglab.com  
W: ptglab.com

This product is exclusively available under Proteintech Group brand and is not available to purchase from any other manufacturer.

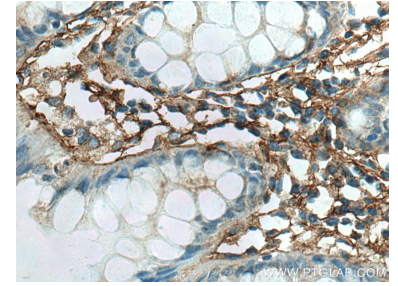
## Ausgewählte Validierungsdaten



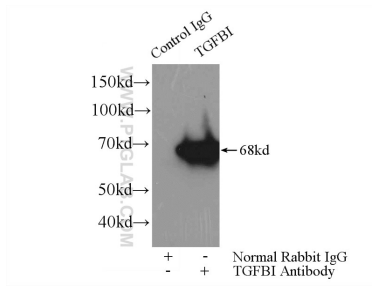
human kidney tissue were subjected to SDS PAGE followed by western blot with 60007-1-Ig (TGFB1 / BIGH3 antibody) at dilution of 1:1000 incubated at room temperature for 1.5 hours.



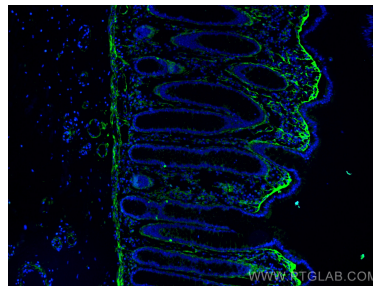
Immunohistochemical analysis of paraffin-embedded human colon tissue slide using 60007-1-Ig (TGFB1 / BIGH3 antibody) at dilution of 1:1000 (under 10x lens). Heat mediated antigen retrieval with Tris-EDTA buffer (pH 9.0).



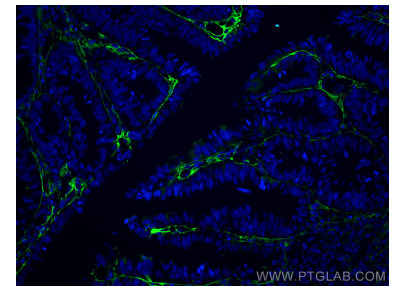
Immunohistochemical analysis of paraffin-embedded human colon tissue slide using 60007-1-Ig (TGFB1 / BIGH3 antibody) at dilution of 1:1000 (under 40x lens). Heat mediated antigen retrieval with Tris-EDTA buffer (pH 9.0).



IP Result of anti-TGFB1 / BIGH3 (IP:60007-1-Ig, 4ug; Detection:60007-1-Ig 1:300) with HeLa cells lysate 1200ug.



Immunofluorescent analysis of (4% PFA) fixed human colon cancer tissue using TGFB1 / BIGH3 antibody (60007-1-Ig, Clone: 3E11D11) at dilution of 1:400 and CoraLite®488-Conjugated AffiniPure Goat Anti-Mouse IgG(H+L).



Immunofluorescent analysis of (4% PFA) fixed human colon cancer tissue using TGFB1 / BIGH3 antibody (60007-1-Ig, Clone: 3E11D11) at dilution of 1:400 and CoraLite®488-Conjugated AffiniPure Goat Anti-Mouse IgG(H+L).