

Nur für Forschungszwecke

Beta Actin Monoklonaler Antikörper

Katalog-Nr.: 60008-1-Ig **2833 Publikationen**



Allgemeine Informationen

Katalog-Nr.: 60008-1-Ig	GenBank-Zugangsnummer: BC002409	Reinigungsmethode: Caprylsäure/Ammoniumsulfat-Präzipitation
Größe: 150ul, Konzentration: 1000 µg/ml von 60 Nanodrop und 1000 µg/ml durch die Bradford-Methode mit BSA als Standard;	GeneID (NCBI): actin, beta	CloneNo.: 7D2C10
Wirt: Maus	Vollständiger Name: actin, beta	Empfohlene Verdünnungen: WB 1:5000-1:50000 IHC 1:50-1:500
Isotyp: IgM	Berechnete Masse: 375 aa, 42 kDa	
Immunogen Katalognummer: AG0297	Beobachtete Masse: 42 kDa	

Anwendungen

Geprüfte Anwendungen: FC, IHC, WB, ELISA	Positivkontrollen: WB: Multizellen/-gewebe, A549-Zellen, Arabidopsis-Gewebe (aus der gesamten Pflanze), HEK-293-Zellen, HeLa-Zellen, MCF-7-Zellen, Reisgewebe (aus der gesamten Pflanze) IHC: humanes Kolongewebe, humanes Eierstockgewebe, humanes Herzgewebe, humanes Hirngewebe, humanes Hodengewebe, humanes Lungengewebe, humanes Milzgewebe, humanes Nierengewebe, humanes Plazenta-Gewebe
In Publikationen genannte Anwendungen: CoIP, IF, IHC, IP, WB	
Getestete Reaktivität: Human, Maus, Pflanze, Ratte, Zebrafisch	
Zitierte Arten: Arabidopsis, Caenorhabditis Elegans, Ente, Huhn, Hund, Ziege	
Hinweis-IHC: Antigendemaskierung mit TE-Puffer pH 9,0 empfohlen. (*) Wahlweise kann die Antigendemaskierung auch mit Citratpuffer pH 6,0 erfolgen.	

Hintergrundinformationen

Beta actin, also named as ACTB and F-Actin, belongs to the actin family. Actins are highly conserved globular proteins that are involved in various types of cell motility and are ubiquitously expressed in all eukaryotic cells. At least six isoforms of actins are known in mammals and other vertebrates: alpha (ACTC1, cardiac muscle 1), alpha 1 (ACTA1, skeletal muscle) and 2 (ACTA2, aortic smooth muscle), beta (ACTB), gamma 1 (ACTG1) and 2 (ACTG2, enteric smooth muscle). Beta and gamma 1 are two non-muscle actin proteins. Most actins consist of 376aa, while ACTG2 (rich in muscles) has 375aa and ACTG1(found in non-muscle cells) has only 374aa. Beta actin has been widely used as the internal control in RT-PCR and Western Blotting as a 42-kDa protein. However, the 37-40 kDa cleaved fragment of beta actin can be generated during apoptosis process. This antibody can recognize all the actins.

Bemerkenswerte Veröffentlichungen

Verfasser	Pubmed ID	Journal	Anwendung
Qiaoxia Zheng	36198318	Cell	WB
Menghui Xu	36290677	Antioxidants (Basel)	WB
BreAnna Cameron	34590699	Biol Open	WB

Lagerung

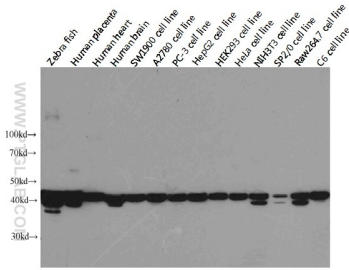
Lagerungsbedingungen:
Bei -20°C lagern. Nach dem Versand ein Jahr lang stabil
Lagerungspuffer:
PBS mit 0.02% Natriumazid und 50% Glycerin pH 7.3.
Aliquotieren ist nicht notwendig bei -20°C Lagerung

***** 20ul-Größen enthalten 0.1% BSA**

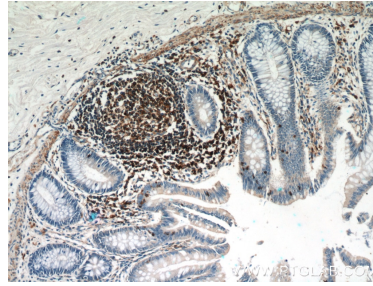
For technical support and original validation data for this product please contact:
T: 1 (888) 4PTGLAB (1-888-478-4522) (toll free in USA), or 1(312) 455-8498 (outside USA)
E: proteintech@ptglab.com
W: ptglab.com

This product is exclusively available under Proteintech Group brand and is not available to purchase from any other manufacturer.

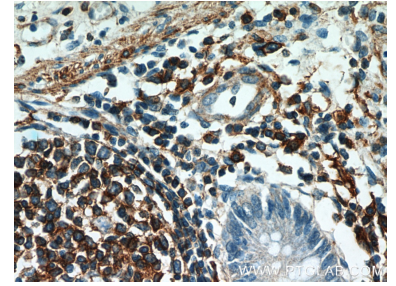
Ausgewählte Validierungsdaten



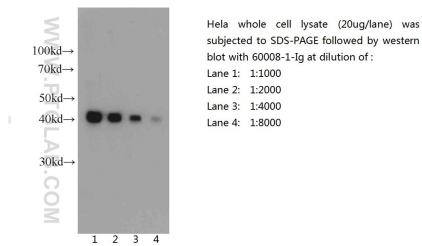
Western blot analysis of Beta-actin in various tissues and cell lines using Proteintech antibody 60008-1-Ig at a dilution of 1:5000. Extra bands were detected in some species with unknown reason.



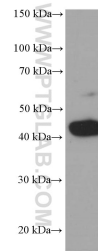
Immunohistochemical analysis of paraffin-embedded human colon using 60008-1-Ig(ActB antibody) at dilution of 1:50 (under 10x lens).



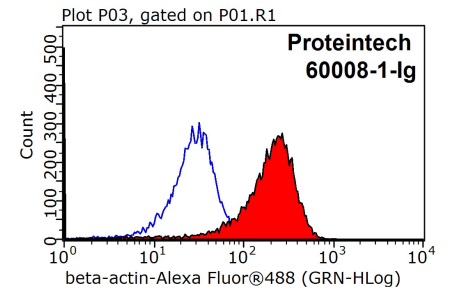
Immunohistochemical analysis of paraffin-embedded human colon using 60008-1-Ig(ActB antibody) at dilution of 1:50 (under 40x lens).



Western blot of HeLa cell with anti-Actin-Beta (60008-1-Ig) at various dilutions.



arabidopsis whole plant tissue were subjected to SDS PAGE followed by western blot with 60008-1-Ig (beta actin Antibody) at dilution of 1:2000 incubated at room temperature for 1.5 hours.



1X10⁶ HepG2 cells were stained with 0.2ug beta actin antibody (60008-1-Ig, red) and control antibody (blue). Fixed with 90% MeOH blocked with 3% BSA (30 min). Alexa Fluor 488-conjugated AffiniPure Goat Anti-Mouse IgG(H+L) with dilution 1:1000.