

Nur für Forschungszwecke

# S100A11 Monoklonaler Antikörper

Katalog-Nr.:60024-1-Ig

Vorgestelltes Produkt

5 Publikationen



## Allgemeine Informationen

<b>Katalog-Nr.:</b> 60024-1-Ig	<b>GenBank-Zugangsnummer:</b> BC001410	<b>Reinigungsmethode:</b> Protein-G-Reinigung
<b>Größe:</b> 150ul , Konzentration: 1600 µg/ml von6282 Nanodrop und 1000 µg/ml durch die Bradford-Methode mit BSA als Standard;	<b>GeneID (NCBI):</b> 150000000	<b>CloneNo.:</b> 1A3F1
<b>Wirt:</b> Maus	<b>Vollständiger Name:</b> S100 calcium binding protein A11	<b>Empfohlene Verdünnungen:</b> WB 1:1000-1:3000 IHC 1:500-1:1000 IF 1:400-1:1600
<b>Isotyp:</b> IgG1	<b>Berechnete Masse:</b> 105 aa, 12 kDa	
<b>Immunogen Katalognummer:</b> AG0343	<b>Beobachtete Masse:</b> 12 kDa	

## Anwendungen

<b>Geprüfte Anwendungen:</b> IF, IHC, WB, ELISA	<b>Positivkontrollen:</b> <b>WB :</b> T-47D-Zellen, A431-Zellen, BxPC-3-Zellen, DU 145-Zellen <b>IHC :</b> humanes Lungenkarzinomgewebe, humanes Ovarialkarzinomgewebe, humanes Schilddrüsenkarzinomgewebe <b>IF :</b> BxPC-3-Zellen,
<b>In Publikationen genannte Anwendungen:</b> IF, WB	
<b>Getestete Reaktivität:</b> Human	
<b>Zitierte Arten:</b> Human, Maus	
<b>Hinweis-IHC: Antigenmaskierung mit TE- Puffer pH 9,0 empfohlen. (*) Wahlweise kann die Antigenmaskierung auch mit Citratpuffer pH 6,0 erfolgen.</b>	

## Hintergrundinformationen

S100A11, also named as MLN 70, Calgizzarin and S100C, belongs to the S-100 family. It facilitates the differentiation and the cornification of keratinocytes. The naming of S100A11 systematically arises from its membership of the S100 protein family, named after their solubility in 100% saturated ammonium sulfate solution. First discovered in 1989, S100A11 has since been proposed to have direct biological functions in an assortment of physiological processes such as endo- and exocytosis, regulation of enzyme activity, cell growth and regulation, apoptosis and inflammation.

## Bemerkenswerte Veröffentlichungen

Verfasser	Pubmed ID	Journal	Anwendung
Maria Fankhaenel	36631478	Nat Commun	IF
Zhong Xian	37062136	Phytomedicine	WB
Weeraphan Churat C	22967555	Talanta	WB

## Lagerung

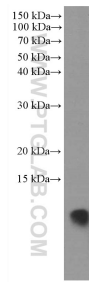
**Lagerungsbedingungen:**  
Bei -20°C lagern. Nach dem Versand ein Jahr lang stabil  
**Lagerungspuffer:**  
PBS mit 0.02% Natriumazid und 50% Glycerin pH 7.3.  
Aliquotieren ist nicht notwendig bei -20°C Lagerung

\*\*\* 20ul-Größen enthalten 0.1% BSA

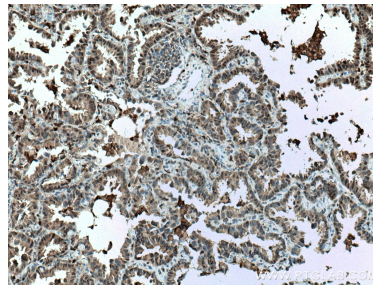
For technical support and original validation data for this product please contact:  
T: 1 (888) 4PTGLAB (1-888-478-4522) (toll free in USA), or 1(312) 455-8498 (outside USA)  
E: proteintech@ptglab.com  
W: ptglab.com

This product is exclusively available under Proteintech Group brand and is not available to purchase from any other manufacturer.

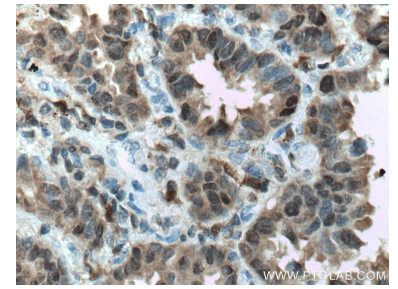
## Ausgewählte Validierungsdaten



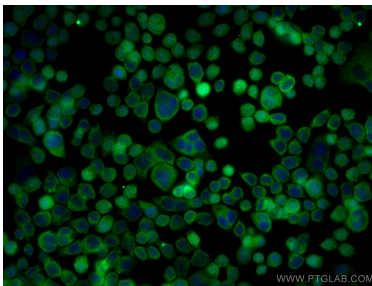
T-47D cells were subjected to SDS PAGE followed by western blot with 60024-1-Ig (S100A11 antibody) at dilution of 1:2000 incubated at room temperature for 1.5 hours.



Immunohistochemical analysis of paraffin-embedded human lung cancer tissue slide using 60024-1-Ig (S100A11 antibody) at dilution of 1:1000 (under 10x lens. Heat mediated antigen retrieval with Tris-EDTA buffer (pH 9.0).



Immunohistochemical analysis of paraffin-embedded human lung cancer tissue slide using 60024-1-Ig (S100A11 antibody) at dilution of 1:1000 (under 40x lens. Heat mediated antigen retrieval with Tris-EDTA buffer (pH 9.0).



Immunofluorescent analysis of (4% PFA) fixed BxPC-3 cells using S100A11 antibody (60024-1-Ig, Clone: 1A3F1 ) at dilution of 1:800 and CoraLite®488-Conjugated AffiniPure Goat Anti-Mouse IgG(H+L).