

## Allgemeine Informationen

<b>Katalog-Nr.:</b> 60027-1-Ig	<b>GenBank-Zugangsnummer:</b> BC002930	<b>Reinigungsmethode:</b> Thiophiler Affinitätschromatograph
<b>Größe:</b> 150ul , Konzentration: 500 µg/ml durch die Bradford-Methode mit BSA als Standard;	<b>GeneID (NCBI):</b> 9817	<b>CloneNo.:</b> 4G10H9
<b>Wirt:</b> Maus	<b>Vollständiger Name:</b> kelch-like ECH-associated protein 1	<b>Empfohlene Verdünnungen:</b> WB 1:1000-1:4000 IHC 1:50-1:500 IF 1:200-1:800
<b>Isotyp:</b> IgA	<b>Berechnete Masse:</b> 624 aa, 70 kDa	
<b>Immunogen Katalognummer:</b> AG0779	<b>Beobachtete Masse:</b> 60-70 kDa	

## Anwendungen

### Geprüfte Anwendungen:

IF, IHC, WB, ELISA

### In Publikationen genannte Anwendungen:

IF, IHC, IP, WB

### Getestete Reaktivität:

Human, Maus, Ratte

### Zitierte Arten:

Hausschwein, Huhn, Human, Maus, Ratte

**Hinweis-IHC: Antigendemaskierung mit TE-Puffer pH 9,0 empfohlen. (\*) Wahlweise kann die Antigendemaskierung auch mit Citratpuffer pH 6,0 erfolgen.**

### Positivkontrollen:

WB : 4T1-Zellen, HeLa-Zellen, Jurkat-Zellen, MCF-7-Zellen, NIH/3T3-Zellen

IHC : humanes Pankreaskarzinomgewebe, humanes Nierengewebe, humanes Skelettmuskelgewebe

IF : HeLa-Zellen,

## Hintergrundinformationen

KEAP1, also named as INRF2, KIAA0132 and KLHL19, is part of a multiprotein complex that contains the CUL3-ROC1 ubiquitin ligase, which can ubiquitinate the N-terminal domain of NRF2. Two molecules of KEAP1 bind to two distinct sites in the N-terminal region of NRF2, the ETGE and DLG sites, which affect the KEAP1-NRF2 interaction and/or its physiological consequences. KEAP1 retains NFE2L2/NRF2 in the cytosol. It functions as substrate adapter protein for the E3 ubiquitin ligase complex formed by CUL3 and RBX1. It also retains BPTF in the cytosol. This antibody is a mouse monoclonal antibody raised against residues near the C terminus of human KEAP1.

## Bemerkenswerte Veröffentlichungen

Verfasser	Pubmed ID	Journal	Anwendung
Jinliang Liu	34630847	Oxid Med Cell Longev	WB
Lei Zhao	34582963	Food Chem Toxicol	WB
Yue Li	36234847	Molecules	WB

## Lagerung

### Lagerungsbedingungen:

Bei -20°C lagern. Nach dem Versand ein Jahr lang stabil

### Lagerungspuffer:

PBS with 0.1% sodium azide and 50% glycerol pH 7.3.

Aliquotieren ist nicht notwendig bei -20°C Lagerung

**\*\*\* 20ul-Größen enthalten 0.1% BSA**

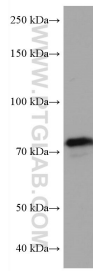
For technical support and original validation data for this product please contact:

T: 1 (888) 4PTGLAB (1-888-478-4522) (toll free in USA), or 1(312) 455-8498 (outside USA)

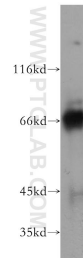
E: [proteintech@ptglab.com](mailto:proteintech@ptglab.com)  
W: [ptglab.com](http://ptglab.com)

**This product is exclusively available under Proteintech Group brand and is not available to purchase from any other manufacturer.**

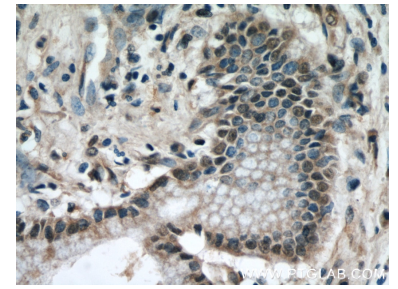
## Ausgewählte Validierungsdaten



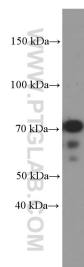
4T1 cells were subjected to SDS PAGE followed by western blot with 60027-1-Ig (KEAP1 antibody) at dilution of 1:2000 incubated at room temperature for 1.5 hours.



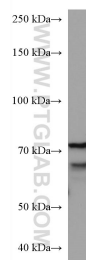
HeLa cells were subjected to SDS PAGE followed by western blot with 60027-1-Ig (KEAP1 antibody) at dilution of 1:400 incubated at room temperature for 1.5 hours.



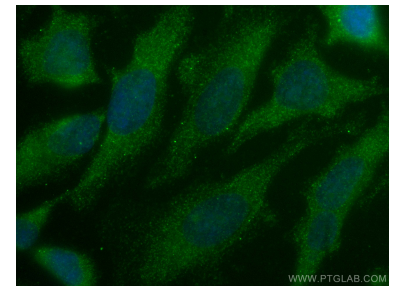
Immunohistochemical analysis of paraffin-embedded human pancreas cancer using 60027-1-Ig(KEAP1 antibody) at dilution of 1:50 (under 40x lens).



MCF-7 cells were subjected to SDS PAGE followed by western blot with 60027-1-Ig (KEAP1 Antibody) at dilution of 1:1000 incubated at room temperature for 1.5 hours.



Jurkat cells were subjected to SDS PAGE followed by western blot with 60027-1-Ig (KEAP1 antibody) at dilution of 1:2000 incubated at room temperature for 1.5 hours.



Immunofluorescent analysis of (-20°C Ethanol) fixed HeLa cells using KEAP1 antibody (60027-1-Ig, Clone: 4G10H9) at dilution of 1:400 and CoraLite@488-Conjugated AffiniPure Goat Anti-Mouse IgG(H+L).