

## Allgemeine Informationen

<b>Katalog-Nr.:</b> 60028-1-Ig	<b>GenBank-Zugangsnummer:</b> BC004375	<b>Reinigungsmethode:</b> Protein-G-Reinigung
<b>Größe:</b> 150ul , Konzentration: 2600 µg/ml von1718 Nanodrop und 1080 µg/ml durch die Bradford-Methode mit BSA als Standard;	<b>GeneID (NCBI):</b> 24-dehydrocholesterol reductase	<b>CloneNo.:</b> 2F6E11
<b>Wirt:</b> Maus	<b>Berechnete Masse:</b> 60 kDa, 516 aa	<b>Empfohlene Verdünnungen:</b> WB 1:1000-1:4000 IHC 1:50-1:500
<b>Isotyp:</b> IgG1	<b>Beobachtete Masse:</b> 60 kDa	
<b>Immunogen Katalognummer:</b> AG0756		

## Anwendungen

<b>Geprüfte Anwendungen:</b> IHC, WB, ELISA	<b>Positivkontrollen:</b> WB : HEK-293-Zellen, HepG2-Zellen, MCF-7-Zellen IHC : humanes Prostatakarzinomgewebe,
<b>Getestete Reaktivität:</b> Human	
<b>Hinweis-IHC: Antigenmaskierung mit TE-Puffer pH 9,0 empfohlen. (*) Wahlweise kann die Antigenmaskierung auch mit Citratpuffer pH 6,0 erfolgen.</b>	

## Hintergrundinformationen

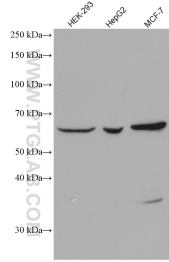
DHCR24(3-beta-hydroxysterol delta-24-reductase), also named as Seladin-1 or Diminuto/dwarf1 homolog, is a member of the flavin adenine dinucleotide (FAD)-dependent oxidoreductases, and catalyzes the reduction of the delta-24 double bond of sterol intermediates during cholesterol biosynthesis. The dhcr24 expression was shown to be down regulated in brain areas affected by Alzheimer's disease and endogenous DHCR24/seladin-1 levels are highly up-regulated upon acute oxidative stress while expression declines to very low levels upon chronic exposure (PMID:17984220). In apoptotic cells, endogenous seladin-1 was cleaved to a 40 kDa derivative in a caspase-dependent manner (PMID: 11007892).

## Lagerung

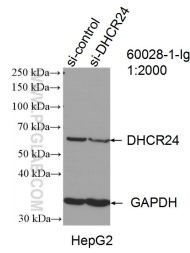
**Lagerungsbedingungen:**  
Bei -20°C lagern. Nach dem Versand ein Jahr lang stabil  
**Lagerungspuffer:**  
PBS with 0.1% sodium azide and 50% glycerol pH 7.3.  
**Aliquotieren ist nicht notwendig bei -20°C Lagerung**

\*\*\* 20ul-Größen enthalten 0.1% BSA

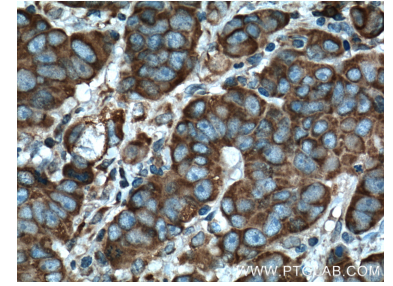
## Ausgewählte Validierungsdaten



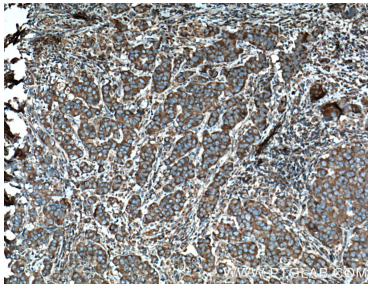
Various lysates were subjected to SDS PAGE followed by western blot with 60028-1-Ig (DHCR24 antibody) at dilution of 1:2000 incubated at room temperature for 1.5 hours.



WB result of DHCR24 antibody (60028-1-Ig; 1:2000; incubated at room temperature for 1.5 hours) with sh-Control and sh-DHCR24 transfected HepG2 cells.



Immunohistochemical analysis of paraffin-embedded human prostate cancer tissue slide using 60028-1-Ig (DHCR24 Antibody) at dilution of 1:200 (under 40x lens). Heat mediated antigen retrieval with Tris-EDTA buffer (pH 9.0).



Immunohistochemical analysis of paraffin-embedded human prostate cancer tissue slide using 60028-1-Ig (DHCR24 Antibody) at dilution of 1:200 (under 10x lens). Heat mediated antigen retrieval with Tris-EDTA buffer (pH 9.0).