

Nur für Forschungszwecke

# FKBPL Monoklonaler Antikörper

Katalog-Nr.:60030-1-Ig



## Allgemeine Informationen

<b>Katalog-Nr.:</b> 60030-1-Ig	<b>GenBank-Zugangsnummer:</b> BC004168	<b>Reinigungsmethode:</b> Protein-G-Reinigung
<b>Größe:</b> 150ul , Konzentration: 1000 µg/ml durch die Bradford-Methode mit BSA als Standard;	<b>GeneID (NCBI):</b> 63943	<b>CloneNo.:</b> 5D9A9
<b>Wirt:</b> Maus	<b>Vollständiger Name:</b> FK506 binding protein like	<b>Empfohlene Verdünnungen:</b> WB 1:200-1:1000
<b>Isotyp:</b> IgG1	<b>Berechnete Masse:</b> 349 aa, 38 kDa	
<b>Immunogen Katalognummer:</b> AG0112	<b>Beobachtete Masse:</b> 42-48 kDa	

## Anwendungen

<b>Geprüfte Anwendungen:</b> WB,ELISA	<b>Positivkontrollen:</b> WB : Maus-Eierstockgewebe,
<b>Getestete Reaktivität:</b> Human, Maus	

## Hintergrundinformationen

FKBPL, also named as DIR1, NG7 and WISp39, has similarity to the immunophilin protein family, which plays a role in immunoregulation and basic cellular processes involving protein folding and trafficking. This protein is thought to have a potential role in the induced radioresistance, probably by increasing the rate of DNA repair in cells exposed to X rays. Also it appears to have some involvement in general stress response in the control of the cell cycle. It regulates p21 protein stability by binding to Hsp90 and p21. FKBPL is an estrogen-inducible gene that acts as a cochaperone in ERα/Hsp90 molecular complexes; furthermore, FKBPL levels may be both a prognostic indicator and determinant of response to endocrine therapy. (PMID:20103631, 15664193)

## Lagerung

**Lagerungsbedingungen:**  
Bei -20°C lagern. Nach dem Versand ein Jahr lang stabil  
**Lagerungspuffer:**  
PBS with 0.1% sodium azide and 50% glycerol pH 7.3.  
Aliquotieren ist nicht notwendig bei -20°C Lagerung

**\*\*\* 20ul-Größen enthalten 0.1% BSA**

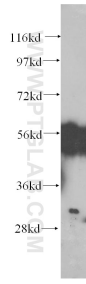
For technical support and original validation data for this product please contact:

T: 1 (888) 4PTGLAB (1-888-478-4522) (toll free  
in USA), or 1(312) 455-8498 (outside USA)

E: proteintech@ptglab.com  
W: ptglab.com

**This product is exclusively available under Proteintech Group brand and is not available to purchase from any other manufacturer.**

## Ausgewählte Validierungsdaten



mouse ovary tissue were subjected to SDS PAGE followed by western blot with 60030-1-Ig (FKBPL antibody) at dilution of 1:300 incubated at room temperature for 1.5 hours.