

Nur für Forschungszwecke

# MME,CD10 Monoklonaler Antikörper



Katalog-Nr.:60034-3-Ig

Vorgestelltes Produkt

## Allgemeine Informationen

Katalog-Nr.:

60034-3-Ig

Größe:

150ul, Konzentration: 2400 µg/ml von4311

Nanodrop und 1453 µg/ml durch die Bradford-Methode mit BSA als Standard;

Wirt:

Maus

Isotyp:

IgG1

Immunogen Katalognummer:

AG0427

GenBank-Zugangsnummer:

BC101658

GeneID (NCBI):

4311

Vollständiger Name:

membrane metallo-endopeptidase

Berechnete Masse:

750 aa, 86 kDa

Beobachtete Masse:

100 kDa

Reinigungsmethode:

Protein-A-Reinigung

CloneNo.:

4B9D9

Empfohlene Verdünnungen:

WB 1:500-1:2000

IHC 1:100-1:400

## Anwendungen

Geprüfte Anwendungen:

FC, IHC, WB, ELISA

Getestete Reaktivität:

Hausschwein, Human, Maus

**Hinweis-IHC: Antigendemaskierung mit TE-Puffer pH 9,0 empfohlen. (\*) Wahlweise kann die Antigendemaskierung auch mit Citratpuffer pH 6,0 erfolgen.**

Positivkontrollen:

WB : Hausschwein-Nierengewebe, HEK-293-Zellen, Mausnierengewebe

IHC : humanes Nierenzellkarzinomgewebe, humanes Nierengewebe, humanes Tonsillengewebe, Mausebergewebe, Mausnierengewebe

## Hintergrundinformationen

MME is also names as neprilysin,CALLA,NEP,SFE,CD10 and belongs to the peptidase M13 family.It is a glycoprotein that is particularly abundant in kidney, where it is present on the brush border of proximal tubules and on glomerular epithelium.CD10 has been considered a useful marker in the diagnosis of renal carcinomas, because of its expression in clear cell and papillary renal cell carcinomas and its absence in chromophobe renal cell carcinomas(PMID:15286660).

## Lagerung

Lagerungsbedingungen:

Bei -20°C lagern. Nach dem Versand ein Jahr lang stabil

Lagerungspuffer:

PBS mit 0.02% Natriumazid und 50% Glycerin pH 7.3.

Aliquotieren ist nicht notwendig bei -20°C Lagerung

\*\*\* 20ul-Größen enthalten 0.1% BSA

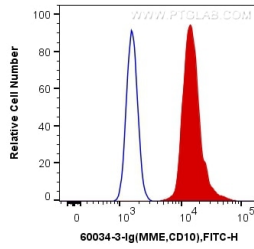
For technical support and original validation data for this product please contact:

T: 1 (888) 4PTGLAB (1-888-478-4522) (toll free in USA), or 1(312) 455-8498 (outside USA)

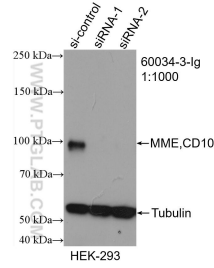
E: proteintech@ptglab.com  
W: ptglab.com

This product is exclusively available under Proteintech Group brand and is not available to purchase from any other manufacturer.

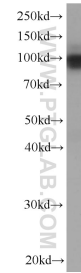
## Ausgewählte Validierungsdaten



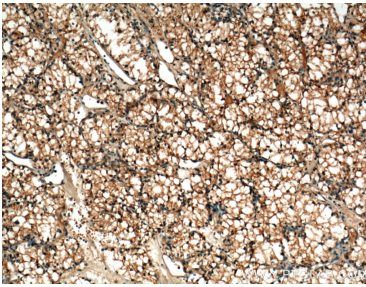
1X10<sup>6</sup> Ramos cells were intracellularly stained with 0.2 ug Anti-Human MME,CD10 (60034-3-Ig, Clone:4B9D9) and CoraLite®488-Conjugated AffiniPure Goat Anti-Mouse IgG(H+L) at dilution 1:1000 (red), or 0.2 ug Control Antibody. Cells were fixed with 4% PFA and permeabilized with Flow Cytometry Perm Buffer (PF00011-C).



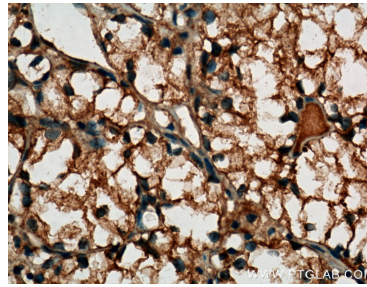
WB result of MME,CD10 antibody (60034-3-Ig; 1:1000; incubated at room temperature for 1.5 hours) with sh-Control and sh-MME,CD10 transfected HEK-293 cells.



pig kidney tissue were subjected to SDS PAGE followed by western blot with 60034-3-Ig (MME,CD10 Antibody) at dilution of 1:1000 incubated at room temperature for 1.5 hours.



Immunohistochemical analysis of paraffin-embedded human renal cell carcinoma tissue slide using 60034-3-Ig (MME,CD10 Antibody) at dilution of 1:400 (under 10x lens). Heat mediated antigen retrieval with Tris-EDTA buffer (pH 9.0).



Immunohistochemical analysis of paraffin-embedded human renal cell carcinoma tissue slide using 60034-3-Ig (MME,CD10 Antibody) at dilution of 1:400 (under 40x lens). Heat mediated antigen retrieval with Tris-EDTA buffer (pH 9.0).