

## Allgemeine Informationen

Katalog-Nr.:  
60038-1-Ig

Größe:  
150ul , Konzentration: 1000 µg/ml  
durch die Bradford-Methode mit BSA  
als Standard;

Wirt:  
Maus

Isotyp:  
IgG1

Immunogen Katalognummer:  
AG0346

GenBank-Zugangsnummer:  
BC002582

GeneID (NCBI):  
7337

Vollständiger Name:  
ubiquitin protein ligase E3A

Berechnete Masse:  
852 aa, 98 kDa

Beobachtete Masse:  
100 kDa

Reinigungsmethode:

Caprylsäure/Ammoniumsulfat-  
Präzipitation

CloneNo.:  
3D6H9

Empfohlene Verdünnungen:  
WB 1:200-1:1000  
IHC 1:20-1:400

## Anwendungen

Geprüfte Anwendungen:  
IHC, WB,ELISA

Getestete Reaktivität:  
Human, Maus

**Hinweis-IHC: Antigendemaskierung mit TE-  
Puffer pH 9,0 empfohlen. (\*) Wahlweise  
kann die Antigendemaskierung auch mit  
Citratpuffer pH 6,0 erfolgen.**

Positivkontrollen:

WB : HeLa-Zellen,

IHC : humanes Nierengewebe,

## Hintergrundinformationen

UBE3A(Ubiquitin-protein ligase E3A) is also named as E6AP, EPVE6AP, HPVE6A and belongs to the E3 ubiquitin protein ligase family. It functions as both an E3 ligase in the ubiquitin proteasome pathway and as a transcriptional coactivator. It is also initially identified as a cellular protein that mediates in vitro association of the human papillomavirus E6 protein with p53, leading to the ubiquitin-dependent degradation of p53(PMID:1661671). Defects in UBE3A are a cause of Angelman syndrome (AS)(PMID:10508479). It has 3 isoforms produced by alternative splicing.

## Lagerung

Lagerungsbedingungen:

Bei -20°C lagern. Nach dem Versand ein Jahr lang stabil

Lagerungspuffer:

PBS with 0.1% sodium azide and 50% glycerol pH 7.3.

Aliquotieren ist nicht notwendig bei -20°C Lagerung

**\*\*\* 20ul-Größen enthalten 0.1% BSA**

For technical support and original validation data for this product please contact:

T: 1 (888) 4PTGLAB (1-888-478-4522) (toll free  
in USA), or 1(312) 455-8498 (outside USA)

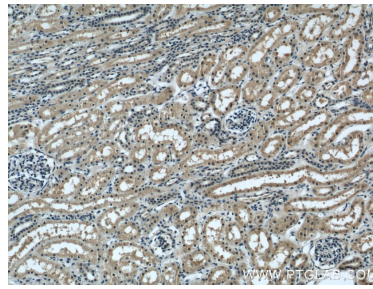
E: proteintech@ptglab.com  
W: ptglab.com

**This product is exclusively available under Proteintech  
Group brand and is not available to purchase from any  
other manufacturer.**

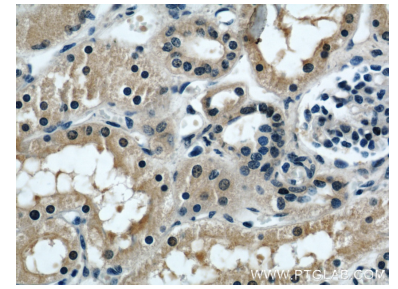
## Ausgewählte Validierungsdaten



HeLa cells were subjected to SDS PAGE followed by western blot with 60038-1-Ig (UBE3A antibody) at dilution of 1:300 incubated at room temperature for 1.5 hours.



Immunohistochemical analysis of paraffin-embedded human kidney using 60038-1-Ig(UBE3A antibody) at dilution of 1:50 (under 10x lens).



Immunohistochemical analysis of paraffin-embedded human kidney using 60038-1-Ig(UBE3A antibody) at dilution of 1:50 (under 40x lens).