

Nur für Forschungszwecke

PLOD3 Monoklonaler Antikörper

Katalog-Nr.:60058-1-Ig

Vorgestelltes Produkt

3 Publikationen



Allgemeine Informationen

Katalog-Nr.:
60058-1-Ig

Größe:
150ul, Konzentration: 2700 µg/ml von 8985
Nanodrop und 1600 µg/ml durch die
Bradford-Methode mit BSA als
Standard;

Wirt:
Maus

Isotyp:
IgG2a

Immunogen Katalognummer:
AG1480

GenBank-Zugangsnummer:
BC011674

GeneID (NCBI):

Vollständiger Name:
procollagen-lysine, 2-oxoglutarate 5-
dioxygenase 3

Berechnete Masse:
738 aa, 85 kDa

Beobachtete Masse:
80-85 kDa

Reinigungsmethode:
Protein-A-Reinigung

CloneNo.:
2G12B8

Empfohlene Verdünnungen:
WB 1:5000-1:50000
IP 0.5-4.0 µg für IP und 1:500-1:1000
für WB
IHC 1:20-1:200
IF 1:50-1:500

Anwendungen

Geprüfte Anwendungen:

IF, IHC, IP, WB, ELISA

In Publikationen genannte Anwendungen:

WB

Getestete Reaktivität:

Human

Zitierte Arten:

Human, Maus

**Hinweis-IHC: Antigenmaskierung mit TE-
Puffer pH 9,0 empfohlen. (*) Wahlweise
kann die Antigenmaskierung auch mit
Citratpuffer pH 6,0 erfolgen.**

Positivkontrollen:

WB : K-562-Zellen, 4T1-Zellen, A549-Zellen, HeLa-
Zellen, HepG2-Zellen, humanes Plazenta-Gewebe,
LNCaP-Zellen, NIH/3T3-Zellen, PC-3-Zellen

IP : HeLa-Zellen,

IHC : humanes Pankreaskarzinomgewebe,

IF : HeLa-Zellen,

Hintergrundinformationen

PLOD3, also named as LH3, forms hydroxylysine residues in -Xaa-Lys-Gly- sequences in collagens. These hydroxylysines serve as sites of attachment for carbohydrate units and are essential for the stability of the intermolecular collagen cross-links. The major function of PLOD3 in osteoblasts is to glucosylate galactosylhydroxylysine residues in type I collagen.

Bemerkenswerte Veröffentlichungen

Verfasser	Pubmed ID	Journal	Anwendung
Neus Bota-Rabasedas	33543040	Matrix Biol Plus	WB
Stephen A Watt	26380979	PLoS One	WB
Xiaochao Tan	34874914	JCI Insight	WB

Lagerung

Lagerungsbedingungen:

Bei -20°C lagern. Nach dem Versand ein Jahr lang stabil

Lagerungspuffer:

PBS with 0.1% sodium azide and 50% glycerol pH 7.3.

Aliquotieren ist nicht notwendig bei -20°C Lagerung

*** 20ul-Größen enthalten 0.1% BSA

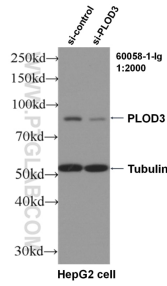
For technical support and original validation data for this product please contact:

T: 1 (888) 4PTGLAB (1-888-478-4522) (toll free
in USA), or 1(312) 455-8498 (outside USA)

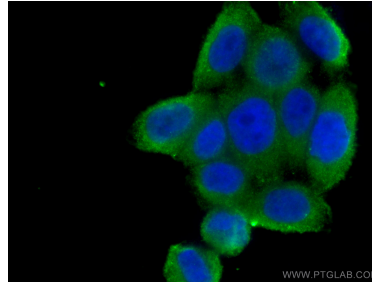
E: proteintech@ptglab.com
W: ptglab.com

This product is exclusively available under Proteintech Group brand and is not available to purchase from any other manufacturer.

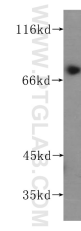
Ausgewählte Validierungsdaten



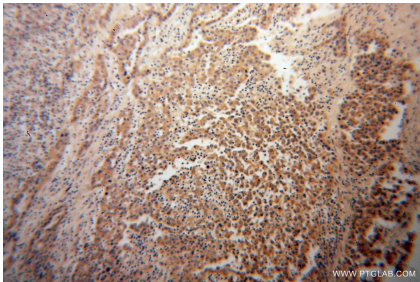
WB result of PLOD3 antibody (60058-1-Ig, 1:2000) with si-Control and si-PLOD3 transfected HepG2 cells.



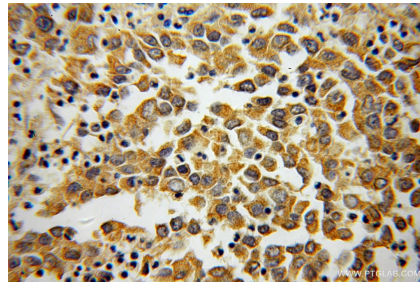
Immunofluorescent analysis of (-20°C Ethanol) fixed HeLa cells using 60058-1-Ig (PLOD3 antibody) at dilution of 1:100 and CoraLite488-Conjugated AffiniPure Goat Anti-Mouse IgG(H+L).



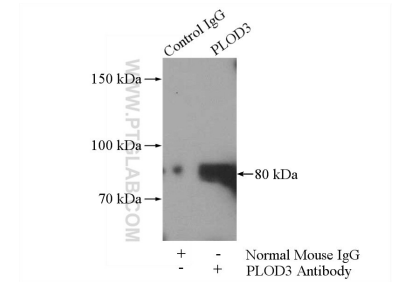
human placenta tissue were subjected to SDS PAGE followed by western blot with 60058-1-Ig (PLOD3 antibody) at dilution of 1:300 incubated at room temperature for 1.5 hours.



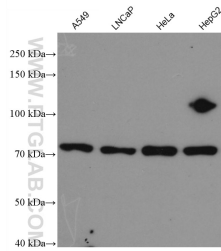
Immunohistochemical analysis of paraffin-embedded human pancreas cancer using 60058-1-Ig(PLOD3 antibody) at dilution of 1:100 (under 10x lens).



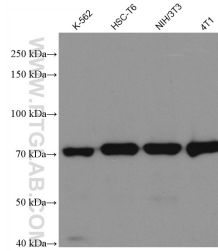
Immunohistochemical analysis of paraffin-embedded human pancreas cancer using 60058-1-Ig(PLOD3 antibody) at dilution of 1:100 (under 40x lens).



IP Result of anti-PLOD3 (IP:60058-1-Ig, 5ug; Detection:60058-1-Ig 1:500) with HeLa cells lysate 1400ug.



Various lysates were subjected to SDS PAGE followed by western blot with 60058-1-Ig (PLOD3 antibody) at dilution of 1:10000 incubated at room temperature for 1.5 hours.



Various lysates were subjected to SDS PAGE followed by western blot with 60058-1-Ig (PLOD3 antibody) at dilution of 1:10000 incubated at room temperature for 1.5 hours.