

## Allgemeine Informationen

<b>Katalog-Nr.:</b> 60061-1-Ig	<b>GenBank-Zugangsnummer:</b> BC002699	<b>Reinigungsmethode:</b> Caprylsäure/Ammoniumsulfat-Präzipitation
<b>Größe:</b> 150ul, Konzentration: 793 µg/ml durch die Bradford-Methode mit BSA als Standard;	<b>GeneID (NCBI):</b> 9474	<b>CloneNo.:</b> 3G6E6
<b>Wirt:</b> Maus	<b>Vollständiger Name:</b> ATG5 autophagy related 5 homolog (S. cerevisiae)	<b>Empfohlene Verdünnungen:</b> WB 1:500-1:2000 IHC 1:50-1:500 IF 1:50-1:500
<b>Isotyp:</b> IgM	<b>Berechnete Masse:</b> 32 kDa	
<b>Immunogen Katalognummer:</b> AG0214	<b>Beobachtete Masse:</b> 55 kDa	

## Anwendungen

<b>Geprüfte Anwendungen:</b> IF, IHC, WB, ELISA	<b>Positivkontrollen:</b> WB : K-562-Zellen, HeLa-Zellen
<b>In Publikationen genannte Anwendungen:</b> IF, IHC, WB	<b>IHC :</b> humanes Kolonkarzinomgewebe, <b>IF :</b> HeLa-Zellen,
<b>Getestete Reaktivität:</b> Human, Maus	
<b>Zitierte Arten:</b> Human, Maus	
<b>Hinweis-IHC: Antigendemaskierung mit TE-Puffer pH 9,0 empfohlen. (*) Wahlweise kann die Antigendemaskierung auch mit Citratpuffer pH 6,0 erfolgen.</b>	

## Hintergrundinformationen

ATG5, also named as APG5L and ASP, belongs to the ATG5 family. It is required for autophagy. It plays an important role in the apoptotic process, possibly within the modified cytoskeleton. Its expression is a relatively late event in the apoptotic process, occurring downstream of caspase activity. Autophagy is a catabolic process for the autophagosomic-lysosomal degradation of bulk cytoplasmic contents. Formation of the autophagosome involves a ubiquitin-like conjugation system in which Atg12 is covalently bound to Atg5 and targeted to autophagosome vesicles. It mediates autophagosome-independent host protection.

## Bemerkenswerte Veröffentlichungen

Verfasser	Pubmed ID	Journal	Anwendung
Shuo Wang	29039550	Mol. Med Rep	WB
Jingjing Zheng	34058434	Cells Dev	WB
Qian Huang	32677505	Autophagy	WB

## Lagerung

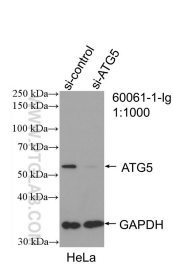
**Lagerungsbedingungen:**  
Bei -20°C lagern. Nach dem Versand ein Jahr lang stabil  
**Lagerungspuffer:**  
PBS mit 0.02% Natriumazid und 50% Glycerin pH 7.3.  
Aliquotieren ist nicht notwendig bei -20°C Lagerung

**\*\*\* 20ul-Größen enthalten 0.1% BSA**

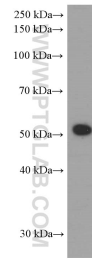
For technical support and original validation data for this product please contact:  
T: 1 (888) 4PTGLAB (1-888-478-4522) (toll free in USA), or 1(312) 455-8498 (outside USA)  
E: [proteintech@ptglab.com](mailto:proteintech@ptglab.com)  
W: [ptglab.com](http://ptglab.com)

**This product is exclusively available under Proteintech Group brand and is not available to purchase from any other manufacturer.**

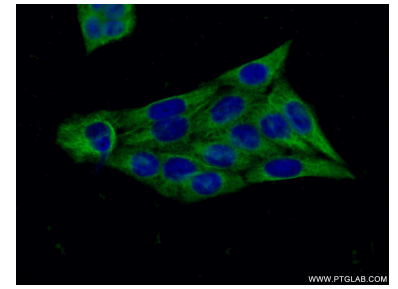
## Ausgewählte Validierungsdaten



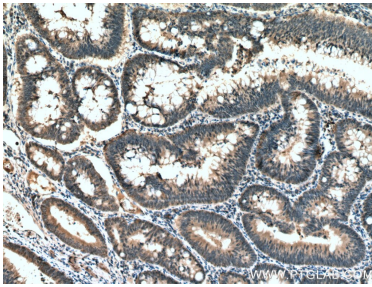
WB result of ATG5 antibody (60061-1-Ig; 1:1000; incubated at room temperature for 1.5 hours) with sh-Control and sh-ATG5 transfected HeLa cells.



K-562 cells were subjected to SDS PAGE followed by western blot with 60061-1-Ig (ATG5 Antibody) at dilution of 1:1000 incubated at room temperature for 1.5 hours.



Immunofluorescent analysis of (-20°C Ethanol ) fixed HeLa cells using 60061-1-Ig(ATG5 antibody) at dilution of 1:100 and Alexa Fluor 488-conjugated AffiniPure Goat Anti-Mouse IgG(H+L).



Immunohistochemical analysis of paraffin-embedded human colon cancer tissue slide using 60061-1-Ig (ATG5 antibody) at dilution of 1:200 (under 10x lens). Heat mediated antigen retrieval with Tris-EDTA buffer (pH 9.0).