

Nur für Forschungszwecke

Neuropilin 1 Monoklonaler Antikörper



Katalog-Nr.:60067-1-Ig **16 Publikationen**

Allgemeine Informationen

Katalog-Nr.: 60067-1-Ig	GenBank-Zugangsnummer: BC007737	Reinigungsmethode: Protein-A-Reinigung
Größe: 150ul , Konzentration: 1300 µg/ml von8829 Nanodrop und 1000 µg/ml durch die Bradford-Methode mit BSA als Standard;	GeneID (NCBI): neuropilin 1	CloneNo.: 2H3F6
Wirt: Maus	Vollständiger Name: neuropilin 1	Empfohlene Verdünnungen: WB 1:1000-1:6000 IF 1:50-1:500
Isotyp: IgG1	Berechnete Masse: 103 kDa	
Immunogen Katalognummer: AG0931	Beobachtete Masse: 130 kDa	

Anwendungen

Geprüfte Anwendungen: FC, IF, WB, ELISA	Positivkontrollen: WB : humanes Plazenta-Gewebe, A549-Zellen, fetales humanes Hirngewebe, Hausschwein-Herzgewebe, Hausschwein-Hirngewebe, HeLa-Zellen, Kaninchenherzgewebe, MDA-MB-231-Zellen
In Publikationen genannte Anwendungen: CoIP, IF, IP, WB	IF : SH-SY5Y-Zellen, humane embryonale Stammzellen
Getestete Reaktivität: Hausschwein, Human, Kaninchen	
Zitierte Arten: Human, Maus, Krallenfrosch (Xenopus)	

Hintergrundinformationen

Neuropilin-1 (NRP1) is a 130-140 kDa transmembrane glycoprotein expressed by endothelial, dendritic, and regulatory T cells, as well as several other normal cell types and malignant tumor cells. NRP1 was first identified as a semaphorin (SEMA) receptor, involved in axonal guidance in embryonic development. NRP1 was also shown to act as a receptor for vascular endothelial growth factor (VEGF) and a promoter of angiogenesis through its interaction with VEGF-A165 (and other VEGFs) and the receptor tyrosine kinase (RTK) VEGF-R2. NRP1 plays versatile roles in angiogenesis, axon guidance, cell survival, migration, and invasion.

Bemerkenswerte Veröffentlichungen

Verfasser	Pubmed ID	Journal	Anwendung
Chunxi Liu	25204970	Mol Cell Biochem	WB
Emmanuel Laplantine	36093378	iScience	WB
Max Koppers	31746735	Elife	IF

Lagerung

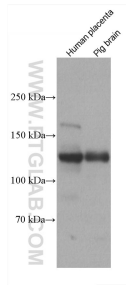
Lagerungsbedingungen:
Bei -20°C lagern. Nach dem Versand ein Jahr lang stabil
Lagerungspuffer:
PBS with 0.1% sodium azide and 50% glycerol pH 7.3.
Aliquotieren ist nicht notwendig bei -20°C Lagerung

***** 20ul-Größen enthalten 0.1% BSA**

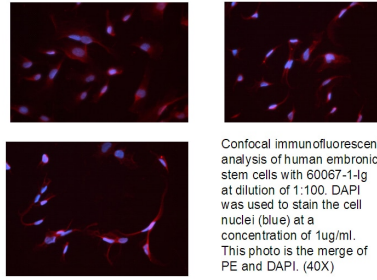
For technical support and original validation data for this product please contact:
T: 1 (888) 4PTGLAB (1-888-478-4522) (toll free in USA), or 1(312) 455-8498 (outside USA)
E: proteintech@ptglab.com
W: ptglab.com

This product is exclusively available under Proteintech Group brand and is not available to purchase from any other manufacturer.

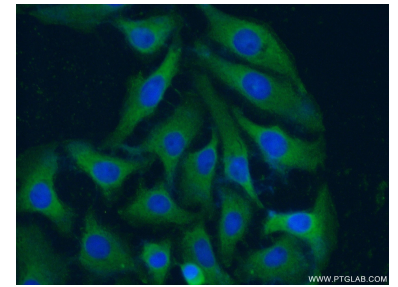
Ausgewählte Validierungsdaten



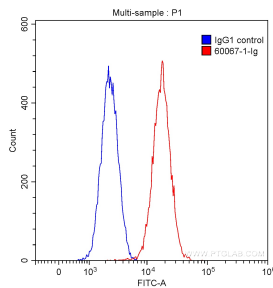
Various lysates were subjected to SDS PAGE followed by western blot with 60067-1-Ig (Neuropilin 1 antibody) at dilution of 1:3000 incubated at room temperature for 1.5 hours.



Confocal immunofluorescent analysis of human embryonic stem cells with 60067-1-Ig at dilution of 1:100. DAPI was used to stain the cell nuclei (blue) at a concentration of 1ug/ml. This photo is the merge of PE and DAPI. (40X)



Immunofluorescent analysis of (-20°C Ethanol) fixed SH-SY5Y cells using 60067-1-Ig(Neuropilin 1 antibody) at dilution of 1:100 and Alexa Fluor 488-conjugated AffiniPure Goat Anti-Mouse IgG(H+L).



1X10⁶ SH-SY5Y cells were stained with 0.20 ug/test Anti-Human Neuropilin 1 (60067-1-Ig, Clone:2H3F6) (red) or 0.20 ug control antibody (blue) and CoraLite@488-Conjugated AffiniPure Goat Anti-Mouse IgG(H+L) with dilution 1:1000. Fixed with 90% MeOH.