

Nur für Forschungszwecke

# SULT1A1 Monoklonaler Antikörper

Katalog-Nr.:60076-1-Ig

Vorgestelltes Produkt



## Allgemeine Informationen

Katalog-Nr.:

60076-1-Ig

Größe:

150ul, Konzentration: 2500 µg/ml von6817

Nanodrop und 1000 µg/ml durch die Bradford-Methode mit BSA als Standard;

Wirt:

Maus

Isotyp:

IgG2a

Immunogen Katalognummer:

AG4611

GenBank-Zugangsnummer:

BC000923

GeneID (NCBI):

6817

Vollständiger Name:

sulfotransferase family, cytosolic, 1A, WB 1:500-1:5000 phenol-preferring, member 1

Berechnete Masse:

34 kDa

Beobachtete Masse:

34 kDa

Reinigungsmethode:

Protein-A-Reinigung

CloneNo.:

10H6F6

Empfohlene Verdünnungen:

1:500-1:5000

## Anwendungen

Geprüfte Anwendungen:

WB, ELISA

Getestete Reaktivität:

Hausschwein, Human, Maus, Ratte

Positivkontrollen:

WB : Hausschwein-Hirngewebe, HEK-293-Zellen, HepG2-Zellen, humanes Lebergewebe, humanes Plazenta-Gewebe, Jurkat-Zellen, Maushirngewebe, Rattenhirngewebe, U2OS-Zellen

## Hintergrundinformationen

SULT1A1, also named as ST1A1, P-PST 1, ST1A3, Ts-PST, P-PST 1, STP and STP1, belongs to the sulfotransferase 1 family. It catalyzes the sulfate conjugation of catecholamines, phenolic drugs and neurotransmitters. SULT1A1 is also responsible for the sulfation and activation of minoxidil. It mediates the metabolic activation of carcinogenic N-hydroxyarylamines to DNA binding products and could so participate as modulating factor of cancer risk. SULT1A1 is one of two phenol sulfotransferases with thermostable enzyme activity.

## Lagerung

Lagerungsbedingungen:

Bei -20°C lagern. Nach dem Versand ein Jahr lang stabil

Lagerungspuffer:

PBS with 0.1% sodium azide and 50% glycerol pH 7.3.

Aliquotieren ist nicht notwendig bei -20°C Lagerung

\*\*\* 20ul-Größen enthalten 0.1% BSA

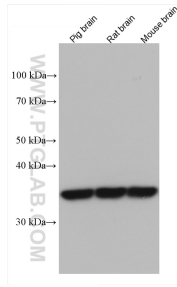
For technical support and original validation data for this product please contact:

T: 1 (888) 4PTGLAB (1-888-478-4522) (toll free in USA), or 1(312) 455-8498 (outside USA)

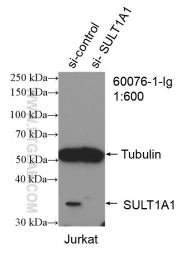
E: proteintech@ptglab.com  
W: ptglab.com

This product is exclusively available under Proteintech Group brand and is not available to purchase from any other manufacturer.

## Ausgewählte Validierungsdaten



Various lysates were subjected to SDS PAGE followed by western blot with 60076-1-Ig (SULT1A1 antibody) at dilution of 1:3000 incubated at room temperature for 1.5 hours.



WB result of SULT1A1 antibody (60076-1-Ig; 1:600; incubated at room temperature for 1.5 hours) with sh-Control and sh-SULT1A1 transfected Jurkat cells.