

## Allgemeine Informationen

<b>Katalog-Nr.:</b> 60079-1-Ig	<b>GenBank-Zugangsnummer:</b> BC130486	<b>Reinigungsmethode:</b> Protein-A-Reinigung
<b>Größe:</b> 150ul, Konzentration: 713 µg/ml durch die Bradford-Methode mit BSA als Standard;	<b>GeneID (NCBI):</b> 140690	<b>CloneNo.:</b> 2B12E2
<b>Wirt:</b> Maus	<b>Vollständiger Name:</b> CCCTC-binding factor (zinc finger protein)-like	<b>Empfohlene Verdünnungen:</b> WB 1:500-1:2000 IF 1:200-1:800
<b>Isotyp:</b> IgG1	<b>Berechnete Masse:</b> 82 kDa, 75 kDa	
<b>Immunogen Katalognummer:</b> AG1003	<b>Beobachtete Masse:</b> 75 kDa	

## Anwendungen

<b>Geprüfte Anwendungen:</b> IF, WB, ELISA	<b>Positivkontrollen:</b> WB : HeLa-Zellen, SMMC-7721-Zellen IF : HeLa-Zellen,
<b>In Publikationen genannte Anwendungen:</b> WB	
<b>Getestete Reaktivität:</b> Human, Maus	
<b>Zitierte Arten:</b> Human	

## Hintergrundinformationen

CTCF, also named BORIS (for brother of the regulator of imprinted sites) is a paralogue of the 11 zinc-finger transcription factor, CTCF. It is predominantly expressed in spermatocytes in the testis, also can be found in tumors and cancer cell lines. It mainly participates in insulator function, nuclear architecture and transcriptional control, which probably acts by recruiting epigenetic chromatin modifiers. It has a key role in gene imprinting in male germline, by participating in the establishment of differential methylation at the IGF2/H19 imprinted control region (ICR). Directly binds the unmethylated H19 ICR and recruits the PRMT7 methyltransferase, leading to methylate histone H4 'Arg-3' to form H4R3me2.

## Bemerkenswerte Veröffentlichungen

Verfasser	Pubmed ID	Journal	Anwendung
Kui Xiao	34714841	PLoS One	WB

## Lagerung

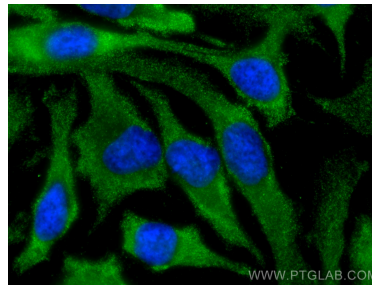
**Lagerungsbedingungen:**  
Bei -20°C lagern. Nach dem Versand ein Jahr lang stabil  
**Lagerungspuffer:**  
PBS with 0.1% sodium azide and 50% glycerol pH 7.3.  
Aliquotieren ist nicht notwendig bei -20°C Lagerung

\*\*\* 20ul-Größen enthalten 0.1% BSA

## Ausgewählte Validierungsdaten



HeLa cells were subjected to SDS PAGE followed by western blot with 60079-1-Ig (BORIS antibody) at dilution of 1:1000 incubated at room temperature for 1.5 hours.



Immunofluorescent analysis of (-20°C Methanol) fixed HeLa cells using BORIS antibody (60079-1-Ig, Clone: 2B12E2) at dilution of 1:400 and CoraLite® 488-Conjugated AffiniPure Goat Anti-Mouse IgG(H+L).