

Nur für Forschungszwecke

Fibulin 5 Monoklonaler Antikörper

Katalog-Nr.: 60081-1-Ig

Vorgestelltes Produkt

5 Publikationen



Allgemeine Informationen

Katalog-Nr.:

60081-1-Ig

Größe:

150ul, Konzentration: 2000 µg/ml von 10516

Nanodrop und 1200 µg/ml durch die Bradford-Methode mit BSA als Standard;

Wirt:

Maus

Isotyp:

IgG1

Immunogen Katalognummer:

AG2859

GenBank-Zugangsnummer:

BC022280

GeneID (NCBI):

10516

Vollständiger Name:

fibulin 5

Berechnete Masse:

448 aa, 50 kDa

Beobachtete Masse:

65 kDa

Reinigungsmethode:

Caprylsäure/Ammoniumsulfat-Präzipitation

CloneNo.:

2A5C8

Empfohlene Verdünnungen:

WB 1:1000-1:6000

IF 1:50-1:100

Anwendungen

Geprüfte Anwendungen:

IF, WB, ELISA

In Publikationen genannte Anwendungen:

IF, IHC, WB

Getestete Reaktivität:

Hausschwein, Human, Maus, Ratte

Zitierte Arten:

Human, Maus

Positivkontrollen:

WB: MCF-7-Zellen, Hausschwein-Herzgewebe, humanes Herzgewebe, humanes Plazenta-Gewebe, Rattenherzgewebe

IF: A549-Zellen,

Hintergrundinformationen

Fibulin-5, also known as EVEC and DANCE, is an extracellular matrix glycoprotein, secreted by various cell types such as vascular smooth muscle cells, fibroblasts and endothelial cells. Structurally, Fibulin-5 contains an Arg-Gly-Asp (RGD) motif and calcium-binding EGF-like domains. It promotes adhesion of endothelial cells through interaction of integrins and the RGD motif. FBLN5 mutations have been described in patients with age-related macular degeneration, as well as being involved in Charcot-Marie-Tooth neuropathies.

Bemerkenswerte Veröffentlichungen

| Verfasser | Pubmed ID | Journal | Anwendung |
|------------------|-----------|---------------------------------|-----------|
| Emna Ouni | 35341935 | Matrix Biol | IF |
| Chung-Feng Hwang | 24386352 | PLoS One | IHC |
| Dongdong Yao | 34474906 | Mater Sci Eng C Mater Biol Appl | WB, IF |

Lagerung

Lagerungsbedingungen:

Bei -20°C lagern. Nach dem Versand ein Jahr lang stabil

Lagerungspuffer:

PBS with 0.1% sodium azide and 50% glycerol pH 7.3.

Aliquotieren ist nicht notwendig bei -20°C Lagerung

*** 20ul-Größen enthalten 0.1% BSA

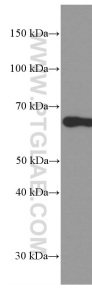
For technical support and original validation data for this product please contact:

T: 1 (888) 4PTGLAB (1-888-478-4522) (toll free in USA), or 1(312) 455-8498 (outside USA)

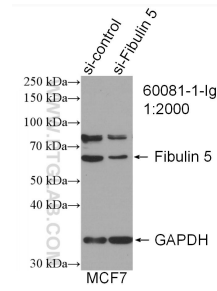
E: proteintech@ptglab.com
W: ptglab.com

This product is exclusively available under Proteintech Group brand and is not available to purchase from any other manufacturer.

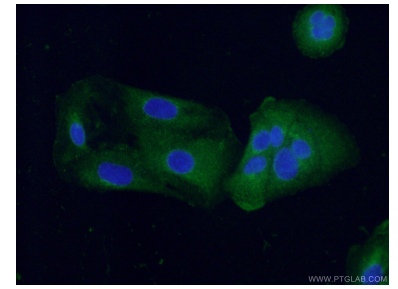
Ausgewählte Validierungsdaten



MCF-7 cells were subjected to SDS PAGE followed by western blot with 60081-1-Ig (Fibulin 5 antibody) at dilution of 1:3000 incubated at room temperature for 1.5 hours.



WB result of Fibulin 5 antibody (60081-1-Ig; 1:2000; incubated at room temperature for 1.5 hours) with sh-Control and sh-Fibulin 5 transfected MCF-7 cells.



Immunofluorescent analysis of (-20°C Ethanol) fixed A549 cells using 60081-1-Ig(Fibulin 5 antibody) at dilution of 1:100 and Alexa Fluor 488-conjugated AffiniPure Goat Anti-Mouse IgG(H+L).