

Allgemeine Informationen

Katalog-Nr.: 60095-1-Ig	GenBank-Zugangsnummer: BC025742	Reinigungsmethode: Protein-A-Reinigung
Größe: 150ul , Konzentration: 2100 µg/ml von81618 Nanodrop und 953 µg/ml durch die Bradford-Methode mit BSA als Standard;	GeneID (NCBI): Vollständiger Name: integral membrane protein 2C	CloneNo.: 2E8G11
Wirt: Maus	Berechnete Masse: 230aa,26 kDa; 267aa,30 kDa	Empfohlene Verdünnungen: IF 1:20-1:200
Isotyp: IgG2a	Beobachtete Masse: 35 kDa	
Immunogen Katalognummer: AG4409		

Anwendungen

Geprüfte Anwendungen: FC, IF, ELISA	Positivkontrollen: IF : HepG2-Zellen,
In Publikationen genannte Anwendungen: FC	
Getestete Reaktivität: Human	
Zitierte Arten: Human	

Hintergrundinformationen

The Integral membrane protein 2C (ITM2C) is a type II integral transmembrane protein belonging to a family composed of at least two other members, ITM2A and ITM2B. ITM2C, often called transmembrane protein BRI3, is highly expressed in brain tissue. Yeast two-hybrid screen system revealed that BRI3 could interact with beta-secretase beta-amyloid protein converting enzyme (BACE)1 and the microtubule-destabilizing protein SCG10 (STMN2). It may play a role in TNF-induced cell death and neuronal differentiation. BRI3 was found to inhibit the various processing of amyloid precursor protein (APP) by blocking the access of alpha- and beta-secretases to APP, competitive inhibition of APP processing by BRI3 may provide a new approach to Alzheimer disease (AD) therapy and prevention.

Bemerkenswerte Veröffentlichungen

Verfasser	Pubmed ID	Journal	Anwendung
Noemi Andor	32215369	NAR Genom Bioinform	FC

Lagerung

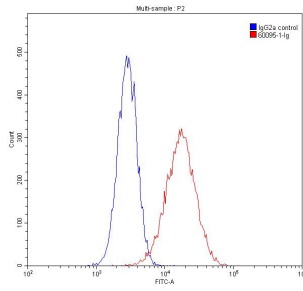
Lagerungsbedingungen:
Bei -20°C lagern. Nach dem Versand ein Jahr lang stabil
Lagerungspuffer:
PBS mit 0.02% Natriumazid und 50% Glycerin pH 7.3.
Aliquotieren ist nicht notwendig bei -20°C Lagerung

***** 20ul-Größen enthalten 0.1% BSA**

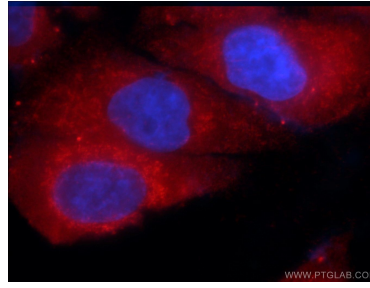
For technical support and original validation data for this product please contact:
 T: 1 (888) 4PTGLAB (1-888-478-4522) (toll free in USA), or 1(312) 455-8498 (outside USA)
 E: proteintech@ptglab.com
 W: ptglab.com

This product is exclusively available under Proteintech Group brand and is not available to purchase from any other manufacturer.

Ausgewählte Validierungsdaten



1×10^6 HepG2 cells were stained with 0.20 μ g ITM2C antibody (60095-1-Ig, red) and control antibody (blue). Fixed with 90% MeOH.



Immunofluorescent analysis of HepG2 cells using 60095-1-Ig (ITM2C antibody) at dilution of 1:50 and Rhodamine-Goat anti-Mouse IgG.