

Nur für Forschungszwecke

IFNG Monoklonaler Antikörper

Katalog-Nr.:60101-1-Ig



Allgemeine Informationen

Katalog-Nr.: 60101-1-Ig	GenBank-Zugangsnummer: BC070256	Reinigungsmethode: Caprylsäure/Ammoniumsulfat-Präzipitation
Größe: 150ul, Konzentration: 1000 µg/ml durch die Bradford-Methode mit BSA als Standard;	GeneID (NCBI): 3458	CloneNo.: 1C10C6
Wirt: Maus	Vollständiger Name: IFN gamma	Empfohlene Verdünnungen: WB 1:500-1:1000
Isotyp: IgG2a	Berechnete Masse: 166 aa, 19 kDa	
Immunogen Katalognummer: AG8320	Beobachtete Masse: 25 kDa	

Anwendungen

Geprüfte Anwendungen: WB,ELISA	Positivkontrollen: WB : U-937-Zellen,
Getestete Reaktivität: Human	

Hintergrundinformationen

IFNG is a soluble cytokine that is the only member of the type II class of IFNs. It is secreted by Th1 cells, cytotoxic T cells and NK cells. The cytokine is associated with antiviral, immunoregulatory and anti-tumor properties and is a potent activator of macrophages. It plays crucial roles in pathogen clearance. Aberrant IFNG expression is associated with a number of autoinflammatory and autoimmune diseases. It has been identified in many studies as a biomarker for pleural tuberculosis (TB). Mutations in this gene are associated with aplastic anemia.

Lagerung

Lagerungsbedingungen:
Bei -20°C lagern. Nach dem Versand ein Jahr lang stabil
Lagerungspuffer:
PBS with 0.1% sodium azide and 50% glycerol pH 7.3.
Aliquotieren ist nicht notwendig bei -20°C Lagerung

***** 20ul-Größen enthalten 0.1% BSA**

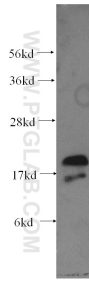
For technical support and original validation data for this product please contact:

T: 1 (888) 4PTGLAB (1-888-478-4522) (toll free in USA), or 1(312) 455-8498 (outside USA)

E: proteintech@ptglab.com
W: ptglab.com

This product is exclusively available under Proteintech Group brand and is not available to purchase from any other manufacturer.

Ausgewählte Validierungsdaten



U-937 cells were subjected to SDS PAGE followed by western blot with 60101-1-Ig (IFNG antibody) at dilution of 1:500 incubated at room temperature for 1.5 hours.