

Allgemeine Informationen

Katalog-Nr.: 60103-1-Ig	GenBank-Zugangsnummer: BC001115	Reinigungsmethode: Caprylsäure/Ammoniumsulfat-Präzipitation
Größe: 150ul	GeneID (NCBI): 4358	CloneNo.: 3H5H11
Wirt: Maus	Vollständiger Name: Mpv17 mitochondrial inner membrane protein	Empfohlene Verdünnungen: WB 1:200-1:1000 IHC 1:20-1:200
Isotyp: IgG1	Berechnete Masse: 20 kDa	
Immunogen Katalognummer: AG0312	Beobachtete Masse: 26 kDa	

Anwendungen

Geprüfte Anwendungen: IHC, WB,ELISA	Positivkontrollen: WB : humanes Herzgewebe, IHC : humanes Lebergewebe,
In Publikationen genannte Anwendungen: WB	
Getestete Reaktivität: Human	
Hinweis-IHC: Antigendemaskierung mit TE-Puffer pH 9,0 empfohlen. (*) Wahlweise kann die Antigendemaskierung auch mit Citratpuffer pH 6,0 erfolgen.	

Hintergrundinformationen

MPV17, also termed as SYM1, encodes an inner mitochondrial membrane protein. It's potential candidate that may account for the mitochondrial (mt) DNA depletion syndromes (MDDS) characterized by a severe, tissue-specific decrease of mtDNA copy number and ultimate organ failure. It's a human ortholog of the mouse kidney disease gene Mpv17. Absence or malfunction of MPV17 causes oxidative phosphorylation (OXPHOS) failure and mtDNA depletion, not only in affected individuals but also in Mpv17^{-/-} mice. MPV17 contribute to ROS homeostasis, but the downstream signaling is unknown yet. Catalog#60103-1-Ig is a mouse monoclonal antibody raised against the full-length of human MPV17.

Bemerkenswerte Veröffentlichungen

Verfasser	Pubmed ID	Journal	Anwendung
Hans Weiher	26921094	BMC Res Notes	WB

Lagerung

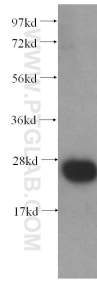
Lagerungsbedingungen:
Bei -20°C lagern. Nach dem Versand ein Jahr lang stabil
Lagerungspuffer:
PBS with 0.1% sodium azide and 50% glycerol pH 7.3.
Aliquotieren ist nicht notwendig bei -20°C Lagerung

***** 20ul-Größen enthalten 0.1% BSA**

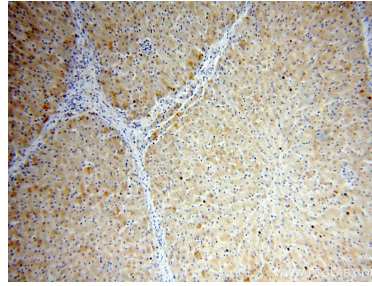
For technical support and original validation data for this product please contact:
T: 1 (888) 4PTGLAB (1-888-478-4522) (toll free in USA), or 1(312) 455-8498 (outside USA)
E: proteintech@ptglab.com
W: ptglab.com

This product is exclusively available under Proteintech Group brand and is not available to purchase from any other manufacturer.

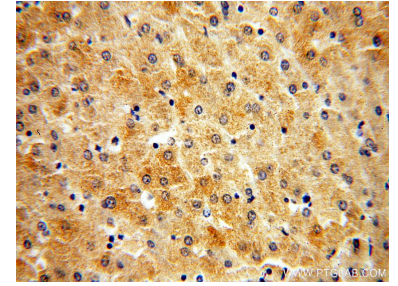
Ausgewählte Validierungsdaten



human heart tissue were subjected to SDS PAGE followed by western blot with 60103-1-Ig (MPV17 antibody) at dilution of 1:100 incubated at room temperature for 1.5 hours.



Immunohistochemical analysis of paraffin-embedded human liver using 60103-1-Ig(MPV17 antibody) at dilution of 1:50 (under 10x lens).



Immunohistochemical analysis of paraffin-embedded human liver using 60103-1-Ig(MPV17 antibody) at dilution of 1:50 (under 40x lens).