

## Allgemeine Informationen

<b>Katalog-Nr.:</b> 60112-1-Ig	<b>GenBank-Zugangsnummer:</b> BC030975	<b>Reinigungsmethode:</b> Caprylsäure/Ammoniumsulfat-Präzipitation
<b>Größe:</b> 150ul , Konzentration: 1500 µg/ml von9173 Nanodrop und 1000 µg/ml durch die Bradford-Methode mit BSA als Standard;	<b>GeneID (NCBI):</b> interleukin 1 receptor-like 1	<b>CloneNo.:</b> 7A2A7
<b>Wirt:</b> Maus	<b>Vollständiger Name:</b> interleukin 1 receptor-like 1	<b>Empfohlene Verdünnungen:</b> WB 1:5000-1:50000 IHC 1:100-1:400
<b>Isotyp:</b> IgG1	<b>Berechnete Masse:</b> 63 kDa, 37 kDa, 30 kDa	
<b>Immunogen Katalognummer:</b> AG2555	<b>Beobachtete Masse:</b> 63 kDa	

## Anwendungen

<b>Geprüfte Anwendungen:</b> FC, IHC, WB, ELISA	<b>Positivkontrollen:</b> <b>WB</b> : HEK-293-Zellen, fetales humanes Hirngewebe, Hausschwein-Hirngewebe, Maushirngewebe, PC-12-Zellen, Ratten-Cerebellum-Gewebe, Rattenhirngewebe, ROS1728-Zellen, SGC-7901-Zellen <b>IHC</b> : humanes Herzgewebe,
<b>In Publikationen genannte Anwendungen:</b> IF, IHC, WB	
<b>Getestete Reaktivität:</b> Hausschwein, Human, Maus, Ratte	
<b>Zitierte Arten:</b> Hausschwein, Human, Maus	
<b>Hinweis-IHC: Antigendemaskierung mit TE-Puffer pH 9,0 empfohlen. (*) Wahlweise kann die Antigendemaskierung auch mit Citratpuffer pH 6,0 erfolgen.</b>	

## Hintergrundinformationen

ST2, also known as IL1RL1, is a member of the IL-1 superfamily and serves as the receptor for IL-33. It plays a major role in immune and inflammatory responses. ST2 is expressed by various types of immune cells including Th2 cells, mast cells, type 2 innate lymphoid cells, eosinophils, basophils, NK cells, and non-immune cells, including cardiomyocytes. Two forms of ST2 exist: a membrane-bound form and a soluble form (sST2). The membrane-bound form activates the MyD88/NF-κB signaling pathway to enhance mast cell, Th2, regulatory T cell (Treg), and innate lymphoid cell type 2 functions. sST2 acts as a decoy receptor. (PMID: 27055914; 23999434; 28484466)

## Bemerkenswerte Veröffentlichungen

Verfasser	Pubmed ID	Journal	Anwendung
Shuhei Kobayashi	33024217	Sci Rep	IF
Zuojia Chen	33220232	Immunity	IF
Elena Vianello	31316160	Sci Rep	WB,IHC

## Lagerung

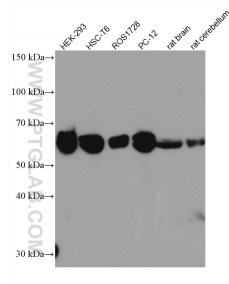
**Lagerungsbedingungen:**  
Bei -20°C lagern. Nach dem Versand ein Jahr lang stabil  
**Lagerungspuffer:**  
PBS with 0.1% sodium azide and 50% glycerol pH 7.3.  
Aliquotieren ist nicht notwendig bei -20°C Lagerung

\*\*\* 20ul-Größen enthalten 0.1% BSA

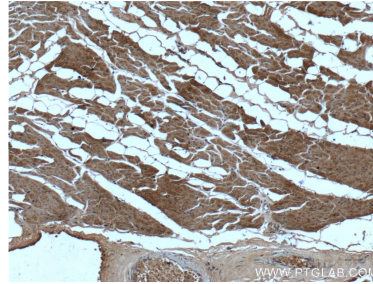
For technical support and original validation data for this product please contact:  
T: 1 (888) 4PTGLAB (1-888-478-4522) (toll free in USA), or 1(312) 455-8498 (outside USA)  
E: [proteintech@ptglab.com](mailto:proteintech@ptglab.com)  
W: [ptglab.com](http://ptglab.com)

This product is exclusively available under Proteintech Group brand and is not available to purchase from any other manufacturer.

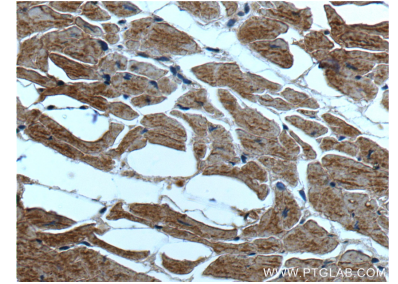
## Ausgewählte Validierungsdaten



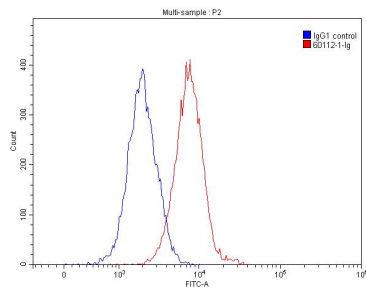
Various lysates were subjected to SDS PAGE followed by western blot with 60112-1-Ig (ST2 antibody) at dilution of 1:10000 incubated at room temperature for 1.5 hours.



Immunohistochemical analysis of paraffin-embedded human heart tissue slide using 60112-1-Ig (ST2 antibody at dilution of 1:200 (under 10x lens).



Immunohistochemical analysis of paraffin-embedded human heart tissue slide using 60112-1-Ig (ST2 antibody at dilution of 1:200 (under 40x lens).



1X10<sup>6</sup> HEK-293 cells were stained with 0.20ug ST2 antibody (60112-1-Ig, red) and control antibody (blue). Fixed with 90% MeOH.