

Nur für Forschungszwecke

Gastrokine 1 Monoklonaler Antikörper

Katalog-Nr.:60130-1-Ig



Allgemeine Informationen

Katalog-Nr.: 60130-1-Ig	GenBank-Zugangsnummer: BC059778	Reinigungsmethode: Protein-A-Reinigung
Größe: 150ul , Konzentration: 1500 µg/ml von56287 Nanodrop und 1500 µg/ml durch die Bradford-Methode mit BSA als Standard;	GeneID (NCBI): 56287	CloneNo.: 3C10E3
Wirt: Maus	Vollständiger Name: gastrokine 1	Empfohlene Verdünnungen: WB 1:5000-1:50000 IHC 1:50-1:500 IF 1:200-1:800
Isotyp: IgG2a	Berechnete Masse: 22 kDa	
Immunogen Katalognummer: AG6091	Beobachtete Masse: 22 kDa	

Anwendungen

Geprüfte Anwendungen:

IF, IHC, WB, ELISA

Getestete Reaktivität:

Hausschwein, Human, Maus, Ratte

Hinweis-IHC: Antigendemaskierung mit TE-Puffer pH 9,0 empfohlen. (*) Wahlweise kann die Antigendemaskierung auch mit Citratpuffer pH 6,0 erfolgen.

Positivkontrollen:

WB : humanes Magengewebe, Ratten-Magengewebe

IHC : humanes Magengewebe,

IF : humanes Magengewebe, Maus-Magengewebe

Hintergrundinformationen

Gastrokine 1 (GKN1), a stomach-specific protein also known as 18 kDa antrum mucosa protein (AMP-18) or foveolin, belongs to the gastrokine family of gastric mucus cell-secreted proteins. The human GKN1 gene has been localized in a region of chromosome 2p13 of about 6 kb and contains 6 exons. GKN1 is expressed only in normal human stomach, but is absent from gastric adenocarcinomas, gastro-esophageal adenocarcinoma cell lines, and other normal and tumor gastro-intestinal tissues. GKN1 may play an important role in normal gastric function and may be a gastric tumour suppressor.

Lagerung

Lagerungsbedingungen:

Bei -20°C lagern. Nach dem Versand ein Jahr lang stabil

Lagerungspuffer:

PBS mit 0.02% Natriumazid und 50% Glycerin pH 7.3.

Aliquotieren ist nicht notwendig bei -20°C Lagerung

*** 20ul-Größen enthalten 0.1% BSA

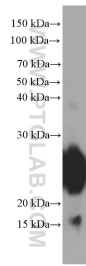
For technical support and original validation data for this product please contact:

T: 1 (888) 4PTGLAB (1-888-478-4522) (toll free
in USA), or 1(312) 455-8498 (outside USA)

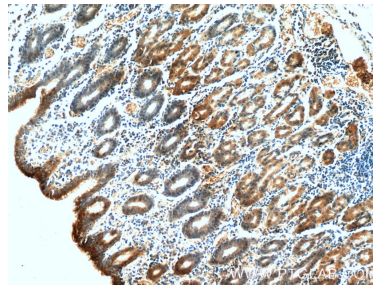
E: proteintech@ptglab.com
W: ptglab.com

This product is exclusively available under Proteintech Group brand and is not available to purchase from any other manufacturer.

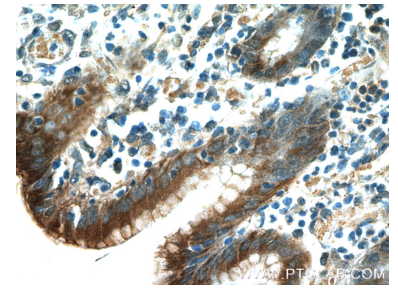
Ausgewählte Validierungsdaten



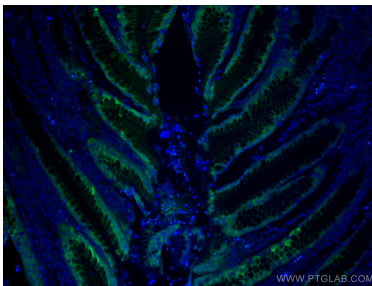
human stomach tissue were subjected to SDS PAGE followed by western blot with 60130-1-Ig (GKN1 Antibody) at dilution of 1:20000 incubated at room temperature for 1.5 hours.



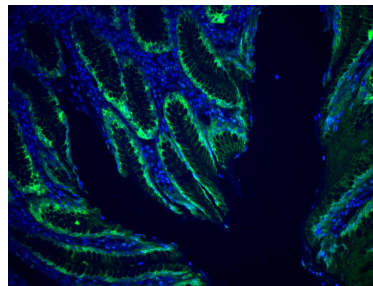
Immunohistochemical analysis of paraffin-embedded human stomach tissue slide using 60130-1-Ig (GKN1 Antibody) at dilution of 1:200 (under 10x lens).



Immunohistochemical analysis of paraffin-embedded human stomach tissue slide using 60130-1-Ig (GKN1 Antibody) at dilution of 1:200 (under 40x lens).



Immunofluorescent analysis of (4% PFA) fixed human stomach tissue using Gastrokine 1 antibody (60130-1-Ig, Clone: 3C10E3) at dilution of 1:400 and CoraLite®488-Conjugated AffiniPure Goat Anti-Mouse IgG(H+L).



Immunofluorescent analysis of (4% PFA) fixed human stomach tissue using Gastrokine 1 antibody (60130-1-Ig, Clone: 3C10E3) at dilution of 1:400 and CoraLite®488-Conjugated AffiniPure Goat Anti-Mouse IgG(H+L).