

Allgemeine Informationen

Katalog-Nr.:

60136-1-Ig

Größe:

150ul , Konzentration: 500 µg/ml durch die Bradford-Methode mit BSA als Standard;

Wirt:

Maus

Isotyp:

IgG1

Immunogen Katalognummer:

AG10295

GenBank-Zugangsnummer:

BC008678

GeneID (NCBI):

3553

Vollständiger Name:

interleukin 1, beta

Berechnete Masse:

269 aa, 31 kDa

Reinigungsmethode:

Protein-G-Reinigung

CloneNo.:

1C6F12

Empfohlene Verdünnungen:

WB 1:500-1:1000
IP 0.5-4.0 µg für IP und 1:500-1:1000 für WB
IHC 1:50-1:500

Anwendungen

Geprüfte Anwendungen:

IHC, IP, WB, ELISA

In Publikationen genannte Anwendungen:

ELISA, WB

Getestete Reaktivität:

Human

Zitierte Arten:

Human, Maus, Ratte

Hinweis-IHC: Antigendemaskierung mit TE-Puffer pH 9,0 empfohlen. (*) Wahlweise kann die Antigendemaskierung auch mit Citratpuffer pH 6,0 erfolgen.

Positivkontrollen:

WB : Recombinant protein,

IP : RAW 264.7-Zellen,

IHC : humanes Hautkrebsgewebe,

Hintergrundinformationen

Interleukin-1, produced mainly by blood monocytes, mediates the panoply of host reactions collectively known as acute phase response. It is identical to endogenous pyrogen. The multiple biologic activities that define IL1 are properties of a 15 to 18 kDa protein that is derived from a 30- to 35-kD precursor. Interleukin 1β (IL-1β) is a member of the interleukin 1 cytokine family. It is a pro-inflammatory cytokine against infection, playing an important role in the pathogenesis of cancers. It signals through various adaptor proteins and kinases that lead to activation of numerous downstream targets. The expression level of IL-1β is very low.

Bemerkenswerte Veröffentlichungen

Verfasser	Pubmed ID	Journal	Anwendung
Xiaqiong Wang	25326752	Nat Immunol	WB
Yue Pang	29037260	Cell Commun Signal	WB
Yi Huang	32367047	Nat Cell Biol	WB

Lagerung

Lagerungsbedingungen:

Bei -20°C lagern. Nach dem Versand ein Jahr lang stabil

Lagerungspuffer:

PBS mit 0.02% Natriumazid und 50% Glycerin pH 7.3.

Aliquotieren ist nicht notwendig bei -20°C Lagerung

***** 20ul-Größen enthalten 0.1% BSA**

For technical support and original validation data for this product please contact:

T: 1 (888) 4PTGLAB (1-888-478-4522) (toll free in USA), or 1(312) 455-8498 (outside USA)

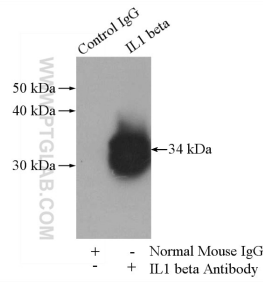
E: proteintech@ptglab.com
W: ptglab.com

This product is exclusively available under Proteintech Group brand and is not available to purchase from any other manufacturer.

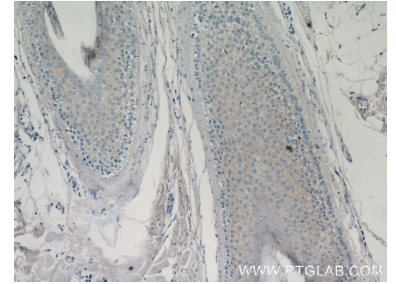
Ausgewählte Validierungsdaten



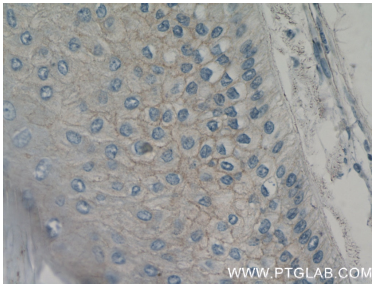
Recombinant protein were subjected to SDS PAGE followed by western blot with 60136-1-Ig (IL1 beta antibody) at dilution of 1:500 incubated at room temperature for 1.5 hours.



IP Result of anti-IL1 beta (IP:60136-1-Ig, 5ug; Detection:60136-1-Ig 1:600) with RAW 264.7 cells lysate 4000ug.



Immunohistochemical analysis of paraffin-embedded human skin cancer tissue slide using 60136-1-Ig (IL1 beta antibody at dilution of 1:50 (under 10x lens).



Immunohistochemical analysis of paraffin-embedded human skin cancer tissue slide using 60136-1-Ig (IL1 beta antibody at dilution of 1:50 (under 40x lens).