

## Allgemeine Informationen

<b>Katalog-Nr.:</b> 60138-1-Ig	<b>GenBank-Zugangsnummer:</b> BC107777	<b>Reinigungsmethode:</b> Protein-G-Reinigung
<b>Größe:</b> 150ul , Konzentration: 1000 µg/ml durch die Bradford-Methode mit BSA als Standard;	<b>GeneID (NCBI):</b> 3601	<b>CloneNo.:</b> 5E3E1
<b>Wirt:</b> Maus	<b>Vollständiger Name:</b> interleukin 15 receptor, alpha	<b>Empfohlene Verdünnungen:</b> WB 1:1000-1:6000
<b>Isotyp:</b> IgG1	<b>Berechnete Masse:</b> 231 aa, 24 kDa	
<b>Immunogen Katalognummer:</b> AG10200	<b>Beobachtete Masse:</b> 55 kDa	

## Anwendungen

<b>Geprüfte Anwendungen:</b> WB,ELISA	<b>Positivkontrollen:</b> WB : Raji-Zellen, Daudi-Zellen, HeLa-Zellen
<b>Getestete Reaktivität:</b> Human	

## Hintergrundinformationen

Interleukin-15 (IL-15) is a pleiotropic cytokine that plays an important role in both innate and adaptive immunity. IL-15 is mainly produced by activated monocytes, macrophages and dendritic cells, and is structurally similar to IL-2 (PMID: 8178155; 12401478). These two cytokines share the same IL-2/15R $\beta$  and common  $\gamma$ -chain receptor subunits. In addition, IL-2 and IL-15 have their own private  $\alpha$ -chain receptor subunit, IL-2R $\alpha$  and IL-15R $\alpha$ , respectively (PMID: 7641685). The IL-15R $\alpha$  chain is expressed by many cell types including monocytes, DCs, NK, T cells and fibroblasts. Several isoforms of IL-15R $\alpha$  exist and are generated either by alternative splicing or by proteolytic cleavage (PMID: 10480910; 15265897). The calculated molecular weight of full-length IL-15R $\alpha$  is 28 kDa, IL-15R $\alpha$  can be glycosylated, and larger apparent molecular weights of 55-65 kDa have been reported by some researches (PMID: 10480910; 15976182; 15671076; 17912462).

## Lagerung

**Lagerungsbedingungen:**  
Bei -20°C lagern. Nach dem Versand ein Jahr lang stabil  
**Lagerungspuffer:**  
PBS mit 0.02% Natriumazid und 50% Glycerin pH 7.3.  
Aliquotieren ist nicht notwendig bei -20°C Lagerung

**\*\*\* 20ul-Größen enthalten 0.1% BSA**

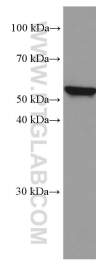
For technical support and original validation data for this product please contact:

T: 1 (888) 4PTGLAB (1-888-478-4522) (toll free in USA), or 1(312) 455-8498 (outside USA)

E: [proteintech@ptglab.com](mailto:proteintech@ptglab.com)  
W: [ptglab.com](http://ptglab.com)

**This product is exclusively available under Proteintech Group brand and is not available to purchase from any other manufacturer.**

## Ausgewählte Validierungsdaten



Raji cells were subjected to SDS PAGE followed by western blot with 60138-1-Ig (IL15RA antibody) at dilution of 1:3000 incubated at room temperature for 1.5 hours.