

Nur für Forschungszwecke

PAX8 Monoklonaler Antikörper

Katalog-Nr.: 60145-4-Ig **6 Publikationen**



Allgemeine Informationen

Katalog-Nr.: 60145-4-Ig	GenBank-Zugangsnummer: BC001060	Reinigungsmethode: Protein-A-Reinigung
Größe: 150ul, Konzentration: 2100 µg/ml von 7849 Nanodrop und 1000 µg/ml durch die Bradford-Methode mit BSA als Standard;	GeneID (NCBI): paired box 8	CloneNo.: 4H7B3
Wirt: Maus	Berechnete Masse: 48 kDa	Empfohlene Verdünnungen: WB 1:1000-1:4000 IHC 1:5000-1:20000 IF 1:50-1:500
Isotyp: IgG2b	Beobachtete Masse: 48 kDa	
Immunogen Katalognummer: AG0306		

Anwendungen

Geprüfte Anwendungen: IF, IHC, WB, ELISA	Positivkontrollen: WB : SKOV-3-Zellen, HepG2-Zellen
In Publikationen genannte Anwendungen: IF, IHC, WB	IHC : humanes Ovarialkarzinomgewebe, humanes Schilddrüsenkarzinomgewebe, humanes Tonsillitisgewebe, Mausnierengewebe, Rattennierengewebe
Getestete Reaktivität: Human, Maus	IF : SKOV-3-Zellen,
Zitierte Arten: Human, Maus	

Hinweis-IHC: Antigendemaskierung mit TE-Puffer pH 9,0 empfohlen. (*) Wahlweise kann die Antigendemaskierung auch mit Citratpuffer pH 6,0 erfolgen.

Hintergrundinformationen

PAX8 is a member of the paired box (PAX) family of transcription factors, typically containing a paired box domain and a paired-type homeodomain. It is expressed during organogenesis of the thyroid gland, kidney and Mullerian system. It is thought to regulate the expression of Wilms tumor suppressor (WT1) gene and mutations in PAX8 have been associated with Wilms tumor cells, thyroid and ovarian carcinomas. PAX8 is a useful marker in distinguishing ovarian carcinomas from mammary carcinomas (PMID: 18724243). PAX8 is expressed in a high percentage of ovarian serous, endometrioid, and clear cell carcinomas, but only rarely in primary ovarian mucinous adenocarcinomas.

PAX8 has 5 isoforms with calculated MW 31kd, 34kd, 41kd, 43kd and 48kd. And there is a 60kd band corresponding to the electrophoretic mobility of PAX8 (PMID:15650356).

Bemerkenswerte Veröffentlichungen

Verfasser	Pubmed ID	Journal	Anwendung
Xue Tan	34631693	Front Cell Dev Biol	IHC,IF
Ping Qiu	35672291	Cell Death Discov	WB
Hyesung Kim	35778589	Sci Rep	IHC

Lagerung

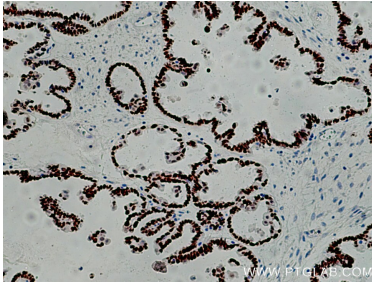
Lagerungsbedingungen:
Bei -20°C lagern. Nach dem Versand ein Jahr lang stabil
Lagerungspuffer:
PBS mit 0.02% Natriumazid und 50% Glycerin pH 7.3.
Aliquotieren ist nicht notwendig bei -20°C Lagerung

*** 20ul-Größen enthalten 0.1% BSA

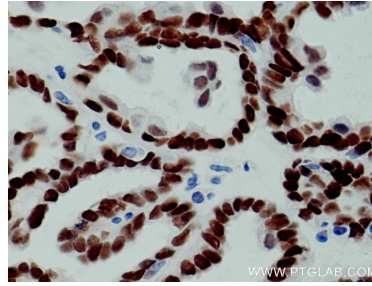
For technical support and original validation data for this product please contact:
T: 1 (888) 4PTGLAB (1-888-478-4522) (toll free in USA), or 1(312) 455-8498 (outside USA)
E: proteintech@ptglab.com
W: ptglab.com

This product is exclusively available under Proteintech Group brand and is not available to purchase from any other manufacturer.

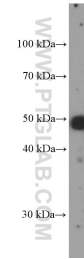
Ausgewählte Validierungsdaten



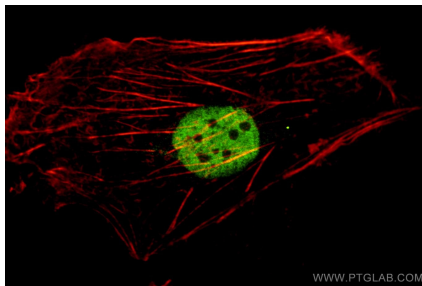
Immunohistochemical analysis of paraffin-embedded human ovary tumor tissue slide using 60145-4-Ig (PAX8 antibody) at dilution of 1:10000 (under 10x lens). Heat mediated antigen retrieval with Tris-EDTA buffer (pH 9.0).



Immunohistochemical analysis of paraffin-embedded human ovary tumor tissue slide using 60145-4-Ig (PAX8 antibody) at dilution of 1:10000 (under 40x lens). Heat mediated antigen retrieval with Tris-EDTA buffer (pH 9.0).



SKOV-3 cells were subjected to SDS PAGE followed by western blot with 60145-4-Ig (PAX8 Antibody) at dilution of 1:2000 incubated at room temperature for 1.5 hours.



Confocal immunofluorescent analysis of (4% PFA) fixed SKOV-3 cells using 60145-4-Ig (PAX8 antibody) at dilution of 1:100 and CoraLite488-Conjugated AffiniPure Goat Anti-Mouse IgG(H+L). Phalloidin stains F-actin (Red).