

Nur für Forschungszwecke

RAB31-specific Monoklonaler Antikörper

Katalog-Nr.:60146-1-Ig



Allgemeine Informationen

Katalog-Nr.:
60146-1-Ig

Größe:
150ul , Konzentration: 1000 µg/ml
durch die Bradford-Methode mit BSA
als Standard;

Wirt:
Maus

Isotyp:
IgG2b

GenBank-Zugangsnummer:
NM_006868

GeneID (NCBI):
11031

Vollständiger Name:
RAB31, member RAS oncogene family

Berechnete Masse:
22 kDa

Reinigungsmethode:
Caprylsäure/Ammoniumsulfat-
Präzipitation

CloneNo.:
5C1E9

Anwendungen

Geprüfte Anwendungen:
IHC, WB,ELISA

Getestete Reaktivität:
Human, Maus

Hintergrundinformationen

RAB 31, also named as RAB22b, belongs to small GTP-binding proteins of the RAB family. Rab31 localizes in the trans-Golgi network (TGN) and endosomes. It is required for transport of mannose 6-phosphate receptors (MPRs) from the trans-Golgi network (TGN) to endosomes. This antibody can bind RAB31 specifically, and not react RAB22a.

Lagerung

Lagerungsbedingungen:

Bei -20°C lagern. Nach dem Versand ein Jahr lang stabil

Lagerungspuffer:

PBS mit 0.02% Natriumazid und 50% Glycerin pH 7.3.

Aliquotieren ist nicht notwendig bei -20°C Lagerung

*** 20ul-Größen enthalten 0.1% BSA

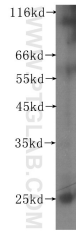
For technical support and original validation data for this product please contact:

T: 1 (888) 4PTGLAB (1-888-478-4522) (toll free
in USA), or 1(312) 455-8498 (outside USA)

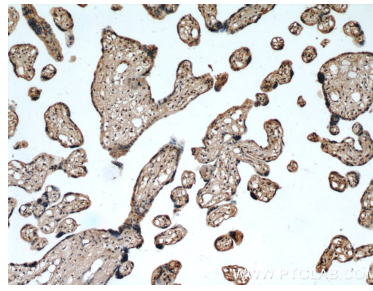
E: proteintech@ptglab.com
W: ptglab.com

This product is exclusively available under Proteintech Group brand and is not available to purchase from any other manufacturer.

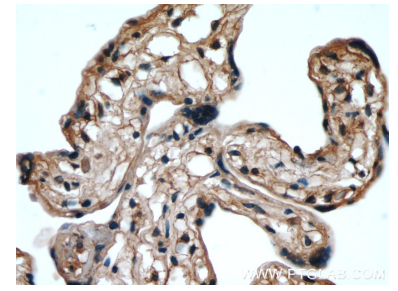
Ausgewählte Validierungsdaten



mouse colon tissue were subjected to SDS PAGE followed by western blot with 60146-1-Ig (RAB31-specific antibody) at dilution of 1:200 incubated at room temperature for 1.5 hours.



Immunohistochemical analysis of paraffin-embedded human placenta using 60146-1-Ig(RAB31-specific antibody) at dilution of 1:50 (under 10x lens).



Immunohistochemical analysis of paraffin-embedded human placenta using 60146-1-Ig(RAB31-specific antibody) at dilution of 1:50 (under 40x lens).