

Nur für Forschungszwecke

CUL4B Monoklonaler Antikörper

Katalog-Nr.:60151-1-Ig

Vorgestelltes Produkt

5 Publikationen



Allgemeine Informationen

Katalog-Nr.:

60151-1-Ig

Größe:

150ul, Konzentration: 2100 µg/ml von 8450

Nanodrop und 1000 µg/ml durch die Bradford-Methode mit BSA als Standard;

Wirt:

Maus

Isotyp:

IgG1

Immunogen Katalognummer:

AG3563

GenBank-Zugangsnummer:

BC036216

GeneID (NCBI):

von 8450

Vollständiger Name:

cullin 4B

Berechnete Masse:

913 aa, 104 kDa

Beobachtete Masse:

102 kDa

Reinigungsmethode:

Caprylsäure/Ammoniumsulfat-Präzipitation

CloneNo.:

4E10B10

Empfohlene Verdünnungen:

WB 1:1000-1:4000

IHC 1:50-1:500

Anwendungen

Geprüfte Anwendungen:

IHC, WB, ELISA

In Publikationen genannte Anwendungen:

IHC, WB

Getestete Reaktivität:

Human, Ratte

Zitierte Arten:

Human, Maus

Hinweis-IHC: Antigendemaskierung mit TE-Puffer pH 9,0 empfohlen. (*) Wahlweise kann die Antigendemaskierung auch mit Citratpuffer pH 6,0 erfolgen.

Positivkontrollen:

WB: HeLa-Zellen, HEK-293-Zellen, ROS1728-Zellen

IHC: humanes Gliomgewebe,

Hintergrundinformationen

Cullin-RING ligases (CRLs) complexes participate in the regulation of diverse cellular processes, including cell cycle progression, transcription, signal transduction and development (PMID: 21816341)(PMID: 21554755). Serving as the scaffold protein, cullins are crucial for the assembly of ligase complexes, which recognize and target various substrates for proteasomal degradation. Two cullin 4 (CUL4) proteins, CUL4A (87 kDa) and CUL4B(104 kDa), are two members in cullin family with 83% of identity. Mutations in human CUL4B are one of the major causes of X-linked mental retardation. Cul4b knockout mice demonstrated that CUL4B is indispensable for embryonic development in the mouse (PMID: 22606329).

Bemerkenswerte Veröffentlichungen

Verfasser	Pubmed ID	Journal	Anwendung
Ziling Fang	30483755	Int J Oncol	
Min Zhong	34153655	Pathol Res Pract	IHC, WB
Alice Meroni	36490343	Sci Adv	WB

Lagerung

Lagerungsbedingungen:

Bei -20°C lagern. Nach dem Versand ein Jahr lang stabil

Lagerungspuffer:

PBS mit 0.02% Natriumazid und 50% Glycerin pH 7.3.

Aliquotieren ist nicht notwendig bei -20°C Lagerung

*** 20ul-Größen enthalten 0.1% BSA

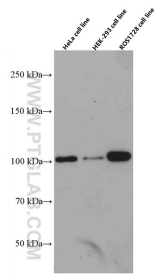
For technical support and original validation data for this product please contact:

T: 1 (888) 4PTGLAB (1-888-478-4522) (toll free in USA), or 1(312) 455-8498 (outside USA)

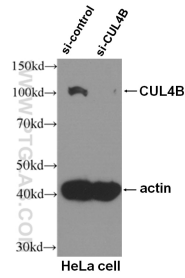
E: proteintech@ptglab.com
W: ptglab.com

This product is exclusively available under Proteintech Group brand and is not available to purchase from any other manufacturer.

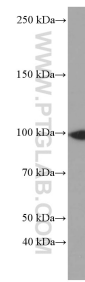
Ausgewählte Validierungsdaten



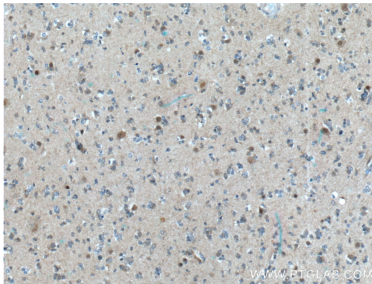
various lysates were subjected to SDS PAGE followed by western blot with 60151-1-Ig (CUL4B antibody) at dilution of 1:3000 incubated at room temperature for 1.5 hours.



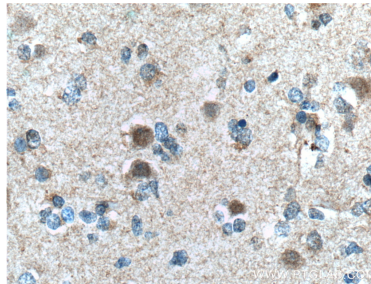
WB result of CUL4B antibody (60151-1-Ig, 1:500) with si-Control and si-CUL4B transfected HeLa cells.



HeLa cells were subjected to SDS PAGE followed by western blot with 60151-1-Ig (CUL4B Antibody) at dilution of 1:2000 incubated at room temperature for 1.5 hours.



Immunohistochemical analysis of paraffin-embedded human gliomas tissue slide using 60151-1-Ig (CUL4B Antibody) at dilution of 1:100 (under 10x lens). Heat mediated antigen retrieval with Tris-EDTA buffer (pH 9.0).



Immunohistochemical analysis of paraffin-embedded human gliomas tissue slide using 60151-1-Ig (CUL4B Antibody) at dilution of 1:100 (under 40x lens). Heat mediated antigen retrieval with Tris-EDTA buffer (pH 9.0).