

Nur für Forschungszwecke

SMN (Human, Mouse, Rat) Monoklonaler Antikörper



Katalog-Nr.: 60154-2-Ig

Vorgestelltes Produkt

Allgemeine Informationen

Katalog-Nr.:
60154-2-Ig

Größe:
150ul, Konzentration: 1800 µg/ml von 6607
Nanodrop und 1000 µg/ml durch die
Bradford-Methode mit BSA als
Standard;

Wirt:
Maus

Isotyp:
IgG2b

Immunogen Katalognummer:
AG14333

GenBank-Zugangsnummer:
BC000908

GeneID (NCBI):
von 6607

Vollständiger Name:
survival of motor neuron 2,
centromeric

Berechnete Masse:
282 aa, 30 kDa

Beobachtete Masse:
38 kDa

Reinigungsmethode:
Protein-A-Reinigung

CloneNo.:
3C10B5

Empfohlene Verdünnungen:
WB 1:5000-1:50000
IHC 1:500-1:2000
IF 1:400-1:1600

Anwendungen

Geprüfte Anwendungen:

IF, IHC, WB, ELISA

Getestete Reaktivität:

Human, Maus, Ratte

Hinweis-IHC: Antigendemaskierung mit TE-Puffer pH 9,0 empfohlen. (*) Wahlweise kann die Antigendemaskierung auch mit Citratpuffer pH 6,0 erfolgen.

Positivkontrollen:

WB: HepG2-Zellen, A375-Zellen, HEK-293-Zellen, HeLa-Zellen, Jurkat-Zellen, MOLT-4-Zellen, Raji-Zellen, T-47D-Zellen

IHC: Mauslebergewebe, Maushirngewebe

IF: HepG2-Zellen,

Hintergrundinformationen

The survival of motor neurons (SMN) genes are the disease genes of spinal muscular atrophy (SMA), a common motor neuron degenerative disease. The level of SMN protein correlates with phenotypic severity of SMA. SMA patients lack a functional SMN1 gene, but they possess an intact SMN2 gene, which though nearly identical to SMN1, is only partially functional, because a large majority of SMN2 transcripts lack exon 7, resulting in production of a truncated, less stable SMN protein. This antibody 60154-2-Ig can recognize human, mouse and rat SMN gene.

Lagerung

Lagerungsbedingungen:

Bei -20°C lagern. Nach dem Versand ein Jahr lang stabil

Lagerungspuffer:

PBS mit 0.02% Natriumazid und 50% Glycerin pH 7.3.

Aliquotieren ist nicht notwendig bei -20°C Lagerung

*** 20ul-Größen enthalten 0.1% BSA

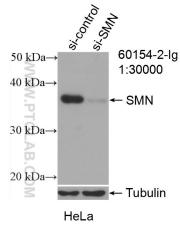
For technical support and original validation data for this product please contact:

T: 1 (888) 4PTGLAB (1-888-478-4522) (toll free
in USA), or 1(312) 455-8498 (outside USA)

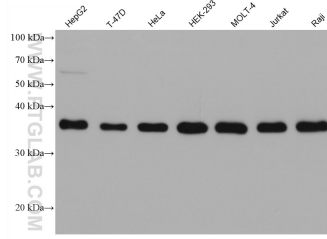
E: proteintech@ptglab.com
W: ptglab.com

This product is exclusively available under Proteintech Group brand and is not available to purchase from any other manufacturer.

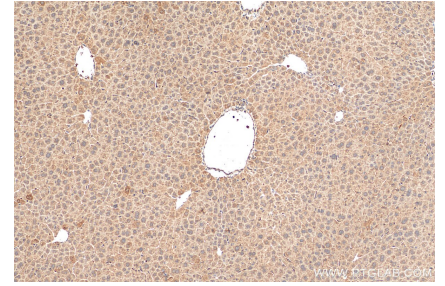
Ausgewählte Validierungsdaten



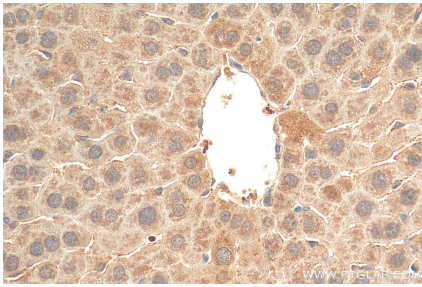
WB result of SMN (Human,Mouse,Rat) antibody (60154-2-Ig; 1:30000; incubated at room temperature for 1.5 hours) with sh-Control and sh-SMN (Human,Mouse,Rat) transfected HeLa cells.



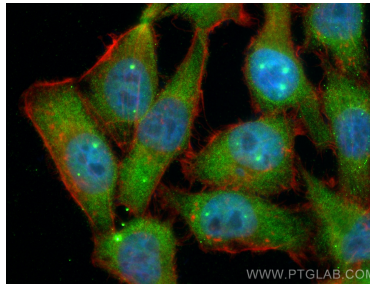
Various lysates were subjected to SDS PAGE followed by western blot with 60154-2-Ig (SMN (Human,Mouse,Rat) antibody) at dilution of 1:10000 incubated at room temperature for 1.5 hours.



Immunohistochemical analysis of paraffin-embedded mouse liver tissue slide using 60154-2-Ig (SMN (Human,Mouse,Rat) antibody) at dilution of 1:1000 (under 10x lens). Heat mediated antigen retrieval with Tris-EDTA buffer (pH 9.0).



Immunohistochemical analysis of paraffin-embedded mouse liver tissue slide using 60154-2-Ig (SMN (Human,Mouse,Rat) antibody) at dilution of 1:1000 (under 40x lens). Heat mediated antigen retrieval with Tris-EDTA buffer (pH 9.0).



Immunofluorescent analysis of (4% PFA) fixed HepG2 cells using SMN (Human,Mouse,Rat) antibody (60154-2-Ig, Clone: 3C10B5) at dilution of 1:800 and CoraLite@488-Conjugated AffiniPure Goat Anti-Mouse IgG(H+L), CL594-Phalloidin (red).