

Nur für Forschungszwecke

EPHA1-specific Monoklonaler Antikörper

Katalog-Nr.:60155-2-Ig



Allgemeine Informationen

Katalog-Nr.: 60155-2-Ig	GenBank-Zugangsnummer: BC130291	Reinigungsmethode: Caprylsäure/Ammoniumsulfat-Präzipitation
Größe: 150ul , Konzentration: 1100 µg/ml von2041 Nanodrop und 1000 µg/ml durch die Bradford-Methode mit BSA als Standard;	GeneID (NCBI): Vollständiger Name: EPH receptor A1	CloneNo.: 1B7C3
Wirt: Maus	Berechnete Masse: 108 kDa	Empfohlene Verdünnungen: WB 1:1000-1:6000 IHC 1:50-1:500
Isotyp: IgG1	Beobachtete Masse: 108 kDa	

Anwendungen

Geprüfte Anwendungen:

IHC, WB,ELISA

Getestete Reaktivität:

Human

Hinweis-IHC: Antigenmaskierung mit TE-Puffer pH 9,0 empfohlen. (*) Wahlweise kann die Antigenmaskierung auch mit Citratpuffer pH 6,0 erfolgen.

Positivkontrollen:

WB : HeLa-Zellen, COLO 320-Zellen, HepG2-Zellen

IHC : humanes Mammakarzinomgewebe, humanes Leberkarzinomgewebe, humanes Magenkrebsgewebe

Hintergrundinformationen

EPHA1, also named as EPH, EPHT and EPHT1, belongs to ephrin receptor subfamily of the protein-tyrosine kinase family. EPH and EPH-related receptors have been implicated in mediating developmental events, particularly in the nervous system. Receptors in the EPH subfamily typically have a single kinase domain and an extracellular region containing a Cys-rich domain and 2 fibronectin type III repeats. Ligands in the ephrin-A subclass, including the prototype family member ephrin-A1 (B61), are membrane associated through glycosylphosphatidyl-inositol linkages, whereas ephrin-B subclass consists of ligands with transmembrane domains. The general role of the Eph family is in mediating repulsive cell-cell interaction.

Lagerung

Lagerungsbedingungen:

Bei -20°C lagern. Nach dem Versand ein Jahr lang stabil

Lagerungspuffer:

PBS mit 0.02% Natriumazid und 50% Glycerin pH 7.3.

Aliquotieren ist nicht notwendig bei -20°C Lagerung

*** 20ul-Größen enthalten 0.1% BSA

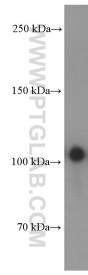
For technical support and original validation data for this product please contact:

T: 1 (888) 4PTGLAB (1-888-478-4522) (toll free in USA), or 1(312) 455-8498 (outside USA)

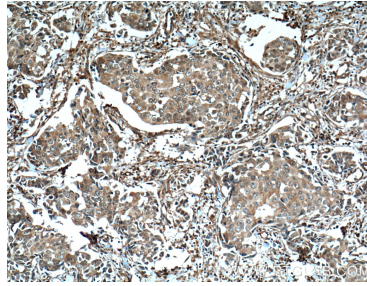
E: proteintech@ptglab.com
W: ptglab.com

This product is exclusively available under Proteintech Group brand and is not available to purchase from any other manufacturer.

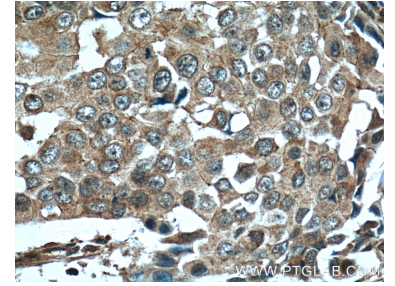
Ausgewählte Validierungsdaten



HeLa cells were subjected to SDS PAGE followed by western blot with 60155-2-Ig (EPA1-specific antibody at dilution of 1:3000 incubated at room temperature for 1.5 hours.



Immunohistochemical analysis of paraffin-embedded human breast cancer tissue slide using 60155-2-Ig (EPA1-specific antibody at dilution of 1:200 (under 10x lens). Heat mediated antigen retrieval with Tris-EDTA buffer (pH 9.0).



Immunohistochemical analysis of paraffin-embedded human breast cancer tissue slide using 60155-2-Ig (EPA1-specific antibody at dilution of 1:200 (under 40x lens). Heat mediated antigen retrieval with Tris-EDTA buffer (pH 9.0).