

## Allgemeine Informationen

<b>Katalog-Nr.:</b> 60162-1-Ig	<b>GenBank-Zugangsnummer:</b> BC013200	<b>Reinigungsmethode:</b> Protein-G-Reinigung
<b>Größe:</b> 150ul , Konzentration: 1300 µg/ml von3932 Nanodrop und 1000 µg/ml durch die Bradford-Methode mit BSA als Standard;	<b>GeneID (NCBI):</b> 3932	<b>CloneNo.:</b> 2D10C2
<b>Wirt:</b> Maus	<b>Vollständiger Name:</b> Lymphocyte-specific protein tyrosine kinase	<b>Empfohlene Verdünnungen:</b> WB 1:1000-1:6000 IHC 1:500-1:2000 IF 1:200-1:800
<b>Isotyp:</b> IgG1	<b>Berechnete Masse:</b> 539 aa, 56 kDa	
<b>Immunogen Katalognummer:</b> AG7694	<b>Beobachtete Masse:</b> 50-60 kDa	

## Anwendungen

<b>Geprüfte Anwendungen:</b> IF, IHC, WB,ELISA	<b>Positivkontrollen:</b> WB : Hausschwein-Thymusgewebe, Ramos-Zellen, Ratten-Thymusgewebe
<b>In Publikationen genannte Anwendungen:</b> IHC, WB	<b>IHC :</b> humanes Tonsillitisgewebe, humanes Lymphomgewebe
<b>Getestete Reaktivität:</b> Hausschwein, Human, Ratte	<b>IF :</b> humanes Tonsillitisgewebe,
<b>Zitierte Arten:</b> Human	

**Hinweis-IHC: Antigenmaskierung mit TE-Puffer pH 9,0 empfohlen. (\*) Wahlweise kann die Antigenmaskierung auch mit Citratpuffer pH 6,0 erfolgen.**

## Hintergrundinformationen

LCK(Lymphocyte cell-specific protein-tyrosine kinase) is also named as LSK,p56-LCK and a nonreceptor protein-tyrosine kinase of the SRC oncogene family that is involved in transduction of T-cell receptor-mediated activation.It is implicated in the control of lymphocyte growth by virtue of its overexpression in some lymphoid malignancies and its transforming activity in heterologous systems(PMID:2784463).It has 3 isoforms produced by alternative splicing.

## Bemerkenswerte Veröffentlichungen

Verfasser	Pubmed ID	Journal	Anwendung
Chao Wang	35264874	Int J Gen Med	WB,IHC

## Lagerung

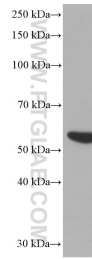
**Lagerungsbedingungen:**  
Bei -20°C lagern. Nach dem Versand ein Jahr lang stabil  
**Lagerungspuffer:**  
PBS mit 0.02% Natriumazid und 50% Glycerin pH 7.3.  
Aliquotieren ist nicht notwendig bei -20°C Lagerung

**\*\*\* 20ul-Größen enthalten 0.1% BSA**

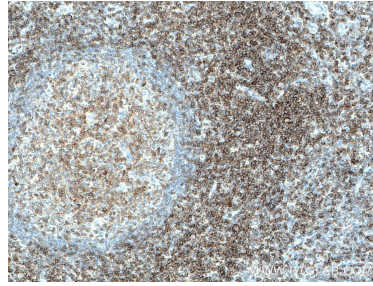
For technical support and original validation data for this product please contact:  
T: 1 (888) 4PTGLAB (1-888-478-4522) (toll free in USA), or 1(312) 455-8498 (outside USA)  
E: [proteintech@ptglab.com](mailto:proteintech@ptglab.com)  
W: [ptglab.com](http://ptglab.com)

**This product is exclusively available under Proteintech Group brand and is not available to purchase from any other manufacturer.**

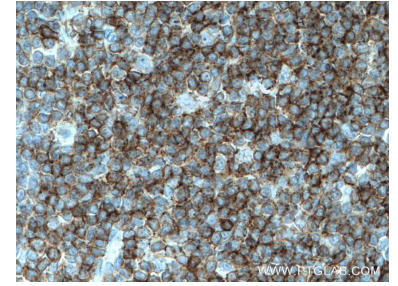
## Ausgewählte Validierungsdaten



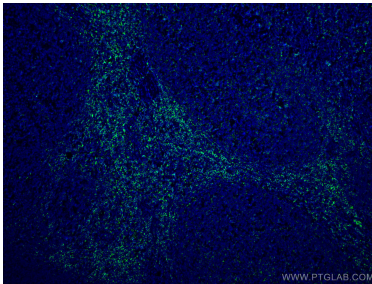
pig thymus tissue were subjected to SDS PAGE followed by western blot with 60162-1-Ig (LCK antibody) at dilution of 1:3000 incubated at room temperature for 1.5 hours.



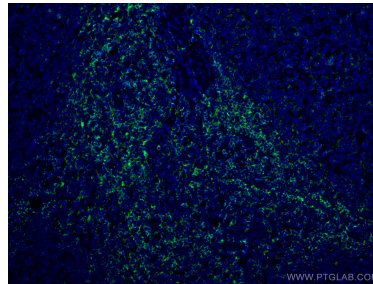
Immunohistochemical analysis of paraffin-embedded human tonsillitis tissue slide using 60162-1-Ig (LCK antibody) at dilution of 1:1000 (under 10x lens. Heat mediated antigen retrieval with Tris-EDTA buffer (pH 9.0).



Immunohistochemical analysis of paraffin-embedded human tonsillitis tissue slide using 60162-1-Ig (LCK antibody) at dilution of 1:1000 (under 40x lens. Heat mediated antigen retrieval with Tris-EDTA buffer (pH 9.0).



Immunofluorescent analysis of (4% PFA) fixed human tonsillitis tissue using LCK antibody (60162-1-Ig, Clone: 2D10C2 ) at dilution of 1:400 and CoraLite®488-Conjugated AffiniPure Goat Anti-Mouse IgG(H+L).



Immunofluorescent analysis of (4% PFA) fixed human tonsillitis tissue using LCK antibody (60162-1-Ig, Clone: 2D10C2 ) at dilution of 1:400 and CoraLite®488-Conjugated AffiniPure Goat Anti-Mouse IgG(H+L).