

Nur für Forschungszwecke

ALDH1A1 Monoklonaler Antikörper



Katalog-Nr.:60171-1-Ig

Vorgestelltes Produkt

7 Publikationen

Allgemeine Informationen

Katalog-Nr.: 60171-1-Ig	GenBank-Zugangsnummer: BC001505	Reinigungsmethode: Protein-A-Reinigung
Größe: 150ul , Konzentration: 1000 µg/ml von216 Nanodrop;	GeneID (NCBI): Vollständiger Name: aldehyde dehydrogenase 1 family, member A1	CloneNo.: 1A10A2
Wirt: Maus	Berechnete Masse: 501 aa, 55 kDa	Empfohlene Verdünnungen: WB 1:500-1:1000 IHC 1:50-1:500 IF 1:400-1:1600
Isotyp: IgG1	Beobachtete Masse: 52 kDa	
Immunogen Katalognummer: AG8551		

Anwendungen

Geprüfte Anwendungen:

FC, IF, IHC, WB, ELISA

In Publikationen genannte Anwendungen:

IF, IHC, IP, WB

Getestete Reaktivität:

Hausschwein, Human, Maus, Ratte

Zitierte Arten:

Human, Maus

Hinweis-IHC: Antigenmaskierung mit TE-Puffer pH 9,0 empfohlen. (*) Wahlweise kann die Antigenmaskierung auch mit Citratpuffer pH 6,0 erfolgen.

Positivkontrollen:

WB : MCF7 cell, A549-Zellen, Hausschwein-Lebergewebe, HepG2-Zellen, HuH-7-Zellen, K-562-Zellen, MCF-7-Zellen, Rattenlebergewebe

IHC : humanes Hirngewebe,

IF : HeLa-Zellen, A431-Zellen, Maus-Kolongewebe

Hintergrundinformationen

ALDH1A1(Aldehyde dehydrogenase family 1 member A1), also named as ALDC, ALDH1 and PUMB1, belongs to the aldehyde dehydrogenase family. The ALDH1A1 gene encodes a liver cytosolic isoform of acetaldehyde dehydrogenase, an enzyme involved in the major pathway of alcohol metabolism after alcohol dehydrogenase. ALDH1A1 plays a critical role in protection against oxidative stress-induced cytotoxicity in lens epithelial cells(PMID:19296407). And it is important for multiple biological activities including drug resistance, cell differentiation, and oxidative stress response(PMID:19025616). As a novel cancer stem cell marker, ALDH1A1 can be used for tumors whose corresponding normal tissues express ALDH1A1 in relatively restricted or limited levels such as breast, lung, ovarian or colon cancer(PMID: 20422001).

Bemerkenswerte Veröffentlichungen

Verfasser	Pubmed ID	Journal	Anwendung
Ting Tang	33173989	Mol Med Rep	WB
Haihua Wang	36484016	J Cancer	WB,IHC
Rui-Qi Wang	31139022	Cancer Cell Int	WB

Lagerung

Lagerungsbedingungen:

Bei -20°C lagern. Nach dem Versand ein Jahr lang stabil

Lagerungspuffer:

PBS mit 0.02% Natriumazid und 50% Glycerin pH 7.3.

Aliquotieren ist nicht notwendig bei -20°C Lagerung

*** 20ul-Größen enthalten 0.1% BSA

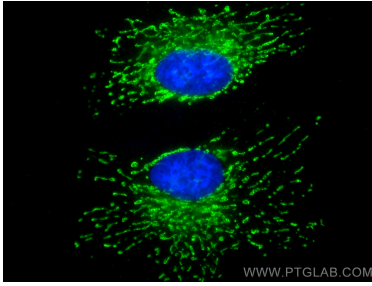
For technical support and original validation data for this product please contact:

T: 1 (888) 4PTGLAB (1-888-478-4522) (toll free in USA), or 1(312) 455-8498 (outside USA)

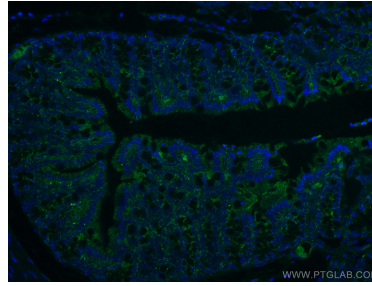
E: proteintech@ptglab.com
W: ptglab.com

This product is exclusively available under Proteintech Group brand and is not available to purchase from any other manufacturer.

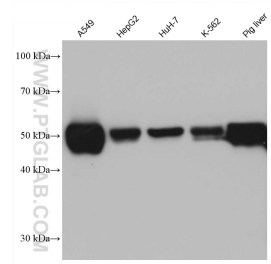
Ausgewählte Validierungsdaten



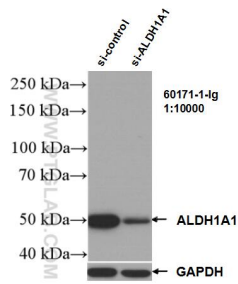
Immunofluorescent analysis of (4% PFA) fixed HeLa cells using ALDH1A1 antibody (60171-1-Ig, Clone: 1A10A2) at dilution of 1:800 and CoraLite®488-Conjugated AffiniPure Goat Anti-Mouse IgG(H+L).



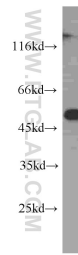
Immunofluorescent analysis of (4% PFA) fixed mouse colon tissue using 60171-1-Ig (ALDH1A1 antibody), at dilution of 1:100 and CoraLite®488-Conjugated AffiniPure Goat Anti-Mouse IgG(H+L).



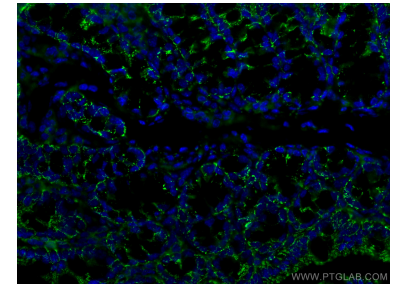
Various lysates were subjected to SDS PAGE followed by western blot with 60171-1-Ig (ALDH1A1 antibody) at dilution of 1:20000 incubated at room temperature for 1.5 hours.



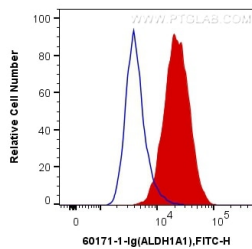
WB result of ALDH1A1 antibody (60171-1-Ig; 1:10000; incubated at room temperature for 1.5 hours) with sh-Control and sh-ALDH1A1 transfected K-562 cells.



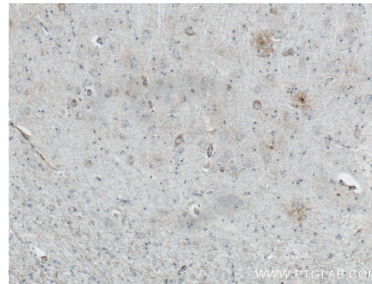
MCF7 cells were subjected to SDS PAGE followed by western blot with 60171-1-Ig (ALDH1A1 antibody) at dilution of 1:500 incubated at room temperature for 1.5 hours.



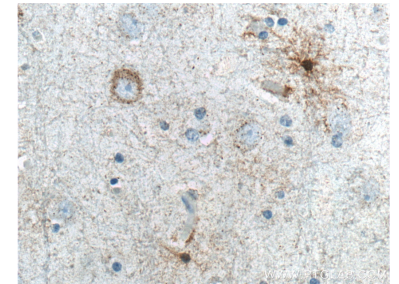
Immunofluorescent analysis of (4% PFA) fixed mouse colon tissue using 60171-1-Ig (ALDH1A1 antibody), at dilution of 1:100 and CoraLite®488-Conjugated AffiniPure Goat Anti-Mouse IgG(H+L).



1x10⁶ HepG2 cells were intracellularly stained with 0.2 ug Anti-Human ALDH1A1 (60171-1-Ig, Clone:1A10A2) and CoraLite®488-Conjugated AffiniPure Goat Anti-Mouse IgG(H+L) at dilution 1:1000 (red), or 0.2 ug Control Antibody. Cells were fixed with 4% PFA and permeabilized with Flow Cytometry Perm Buffer (PF00011-C).



Immunohistochemical analysis of paraffin-embedded human brain tissue slide using 60171-1-Ig (ALDH1A1 Antibody) at dilution of 1:200 (under 10x lens). Heat mediated antigen retrieved with Sodium Citrate buffer (pH 6.0).



Immunohistochemical analysis of paraffin-embedded human brain tissue slide using 60171-1-Ig (ALDH1A1 Antibody) at dilution of 1:200 (under 40x lens). Heat mediated antigen retrieved with Sodium Citrate buffer (pH 6.0).