

Allgemeine Informationen

Katalog-Nr.: 60176-1-Ig	GenBank-Zugangsnummer: BC007460	Reinigungsmethode: Protein-A-Reinigung
Größe: 150ul , Konzentration: 1300 µg/ml von55 Nanodrop und 1000 µg/ml durch die Bradford-Methode mit BSA als Standard;	GeneID (NCBI): 55	CloneNo.: 1G2C9
Wirt: Maus	Vollständiger Name: acid phosphatase, prostate	Empfohlene Verdünnungen: WB 1:200-1:1000 IHC 1:20-1:200 IF 1:200-1:800
Isotyp: IgG2a	Berechnete Masse: 418 aa, 48 kDa	
Immunogen Katalognummer: AG8578	Beobachtete Masse: 45-50 kDa	

Anwendungen

Geprüfte Anwendungen: IF, IHC, WB, ELISA	Positivkontrollen: WB : humanes Hodengewebe, IHC : humanes Prostatahyperplasie-Gewebe, IF : humanes Prostatakarcinomgewebe,
In Publikationen genannte Anwendungen: WB	
Getestete Reaktivität: Human, Ratte	
Zitierte Arten: Human	
Hinweis-IHC: Antigenmaskierung mit TE-Puffer pH 9,0 empfohlen. (*) Wahlweise kann die Antigenmaskierung auch mit Citratpuffer pH 6,0 erfolgen.	

Hintergrundinformationen

ACPP is also named as PAP(prostatic acid phosphatase),5'-nucleotidase,thiamine monophosphatas and Belongs to the histidine acid phosphatase family.This enzyme is a homodimeric glycoprotein with a subunit molecular mass of 50 kDa and is an androgen-stimulated secretory product of the human prostate gland(PMID:8132635).It is also a non-specific phosphatase and has been implicated in the progression of prostate cancer, which inactivates LPA in human seminal plasma(PMID:15280042). This protein has three glycosylation sites(PMID:10639192;12525165).

Bemerkenswerte Veröffentlichungen

Verfasser	Pubmed ID	Journal	Anwendung
Chong Wang	35185790	Front Endocrinol (Lausanne)	WB

Lagerung

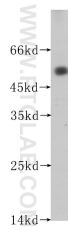
Lagerungsbedingungen:
Bei -20°C lagern. Nach dem Versand ein Jahr lang stabil
Lagerungspuffer:
PBS mit 0.02% Natriumazid und 50% Glycerin pH 7.3.
Aliquotieren ist nicht notwendig bei -20°C Lagerung

***** 20ul-Größen enthalten 0.1% BSA**

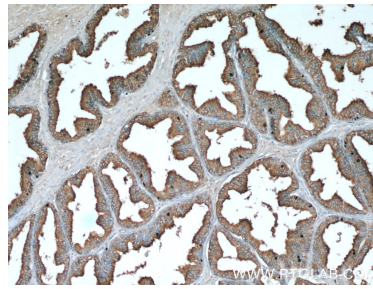
For technical support and original validation data for this product please contact:
T: 1 (888) 4PTGLAB (1-888-478-4522) (toll free in USA), or 1(312) 455-8498 (outside USA)
E: proteintech@ptglab.com
W: ptglab.com

This product is exclusively available under Proteintech Group brand and is not available to purchase from any other manufacturer.

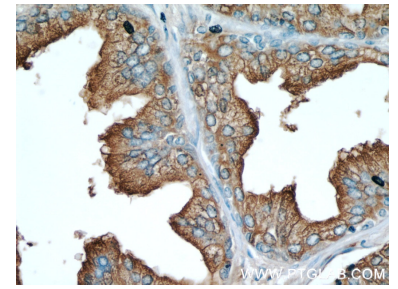
Ausgewählte Validierungsdaten



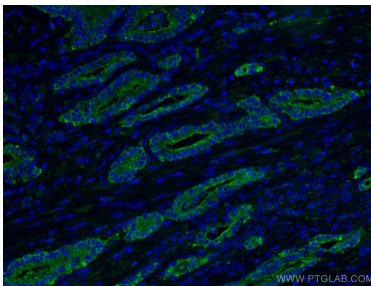
human testis tissue were subjected to SDS PAGE followed by western blot with 60176-1-Ig (ACPP antibody) at dilution of 1:400 incubated at room temperature for 1.5 hours.



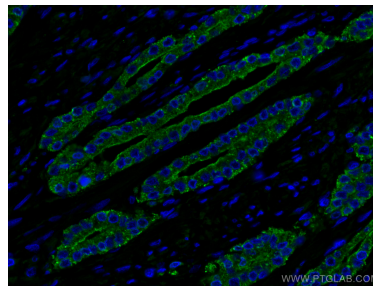
Immunohistochemical analysis of paraffin-embedded human prostate hyperplasia using 60176-1-Ig(ACPP antibody) at dilution of 1:50 (under 10x lens).



Immunohistochemical analysis of paraffin-embedded human prostate hyperplasia using 60176-1-Ig(ACPP antibody) at dilution of 1:50 (under 40x lens).



Immunofluorescent analysis of (4% PFA) fixed human prostate cancer tissue using ACPP antibody (60176-1-Ig, Clone: 1G2C9) at dilution of 1:400 and CoraLite®488-Conjugated AffiniPure Goat Anti-Mouse IgG(H+L).



Immunofluorescent analysis of (4% PFA) fixed human prostate cancer tissue using ACPP antibody (60176-1-Ig, Clone: 1G2C9) at dilution of 1:400 and CoraLite®488-Conjugated AffiniPure Goat Anti-Mouse IgG(H+L).