

Nur für Forschungszwecke

Cyclin D1 Monoklonaler Antikörper

Katalog-Nr.: 60186-1-Ig

Vorgestelltes Produkt

583 Publikationen



Allgemeine Informationen

Katalog-Nr.: 60186-1-Ig	GenBank-Zugangsnummer: BC000076	Reinigungsmethode: Protein-A-Reinigung
Größe: 150ul, Konzentration: 2000 µg/ml von 595 Nanodrop;	GeneID (NCBI): cyclin D1	CloneNo.: 2G3G5
Wirt: Maus	Vollständiger Name: cyclin D1	Empfohlene Verdünnungen: WB 1:5000-1:50000
Isotyp: IgG2b	Berechnete Masse: 295 aa, 34 kDa	
Immunogen Katalognummer: AG0689	Beobachtete Masse: 34 kDa	

Anwendungen

Geprüfte Anwendungen:

FC, WB, ELISA

In Publikationen genannte Anwendungen:

IF, IP, WB

Getestete Reaktivität:

Human, Maus, Ratte

Zitierte Arten:

Hamster, Human, Maus, Rind, Zebrafisch

Positivkontrollen:

WB: HCT 116-Zellen, A431-Zellen, A549-Zellen, HeLa-Zellen, HepG2-Zellen, MCF-7-Zellen, NIH/3T3-Zellen, PC-12-Zellen, RAW 264.7-Zellen, SH-SY5Y-Zellen, SW 1990-Zellen

Hintergrundinformationen

CCND1 (cyclin D1), also known as PRAD1 or BCL1, belongs to the highly conserved cyclin family, whose members are characterized by a dramatic periodicity in protein abundance throughout the cell cycle. CCND1 forms a complex with and functions as a regulatory subunit of CDK4 or CDK6, whose activity is required for cell cycle G1/S transition. The CCND1 gene, located on 11q13 has been reported to be overexpressed in mantle cell lymphoma (MCL) due to the chromosomal translocation. CCND1 has been shown to interact with tumor suppressor protein Rb and the expression of this gene is regulated positively by Rb. Over-expression of CCND1 is known to correlate with the early onset of cancer and risk of tumor progression and metastasis.

Bemerkenswerte Veröffentlichungen

Verfasser	Pubmed ID	Journal	Anwendung
Ji Xing	36230734	Cancers (Basel)	WB
Yong-Li Zhang	34679694	Antioxidants (Basel)	WB
Wei-Liang Ye	26419507	Sci Rep	WB

Lagerung

Lagerungsbedingungen:

Bei -20°C lagern. Nach dem Versand ein Jahr lang stabil

Lagerungspuffer:

PBS mit 0.02% Natriumazid und 50% Glycerin pH 7.3.

Aliquotieren ist nicht notwendig bei -20°C Lagerung

*** 20ul-Größen enthalten 0.1% BSA

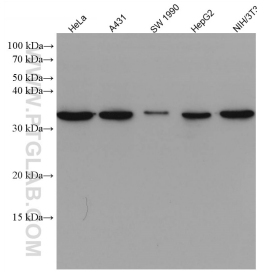
For technical support and original validation data for this product please contact:

T: 1 (888) 4PTGLAB (1-888-478-4522) (toll free in USA), or 1(312) 455-8498 (outside USA)

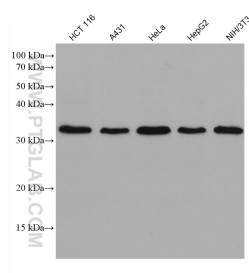
E: proteintech@ptglab.com
W: ptglab.com

This product is exclusively available under Proteintech Group brand and is not available to purchase from any other manufacturer.

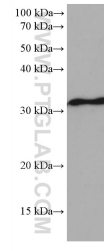
Ausgewählte Validierungsdaten



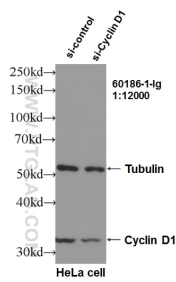
Various lysates were subjected to SDS PAGE followed by western blot with 60186-1-Ig (Cyclin D1 antibody) at dilution of 1:40000 incubated at room temperature for 1.5 hours.



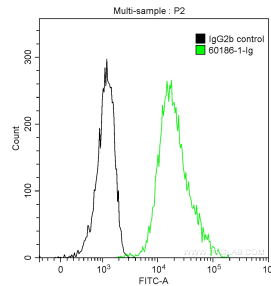
Various lysates were subjected to SDS PAGE followed by western blot with 60186-1-Ig (Cyclin D1 antibody) at dilution of 1:20000 incubated at room temperature for 1.5 hours.



RAW 264.7 cells were subjected to SDS PAGE followed by western blot with 60186-1-Ig (Cyclin D1 antibody) at dilution of 1:20000 incubated at room temperature for 1.5 hours.



WB result of Cyclin D1 antibody (60186-1-Ig, 1:12,000) with si-Control and si-Cyclin D1 transfected HeLa cells.



1x10⁶ SH-SY5Y cells were stained with 0.2 ug Anti-Human Cyclin D1 (60186-1-Ig, Clone:2G3G5) and CoraLite®488-Conjugated AffiniPure Goat Anti-Mouse IgG(H+L) at dilution 1:1000 (green), and 0.2 ug Control Antibody. Cells were fixed with 90% MeOH.