

Nur für Forschungszwecke

# NF-L Monoklonaler Antikörper

Katalog-Nr.:60189-1-Ig



## Allgemeine Informationen

<b>Katalog-Nr.:</b> 60189-1-Ig	<b>GenBank-Zugangsnummer:</b> BC039237	<b>Reinigungsmethode:</b> Protein-A-Reinigung
<b>Größe:</b> 150ul , Konzentration: 1435 µg/ml von4747 Nanodrop;	<b>GeneID (NCBI):</b> 4747	<b>CloneNo.:</b> 5C12G4
<b>Wirt:</b> Maus	<b>Vollständiger Name:</b> neurofilament, light polypeptide	<b>Empfohlene Verdünnungen:</b> WB 1:20000-1:100000 IHC 1:250-1:1000 IF 1:50-1:500
<b>Isotyp:</b> IgG1	<b>Berechnete Masse:</b> 543 aa, 62 kDa	
<b>Immunogen Katalognummer:</b> AG15178	<b>Beobachtete Masse:</b> 65 kDa	

## Anwendungen

### Geprüfte Anwendungen:

FC, IF, IHC, WB, ELISA

### Getestete Reaktivität:

Hausschwein, Human, Maus, Ratte

**Hinweis-IHC: Antigenmaskierung mit TE-Puffer pH 9,0 empfohlen. (\*) Wahlweise kann die Antigenmaskierung auch mit Citratpuffer pH 6,0 erfolgen.**

### Positivkontrollen:

**WB :** PC-12-Zellen, Hausschwein-Hirngewebe, humanes Hirngewebe, Maushirngewebe, Rattenhirngewebe

**IHC :** Rattenhirngewebe, humanes Hirngewebe, Maushirngewebe

**IF :** Maushirngewebe, Rattenhirngewebe

## Hintergrundinformationen

NEFL, also named as NF68 and NF-L, belongs to the intermediate filament family. Neurofilaments are the 10 nm intermediate filaments found specifically in neurons. They are a major component of the cell's cytoskeleton, and provide support for normal axonal radial growth. Neurofilaments usually contain three intermediate filament proteins: L, M, and H, which are involved in the maintenance of neuronal caliber. The names given to the three major neurofilament subunits are based upon the apparent molecular weight of the mammalian subunits on SDS-PAGE: NF-L, 65-68 kDa; NF-M,145-160 kDa and NF-H, 200-220 kDa.This antibody is specific to NEFL

## Lagerung

### Lagerungsbedingungen:

Bei -20°C lagern. Nach dem Versand ein Jahr lang stabil

### Lagerungspuffer:

PBS mit 0.02% Natriumazid und 50% Glycerin pH 7.3.

Aliquotieren ist nicht notwendig bei -20°C Lagerung

**\*\*\* 20ul-Größen enthalten 0.1% BSA**

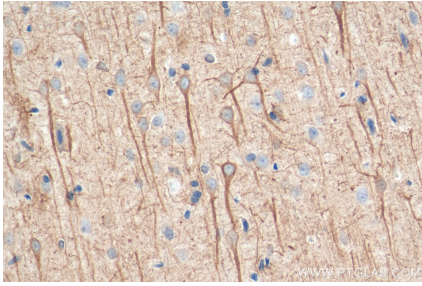
For technical support and original validation data for this product please contact:

T: 1 (888) 4PTGLAB (1-888-478-4522) (toll free in USA), or 1(312) 455-8498 (outside USA)

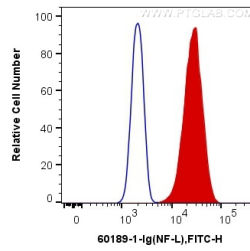
E: [proteintech@ptglab.com](mailto:proteintech@ptglab.com)  
W: [ptglab.com](http://ptglab.com)

**This product is exclusively available under Proteintech Group brand and is not available to purchase from any other manufacturer.**

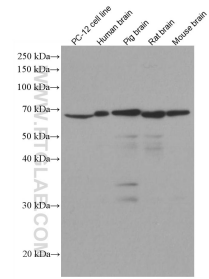
## Ausgewählte Validierungsdaten



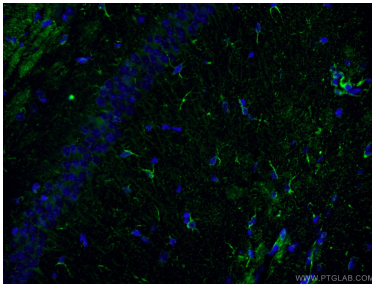
Immunohistochemical analysis of paraffin-embedded rat brain tissue slide using 60189-1-Ig (NF-L antibody) at dilution of 1:500 (under 40x lens). Heat mediated antigen retrieval with Tris-EDTA buffer (pH 9.0).



$1 \times 10^6$  PC-12 cells were intracellularly stained with 0.4  $\mu$ g Anti-Human NF-L (60189-1-Ig, Clone:5C12G4) and Coralite®488-Conjugated AffiniPure Goat Anti-Mouse IgG(H+L) at dilution 1:1000 (red), or 0.4  $\mu$ g Control Antibody. Cells were fixed with 4% PFA and permeabilized with Flow Cytometry Perm Buffer (PF00011-C).



Various lysates were subjected to SDS PAGE followed by western blot with 60189-1-Ig (NF-L antibody) at dilution of 1:100000 incubated at room temperature for 1.5 hours.



Immunofluorescent analysis of (4% PFA) fixed mouse brain tissue using 60189-1-Ig (NF-L antibody) at dilution of 1:50 and Alexa Fluor 488-conjugated AffiniPure Goat Anti-Mouse IgG(H+L).