

## Allgemeine Informationen

<b>Katalog-Nr.:</b> 60199-1-Ig	<b>GenBank-Zugangsnummer:</b> BC000627	<b>Reinigungsmethode:</b> Protein-A-Reinigung
<b>Größe:</b> 150ul , Konzentration: 1557 µg/ml von6774 Nanodrop und 1093 µg/ml durch die Bradford-Methode mit BSA als Standard;	<b>GeneID (NCBI):</b> 6774	<b>CloneNo.:</b> 3G2D12
<b>Wirt:</b> Maus	<b>Vollständiger Name:</b> signal transducer and activator of transcription 3 (acute-phase response factor)	<b>Empfohlene Verdünnungen:</b> WB 1:2000-1:20000 IP 0.5-4.0 ug für IP und 1:1000-1:4000 für WB
<b>Isotyp:</b> IgG2a	<b>Berechnete Masse:</b> 770 aa, 88 kDa	<b>IHC 1:50-1:500</b> <b>IF 1:50-1:500</b>
<b>Immunogen Katalognummer:</b> AG0360	<b>Beobachtete Masse:</b> 88 kDa	

## Anwendungen

<b>Geprüfte Anwendungen:</b> FC, IF, IHC, IP, WB, ELISA	<b>Positivkontrollen:</b>
<b>In Publikationen genannte Anwendungen:</b> IF, IHC, IP, WB	<b>WB :</b> HeLa-Zellen, HeLa
<b>Getestete Reaktivität:</b> Human, Maus, Ratte	<b>IP :</b> HeLa-Zellen,
<b>Zitierte Arten:</b> Human, Maus, Ratte, Zebrafisch	<b>IHC :</b> humanes Zervixkarzinomgewebe, humanes Endometriumkarzinomgewebe, humanes Herzgewebe, humanes Lebergewebe, humanes Lungenkarzinomgewebe, humanes Mammakarzinomgewebe
<b>Hinweis-IHC: Antigendemaskierung mit TE- Puffer pH 9,0 empfohlen. (*) Wahlweise kann die Antigendemaskierung auch mit Citratpuffer pH 6,0 erfolgen.</b>	<b>IF :</b> HepG2-Zellen,

## Hintergrundinformationen

Signal transducer and activator of transcription 3 (acute-phase response factor) (STAT3, synonyms: APRF, FLJ20882, MGC16063) is a member of the STAT protein family. In response to cytokines and growth factors, STAT family members are phosphorylated by the receptor associated kinases, and then form homo- or heterodimers that translocate to the cell nucleus where they act as transcription activators. STAT3 is activated through phosphorylation in response to various cytokines and growth factors including IFNs, EGF, IL5, IL6, HGF, LIF and BMP2. STAT3 mediates the expression of a variety of genes in response to cell stimuli, and thus plays a key role in many cellular processes such as cell growth and apoptosis. The small GTPase Rac1 has been shown to bind and regulate the activity of STAT3. This antibody is a mouse monoclonal antibody raised against residues near the N terminus of human STAT3. STAT3 exists three isoforms and the molecular weight of each isoform respectively is 83 kDa, 87 kDa and 88 kDa.

## Bemerkenswerte Veröffentlichungen

Verfasser	Pubmed ID	Journal	Anwendung
Wenbin Pei	34650433	Front Pharmacol	IF
Shaofang Chen	28944901	Mol Med Rep	WB
Bin Zhu	31541631	Biochem Pharmacol	WB

## Lagerung

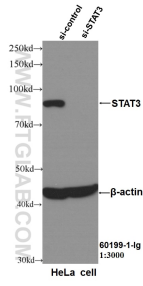
**Lagerungsbedingungen:**  
Bei -20°C lagern. Nach dem Versand ein Jahr lang stabil  
**Lagerungspuffer:**  
PBS mit 0.02% Natriumazid und 50% Glycerin pH 7.3.  
Aliquotieren ist nicht notwendig bei -20°C Lagerung

\*\*\* 20ul-Größen enthalten 0.1% BSA

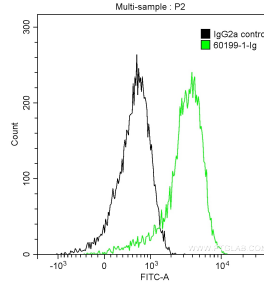
For technical support and original validation data for this product please contact:  
T: 1 (888) 4PTGLAB (1-888-478-4522) (toll free in USA), or 1(312) 455-8498 (outside USA)  
E: [proteintech@ptglab.com](mailto:proteintech@ptglab.com)  
W: [ptglab.com](http://ptglab.com)

This product is exclusively available under Proteintech Group brand and is not available to purchase from any other manufacturer.

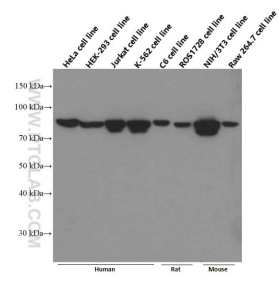
## Ausgewählte Validierungsdaten



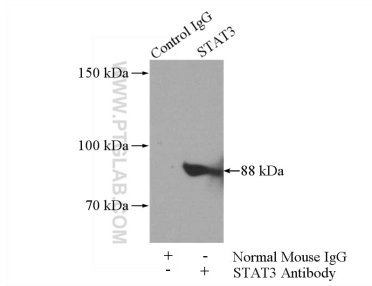
WB result of STAT3 antibody (60199-1-Ig, 1:3000) with si-Control and si-STAT3 transfected HeLa cells.



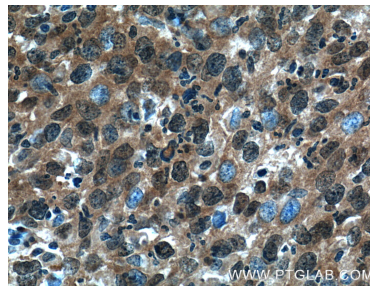
1X10<sup>6</sup> HepG2 cells were intracellularly stained with 0.5 ug Anti-Human STAT3 (60199-1-Ig, Clone:3G2D12) and Coralite®488-Conjugated AffiniPure Goat Anti-Mouse IgG(H+L) at dilution 1:1000 (green), and 0.5 ug Mouse IgG2a Isotype Control (66360-2-Ig, Clone: K11A1B2A2) (black). Cells were fixed with 4% PFA and permeabilized with 0.1% TritonX-100.



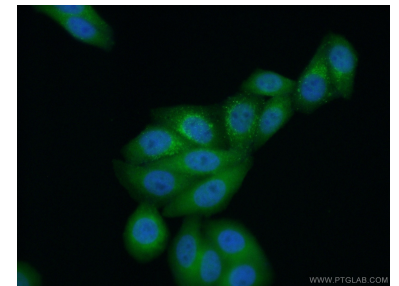
Western blot analysis of STAT3 in various cell lines using Proteintech antibody 60199-1-Ig at dilution of 1:5000 incubated at room temperature for 1.5 hours.



IP Result of anti-STAT3 (IP:60199-1-Ig, 5ug; Detection:60199-1-Ig 1:2000) with HeLa cells lysate 1400ug.



Immunohistochemical analysis of paraffin-embedded human cervical cancer tissue slide using 60199-1-Ig (STAT3 Antibody) at dilution of 1:400 (under 40x lens). Heat mediated antigen retrieval with Tris-EDTA buffer (pH 9.0).



Immunofluorescent analysis of (10% Formaldehyde ) fixed HepG2 cells using 60199-1-Ig(STAT3 antibody) at dilution of 1:100 and Alexa Fluor 488-conjugated AffiniPure Goat Anti-Mouse IgG(H+L).