

Nur für Forschungszwecke

# Galectin-3 Monoklonaler Antikörper



Katalog-Nr.:60207-1-Ig

Vorgestelltes Produkt

28 Publikationen

## Allgemeine Informationen

<b>Katalog-Nr.:</b> 60207-1-Ig	<b>GenBank-Zugangsnummer:</b> BC001120	<b>Reinigungsmethode:</b> Protein-A-Reinigung
<b>Größe:</b> 150ul , Konzentration: 1669 µg/ml von3958 Nanodrop und 833 µg/ml durch die Bradford-Methode mit BSA als Standard;	<b>GeneID (NCBI):</b> 3958	<b>CloneNo.:</b> 1C1B2
<b>Wirt:</b> Maus	<b>Vollständiger Name:</b> lectin, galactoside-binding, soluble, 3	<b>Empfohlene Verdünnungen:</b> WB 1:5000-1:50000 IHC 1:200-1:2000 IF 1:400-1:1600
<b>Isotyp:</b> IgG2b	<b>Berechnete Masse:</b> 26 kDa	
<b>Immunogen Katalognummer:</b> AG6753	<b>Beobachtete Masse:</b> 31 kDa	

## Anwendungen

### Geprüfte Anwendungen:

FC, IF, IHC, WB, ELISA

### In Publikationen genannte Anwendungen:

IF, IHC, IP, WB

### Getestete Reaktivität:

Human, Maus, Ratte

### Zitierte Arten:

Human, Maus, Ratte

**Hinweis-IHC: Antigendemaskierung mit TE-Puffer pH 9,0 empfohlen. (\*) Wahlweise kann die Antigendemaskierung auch mit Citratpuffer pH 6,0 erfolgen.**

### Positivkontrollen:

**WB** : A431-Zellen, A549-Zellen, Caco-2-Zellen, HeLa-Zellen, HepG2-Zellen, humanes Plazenta-Gewebe, MCF-7-Zellen, T-47D-Zellen

**IHC** : humanes Schilddrüsenkarzinomgewebe, humanes Kolongewebe, humanes Ovarialkarzinomgewebe

**IF** : HeLa-Zellen, humanes Schilddrüsenkarzinomgewebe, MCF-7-Zellen

## Hintergrundinformationen

Galectins are a family of animal lectins defined by shared characteristic amino-acid sequences and affinity for  $\beta$ -galactose-containing oligosaccharides (PMID: 8063692). Galectin-3, a member of the  $\beta$ -galactoside-binding proteins, contains one carbohydrate recognition domain (CRD) and a proline- and glycine-rich N-terminal domain through which is able to form oligomers (PMID: 14758078). Galectin-3 is widely expressed in many normal tissues and a variety of tumors. It is found intracellularly in nucleus and cytoplasm or secreted outside of cell, being present on the cell surface or in the extracellular space (PMID: 16478649). Galectin-3 is involved in various biological processes including cell growth, adhesion, differentiation, apoptosis, angiogenesis, immune response, neoplastic transformation and metastasis (PMID: 16478649; 14758078).

## Bemerkenswerte Veröffentlichungen

Verfasser	Pubmed ID	Journal	Anwendung
Vinay V Eapen	34585663	Elife	WB,IF
Dandan Zong	36332381	Sleep Med	WB
Ying Li	33124742	FASEB J	WB

## Lagerung

### Lagerungsbedingungen:

Bei -20°C lagern. Nach dem Versand ein Jahr lang stabil

### Lagerungspuffer:

PBS mit 0.02% Natriumazid und 50% Glycerin pH 7.3.

Aliquotieren ist nicht notwendig bei -20°C Lagerung

\*\*\* 20ul-Größen enthalten 0.1% BSA

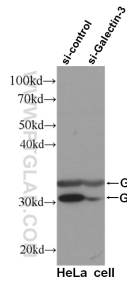
For technical support and original validation data for this product please contact:

T: 1 (888) 4PTGLAB (1-888-478-4522) (toll free in USA), or 1(312) 455-8498 (outside USA)

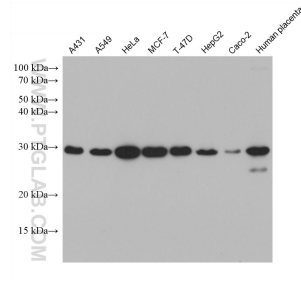
E: proteintech@ptglab.com  
W: ptglab.com

This product is exclusively available under Proteintech Group brand and is not available to purchase from any other manufacturer.

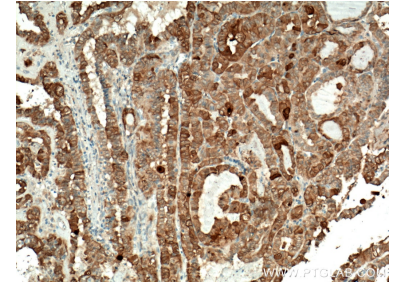
## Ausgewählte Validierungsdaten



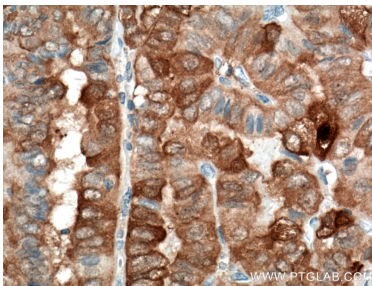
WB result of Galectin-3 specific antibody (60207-1-Ig, 1:1000) with si-control and si-Galectin-3 transfected HeLa cells.



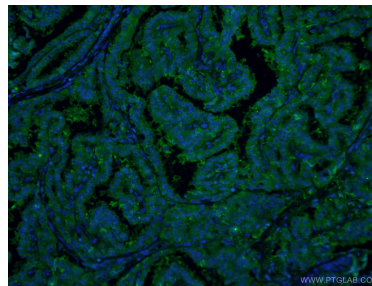
Various lysates were subjected to SDS PAGE followed by western blot with 60207-1-Ig (Galectin-3 antibody) at dilution of 1:10000 incubated at room temperature for 1.5 hours.



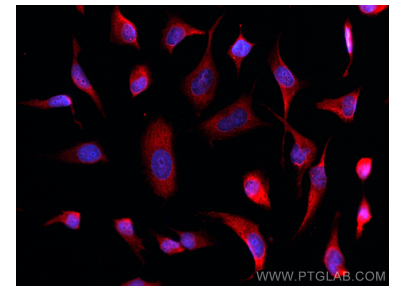
Immunohistochemical analysis of paraffin-embedded human thyroid cancer tissue slide using 60207-1-Ig (Galectin-3 antibody) at dilution of 1:2000 (under 10x lens. Heat mediated antigen retrieval with Tris-EDTA buffer (pH 9.0).



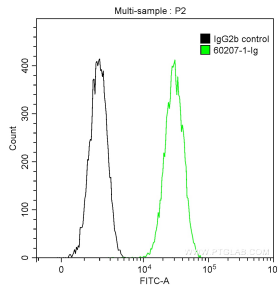
Immunohistochemical analysis of paraffin-embedded human thyroid cancer tissue slide using 60207-1-Ig (Galectin-3 antibody) at dilution of 1:2000 (under 40x lens. Heat mediated antigen retrieval with Tris-EDTA buffer (pH 9.0).



Immunofluorescent analysis of (4% PFA) fixed human thyroid cancer tissue using 60207-1-Ig (Galectin-3 antibody) at dilution of 1:100 and Alexa Fluor 488-Conjugated AffiniPure Goat Anti-Mouse IgG(H+L).



Immunofluorescent analysis of (-20°C Ethanol) fixed HeLa cells using Galectin-3 antibody (60207-1-Ig, Clone: 1C1B2) at dilution of 1:800 and CoraLite@594-Conjugated AffiniPure Goat Anti-Mouse IgG(H+L).



$1 \times 10^6$  HeLa cells were stained with 0.2  $\mu$ g Anti-Human Galectin-3 (60207-1-Ig, Clone:1C1B2) and CoraLite@488-Conjugated AffiniPure Goat Anti-Mouse IgG(H+L) at dilution 1:1000 (green), or stained with 0.2  $\mu$ g isotype control antibody and CoraLite@488-Conjugated AffiniPure Goat Anti-Mouse IgG(H+L) at dilution 1:1000 (black). Cells were fixed with 90% MeOH.