

Allgemeine Informationen

Katalog-Nr.: 60208-2-Ig	GenBank-Zugangsnummer: BC064417	Reinigungsmethode: Protein-A-Reinigung
Größe: 150ul , Konzentration: 1100 µg/ml von2208 Nanodrop und 900 µg/ml durch die Bradford-Methode mit BSA als Standard;	GeneID (NCBI): Vollständiger Name: Fc fragment of IgE, low affinity II, receptor for (CD23)	CloneNo.: 4C7C9 Empfohlene Verdünnungen: WB 1:1000-1:4000 IHC 1:50-1:500 IF 1:50-1:500
Wirt: Maus	Berechnete Masse: 321 aa, 36 kDa	
Isotyp: IgG2a	Beobachtete Masse: 40 kDa	
Immunogen Katalognummer: AG0425		

Anwendungen

Geprüfte Anwendungen: FC, IF, IHC, WB, ELISA	Positivkontrollen: WB : Raji-Zellen, IHC : humanes Tonsillitisgewebe, humanes Lymphomgewebe IF : humanes Tonsillitisgewebe,
Getestete Reaktivität: Human, Maus	
Hinweis-IHC: Antigenmaskierung mit TE- Puffer pH 9,0 empfohlen. (*) Wahlweise kann die Antigenmaskierung auch mit Citratpuffer pH 6,0 erfolgen.	

Hintergrundinformationen

CD23, also known as low affinity immunoglobulin epsilon Fc receptor, is a transmembrane glycoprotein present on a subpopulation of B lymphocytes in germinal centres, EBV-transformed B-lymphoblastoid cell lines, follicular dendritic cells, and a subpopulation of peripheral blood cells. CD23 has essential roles in the regulation of IgE production and in the differentiation of B-cells.

Lagerung

Lagerungsbedingungen:
Bei -20°C lagern. Nach dem Versand ein Jahr lang stabil
Lagerungspuffer:
PBS mit 0.02% Natriumazid und 50% Glycerin pH 7.3.
Aliquotieren ist nicht notwendig bei -20°C Lagerung

***** 20ul-Größen enthalten 0.1% BSA**

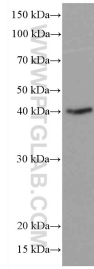
For technical support and original validation data for this product please contact:

T: 1 (888) 4PTGLAB (1-888-478-4522) (toll free
in USA), or 1(312) 455-8498 (outside USA)

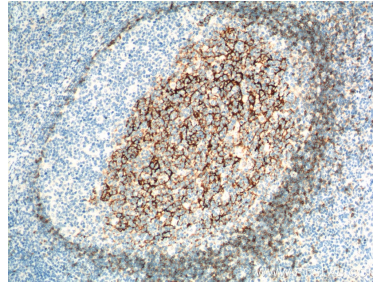
E: proteintech@ptglab.com
W: ptglab.com

**This product is exclusively available under Proteintech
Group brand and is not available to purchase from any
other manufacturer.**

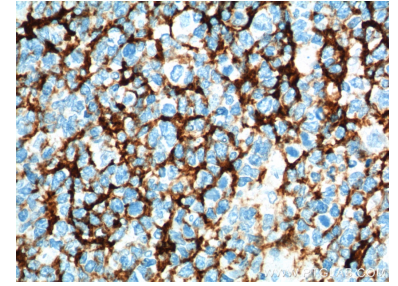
Ausgewählte Validierungsdaten



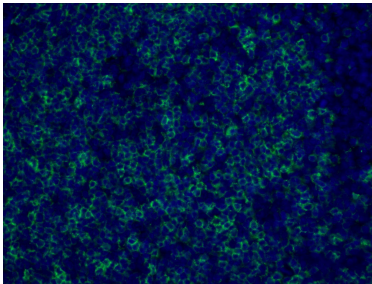
Raji cells were subjected to SDS PAGE followed by western blot with 60208-2-Ig (CD23 antibody) at dilution of 1:4000 incubated at room temperature for 1.5 hours.



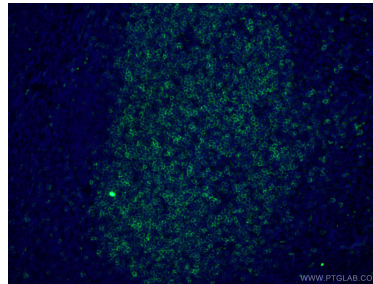
Immunohistochemical analysis of paraffin-embedded human tonsillitis tissue slide using 60208-2-Ig (CD23 antibody at dilution of 1:200 (under 10x lens). Heat mediated antigen retrieval with Tris-EDTA buffer (pH 9.0).



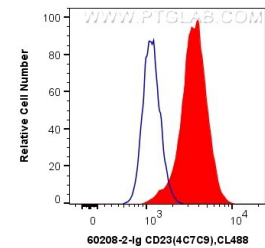
Immunohistochemical analysis of paraffin-embedded human tonsillitis tissue slide using 60208-2-Ig (CD23 antibody at dilution of 1:200 (under 40x lens). Heat mediated antigen retrieval with Tris-EDTA buffer (pH 9.0).



Immunofluorescent analysis of (4% PFA) fixed human tonsillitis tissue using 60208-2-Ig (CD23 antibody) at dilution of 1:100 and Alexa Fluor 488-conjugated AffiniPure Goat Anti-Mouse IgG(H+L).



Immunofluorescent analysis of (4% PFA) fixed human tonsillitis tissue using 60208-2-Ig (CD23 antibody) at dilution of 1:100 and Alexa Fluor 488-conjugated AffiniPure Goat Anti-Mouse IgG(H+L).



1X10⁶ Raji cells were intracellularly stained with 0.5 ug Anti-Human CD23 (60208-2-Ig, Clone:4C7C9) and CoraLite®488-Conjugated AffiniPure Goat Anti-Mouse IgG(H+L) at dilution 1:1000 (red), or 0.5 ug Mouse IgG2a Isotype Control (66360-2-Ig, Clone: K11A1B2A2) (blue). Cells were fixed with 4% PFA and permeabilized with Flow Cytometry Perm Buffer (PF00011-C).