

Nur für Forschungszwecke

BCS1L Monoklonaler Antikörper

Katalog-Nr.:60212-1-Ig

Vorgestelltes Produkt



Allgemeine Informationen

Katalog-Nr.:

60212-1-Ig

Größe:

150ul, Konzentration: 1100 µg/ml von617

Nanodrop und 860 µg/ml durch die Bradford-Methode mit BSA als Standard;

Wirt:

Maus

Isotyp:

IgG1

Immunogen Katalognummer:

AG18280

GenBank-Zugangsnummer:

BC007500

GeneID (NCBI):

Vollständiger Name:

BCS1-like (yeast)

Berechnete Masse:

48 kDa

Beobachtete Masse:

47 kDa

Reinigungsmethode:

Protein-G-Reinigung

CloneNo.:

3G6H1

Empfohlene Verdünnungen:

WB 1:500-1:2000

IHC 1:20-1:200

IF 1:20-1:200

Anwendungen

Geprüfte Anwendungen:

IF, IHC, WB, ELISA

Getestete Reaktivität:

Human, Maus

Hinweis-IHC: Antigenmaskierung mit TE-Puffer pH 9,0 empfohlen. (*) Wahlweise kann die Antigenmaskierung auch mit Citratpuffer pH 6,0 erfolgen.

Positivkontrollen:

WB : Colo320 cells, COLO 320-Zellen, HEK-293-Zellen

IHC : humanes Gliomgewebe, humanes Hirngewebe, humanes Nierengewebe

IF : MCF-7-Zellen,

Hintergrundinformationen

Human BCS1-like (BCS1L), a mitochondrial inner-membrane protein, is a chaperone necessary for the assembly of mitochondrial respiratory chain complex III. Recently studies indicated that the mutations in this protein may cause the GRACILE (growth retardation, aminoaciduria, cholestasis, iron overload, lacticidosis, and early death) syndrome, a recessively inherited lethal disease characterized by fetal growth retardation, lactic acidosis, aminoaciduria, cholestasis, and abnormalities in iron metabolism.

Lagerung

Lagerungsbedingungen:

Bei -20°C lagern. Nach dem Versand ein Jahr lang stabil

Lagerungspuffer:

PBS mit 0.02% Natriumazid und 50% Glycerin pH 7.3.

Aliquotieren ist nicht notwendig bei -20°C Lagerung

*** 20ul-Größen enthalten 0.1% BSA

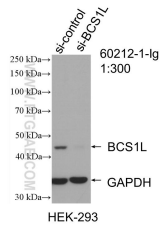
For technical support and original validation data for this product please contact:

T: 1 (888) 4PTGLAB (1-888-478-4522) (toll free in USA), or 1(312) 455-8498 (outside USA)

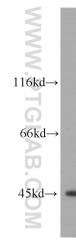
E: proteintech@ptglab.com
W: ptglab.com

This product is exclusively available under Proteintech Group brand and is not available to purchase from any other manufacturer.

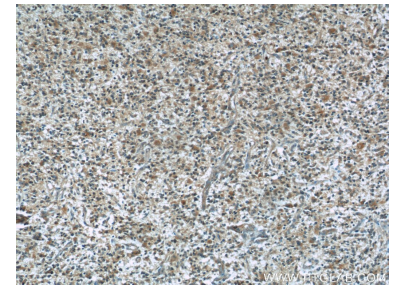
Ausgewählte Validierungsdaten



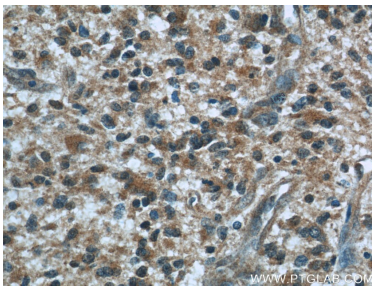
WB result of BCS1L antibody (60212-1-Ig; 1:300; incubated at room temperature for 1.5 hours) with sh-Control and sh-BCS1L transfected HEK-293 cells.



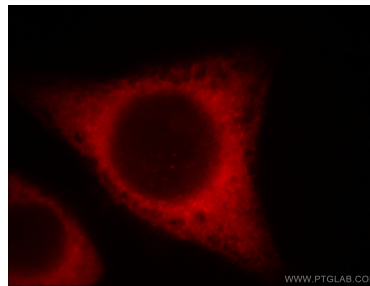
COLO 320 cells were subjected to SDS PAGE followed by western blot with 60212-1-Ig (BCS1L antibody) at dilution of 1:1000 incubated at room temperature for 1.5 hours.



Immunohistochemical analysis of paraffin-embedded human gliomas using 60212-1-Ig(BCS1L antibody) at dilution of 1:50 (under 10x lens).



Immunohistochemical analysis of paraffin-embedded human gliomas using 60212-1-Ig(BCS1L antibody) at dilution of 1:50 (under 40x lens).



Immunofluorescent analysis of () fixed MCF-7 cells using 60212-1-Ig (BCS1L antibody) at dilution of 1:50 and Rhodamine-Goat anti-Rabbit IgG.