

Allgemeine Informationen

Katalog-Nr.: 60216-1-Ig	GenBank-Zugangsnummer: BC036661	Reinigungsmethode: Protein-A-Reinigung
Größe: 150ul , Konzentration: 2700 µg/ml von57007 Nanodrop und 1267 µg/ml durch die Bradford-Methode mit BSA als Standard;	GeneID (NCBI): 57007	CloneNo.: 4C3D7
Wirt: Maus	Vollständiger Name: chemokine (C-X-C motif) receptor 7	Empfohlene Verdünnungen: WB 1:1000-1:6000 IHC 1:20-1:200 IF 1:200-1:800
Isotyp: IgG2b	Berechnete Masse: 362 aa, 41 kDa	
Immunogen Katalognummer: AG14247	Beobachtete Masse: 50-60 kDa	

Anwendungen

Geprüfte Anwendungen: IF, IHC, WB, ELISA	Positivkontrollen: WB : PC-3-Zellen, Jurkat-Zellen, K-562-Zellen, Raji-Zellen, THP-1-Zellen, U-87 MG-Zellen IHC : humanes Mammakarzinomgewebe, IF : humanes Mammakarzinomgewebe,
In Publikationen genannte Anwendungen: IHC	
Getestete Reaktivität: Human, Maus	
Zitierte Arten: Human	
Hinweis-IHC: Antigenmaskierung mit TE-Puffer pH 9,0 empfohlen. (*) Wahlweise kann die Antigenmaskierung auch mit Citratpuffer pH 6,0 erfolgen.	

Hintergrundinformationen

CXCR7 (C-X-C chemokine receptor type 7), also known as RDC1, is a member of the G-protein coupled receptor family. CXCR7 can bind the chemokines CXCL11 and CXCL12 with high affinity, and it also acts as coreceptor with CXCR4 for a restricted number of HIV isolates. Expression of CXCR7 has been associated with cardiac development as well as with tumor growth and progression. This antibody recognizes endogenous CXCR7, which has an experimentally determined molecular weight of 50 kDa (PMID: 20197403; 20388803).

Bemerkenswerte Veröffentlichungen

Verfasser	Pubmed ID	Journal	Anwendung
Pedro Bargão Santos	32278731	Urol Oncol	IHC

Lagerung

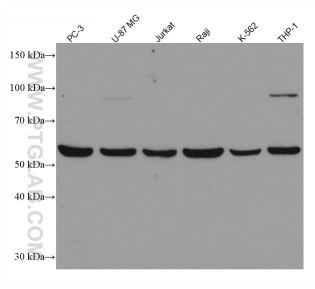
Lagerungsbedingungen:
Bei -20°C lagern. Nach dem Versand ein Jahr lang stabil
Lagerungspuffer:
PBS mit 0.02% Natriumazid und 50% Glycerin pH 7.3.
Aliquotieren ist nicht notwendig bei -20°C Lagerung

***** 20ul-Größen enthalten 0.1% BSA**

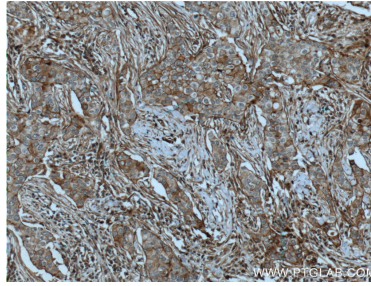
For technical support and original validation data for this product please contact:
T: 1 (888) 4PTGLAB (1-888-478-4522) (toll free in USA), or 1(312) 455-8498 (outside USA)
E: proteintech@ptglab.com
W: ptglab.com

This product is exclusively available under Proteintech Group brand and is not available to purchase from any other manufacturer.

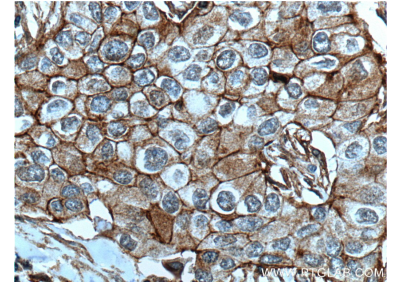
Ausgewählte Validierungsdaten



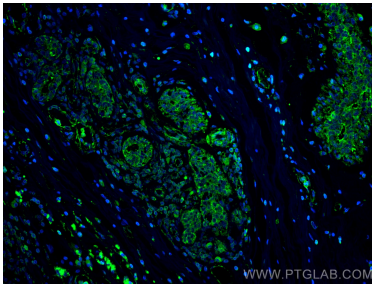
Various lysates were subjected to SDS PAGE followed by western blot with 60216-1-Ig (CXCR7 antibody) at dilution of 1:3000 incubated at room temperature for 1.5 hours.



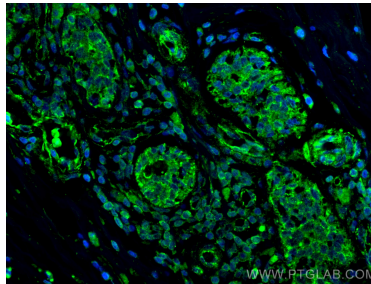
Immunohistochemical analysis of paraffin-embedded human breast cancer tissue slide using 60216-1-Ig (CXCR7 Antibody) at dilution of 1:200 (under 10x lens). Heat mediated antigen retrieval with Tris-EDTA buffer (pH 9.0).



Immunohistochemical analysis of paraffin-embedded human breast cancer tissue slide using 60216-1-Ig (CXCR7 Antibody) at dilution of 1:200 (under 40x lens). Heat mediated antigen retrieval with Tris-EDTA buffer (pH 9.0).



Immunofluorescent analysis of (4% PFA) fixed human breast cancer tissue using CXCR7 antibody (60216-1-Ig, Clone: 4C3D7) at dilution of 1:400 and CoraLite®488-Conjugated AffiniPure Goat Anti-Mouse IgG(H+L).



Immunofluorescent analysis of (4% PFA) fixed human breast cancer tissue using CXCR7 antibody (60216-1-Ig, Clone: 4C3D7) at dilution of 1:400 and CoraLite®488-Conjugated AffiniPure Goat Anti-Mouse IgG(H+L).