

Nur für Forschungszwecke

Cytoglobin Monoklonaler Antikörper



Katalog-Nr.:60228-1-Ig **2 Publikationen**

Allgemeine Informationen

Katalog-Nr.: 60228-1-Ig	GenBank-Zugangsnummer: BC029798	Reinigungsmethode: Protein-A-Reinigung
Größe: 150ul , Konzentration: 1000 µg/ml durch die Bradford-Methode mit BSA als Standard;	GeneID (NCBI): 114757	CloneNo.: 4C7E11
Wirt: Maus	Vollständiger Name: cytoglobin	Empfohlene Verdünnungen: WB 1:500-1:2000 IHC 1:200-1:800 IF 1:400-1:1600
Isotyp: IgG1	Berechnete Masse: 190 aa, 21 kDa	
Immunogen Katalognummer: AG4161	Beobachtete Masse: 27-29 kDa	

Anwendungen

Geprüfte Anwendungen: IF, IHC, WB, ELISA	Positivkontrollen: WB : Human heart, Hausschwein-Herzgewebe, humanes Herzgewebe, Kaninchenherzgewebe, Transfizierte HEK-293-Zellen
In Publikationen genannte Anwendungen: IF, WB	IHC : humanes Lebergewebe, humanes Blasengewebe, humanes Herzgewebe
Getestete Reaktivität: Hausschwein, Human, Maus, Ratte	IF : HeLa-Zellen,
Zitierte Arten: Human	
Hinweis-IHC: Antigenmaskierung mit TE-Puffer pH 9,0 empfohlen. (*) Wahlweise kann die Antigenmaskierung auch mit Citratpuffer pH 6,0 erfolgen.	

Hintergrundinformationen

Cytoglobin is a ubiquitously expressed hexacoordinate hemoglobin that may facilitate diffusion of oxygen through tissues. The protein, with calculated MW of 21 kDa, runs as a 29 kDa one in canine retina, kidney, liver, lung, and heart. It may be caused by posttranslational modification of the protein. Various immuno-staining patterns were reported including nuclear, cytoplasm and extracellular location.

Bemerkenswerte Veröffentlichungen

Verfasser	Pubmed ID	Journal	Anwendung
Shazhou Ye	33611811	J Cell Mol Med	WB
Peng Zhou	35397613	Cell Death Dis	WB,IF

Lagerung

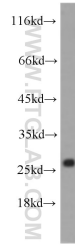
Lagerungsbedingungen:
Bei -20°C lagern. Nach dem Versand ein Jahr lang stabil
Lagerungspuffer:
PBS mit 0.02% Natriumazid und 50% Glycerin pH 7.3.
Aliquotieren ist nicht notwendig bei -20°C Lagerung

*** 20ul-Größen enthalten 0.1% BSA

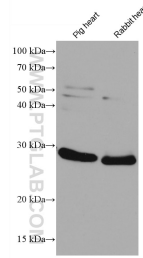
For technical support and original validation data for this product please contact:
T: 1 (888) 4PTGLAB (1-888-478-4522) (toll free in USA), or 1(312) 455-8498 (outside USA)
E: proteintech@ptglab.com
W: ptglab.com

This product is exclusively available under Proteintech Group brand and is not available to purchase from any other manufacturer.

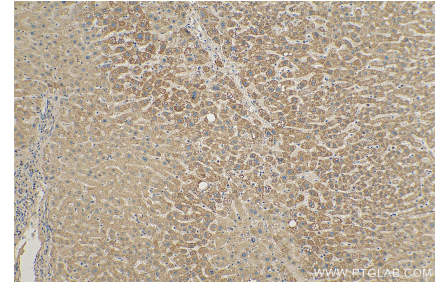
Ausgewählte Validierungsdaten



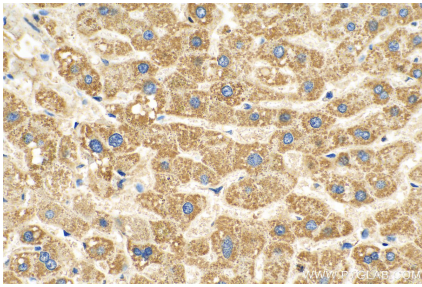
human heart tissue were subjected to SDS PAGE followed by western blot with 60228-1-Ig (Cytoglobin antibody) at dilution of 1:1000 incubated at room temperature for 1.5 hours.



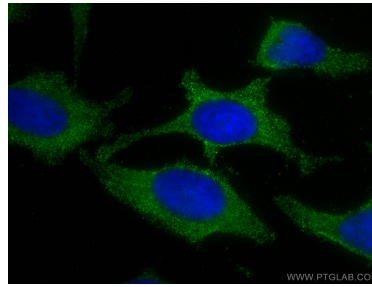
Various lysates were subjected to SDS PAGE followed by western blot with 60228-1-Ig (Cytoglobin antibody) at dilution of 1:10000 incubated at room temperature for 1.5 hours.



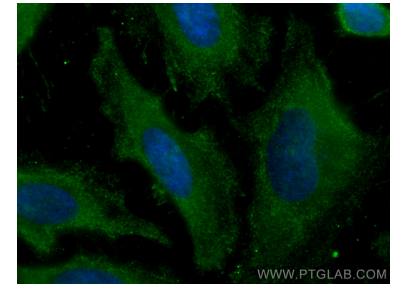
Immunohistochemical analysis of paraffin-embedded human liver tissue slide using 60228-1-Ig (Cytoglobin antibody) at dilution of 1:400 (under 10x lens). Heat mediated antigen retrieval with Tris-EDTA buffer (pH 9.0).



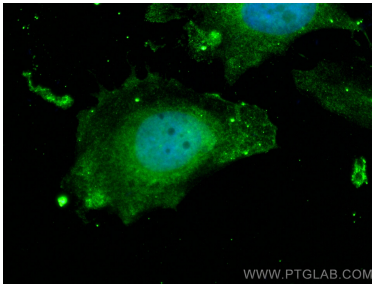
Immunohistochemical analysis of paraffin-embedded human liver tissue slide using 60228-1-Ig (Cytoglobin antibody) at dilution of 1:400 (under 40x lens). Heat mediated antigen retrieval with Tris-EDTA buffer (pH 9.0).



Immunofluorescent analysis of (-20°C Methanol) fixed HeLa cells using Cytoglobin antibody (60228-1-Ig, Clone: 4C7E11) at dilution of 1:400 and CoraLite®488-Conjugated AffiniPure Goat Anti-Mouse IgG(H+L).



Immunofluorescent analysis of (-20°C Methanol) fixed HeLa cells using Cytoglobin antibody (60228-1-Ig, Clone: 4C7E11) at dilution of 1:800 and CoraLite®488-Conjugated AffiniPure Goat Anti-Mouse IgG(H+L).



Immunofluorescent analysis of (4% PFA) fixed HeLa cells using Cytoglobin antibody (60228-1-Ig, Clone: 4C7E11) at dilution of 1:800 and CoraLite®488-Conjugated AffiniPure Goat Anti-Mouse IgG(H+L).