

Nur für Forschungszwecke

Myosin Light Chain 2/MLC-2V Monoklonaler Antikörper



Katalog-Nr.: 60229-1-Ig **3 Publikationen**

Allgemeine Informationen

Katalog-Nr.: 60229-1-Ig	GenBank-Zugangsnummer: BC015821	Reinigungsmethode: Protein-A-Reinigung
Größe: 150ul, Konzentration: 1500 µg/ml von 4633 Nanodrop;	GeneID (NCBI): 5A1F1	CloneNo.: 5A1F1
Wirt: Maus	Vollständiger Name: myosin, light chain 2, regulatory, cardiac, slow	Empfohlene Verdünnungen: WB 1:5000-1:50000 IHC 1:500-1:2000 IF 1:50-1:500
Isotyp: IgG1	Berechnete Masse: 19 kDa	
Immunogen Katalognummer: AG1356	Beobachtete Masse: 18 kDa	

Anwendungen

Geprüfte Anwendungen:

IF, IHC, WB, ELISA

In Publikationen genannte Anwendungen:

IF, WB

Getestete Reaktivität:

Hausschwein, Human, Kaninchen, Maus, Ratte

Zitierte Arten:

Human, Ratte

Hinweis-IHC: Antigendemaskierung mit TE-Puffer pH 9,0 empfohlen. (*) Wahlweise kann die Antigendemaskierung auch mit Citratpuffer pH 6,0 erfolgen.

Positivkontrollen:

WB: humanes Herzgewebe, Hausschwein-Herzgewebe, Kaninchenherzgewebe, Rattenherzgewebe

IHC: Mausherzgewebe, humanes Herzgewebe, Maus-Skelettmuskulgewebe

IF: C2C12 cell,

Hintergrundinformationen

MYL2, also named as MLC-2v and MLC-2, is ventricular/cardiac muscle isoform. Defects in MYL2 are the cause of cardiomyopathy familial hypertrophic type 10 (CMH10). Defects in MYL2 are the cause of cardiomyopathy familial hypertrophic with mid-left ventricular chamber type 2 (MVC2). MYL2 has been widely used as a marker of mature ventricular cardiomyocytes.

Bemerkenswerte Veröffentlichungen

Verfasser	Pubmed ID	Journal	Anwendung
Xiangyu Zhang	35246800	Stem Cell Rev Rep	IF
Jingcheng Wang	36042011	Int J Stem Cells	WB
Y Wang	26269433	Stem Cells	IF

Lagerung

Lagerungsbedingungen:

Bei -20°C lagern. Nach dem Versand ein Jahr lang stabil

Lagerungspuffer:

PBS mit 0.02% Natriumazid und 50% Glycerin pH 7.3.

Aliquotieren ist nicht notwendig bei -20°C Lagerung

***** 20ul-Größen enthalten 0.1% BSA**

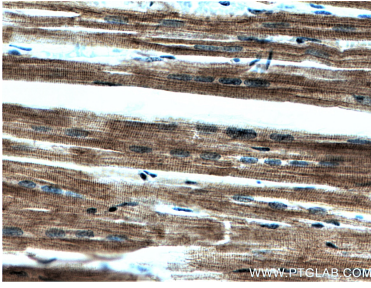
For technical support and original validation data for this product please contact:

T: 1 (888) 4PTGLAB (1-888-478-4522) (toll free in USA), or 1(312) 455-8498 (outside USA)

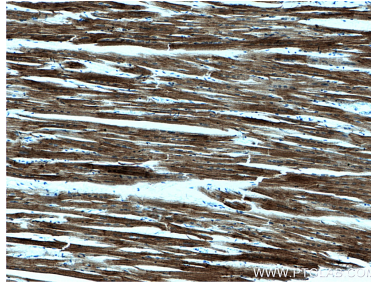
E: proteintech@ptglab.com
W: ptglab.com

This product is exclusively available under Proteintech Group brand and is not available to purchase from any other manufacturer.

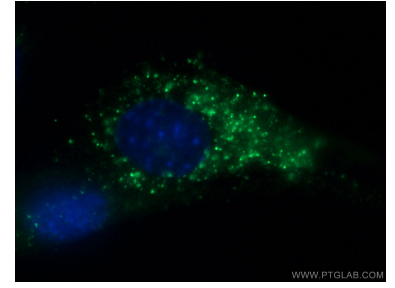
Ausgewählte Validierungsdaten



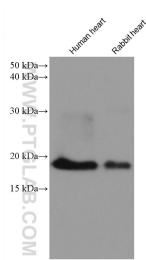
Immunohistochemical analysis of paraffin-embedded human heart tissue slide using 60229-1-Ig (Myosin Light Chain 2 antibody) at dilution of 1:500 (under 0x lens).



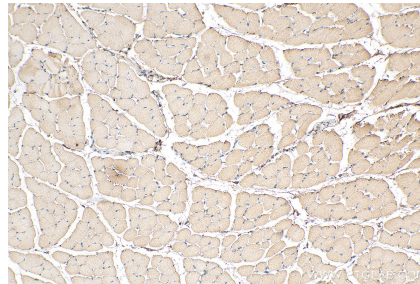
Immunohistochemical analysis of paraffin-embedded human heart tissue slide using 60229-1-Ig (Myosin Light Chain 2 antibody) at dilution of 1:500 (under 0x lens).



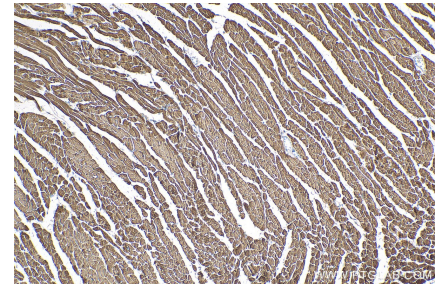
Immunofluorescent analysis of (4% PFA) fixed C2C12 cell using 60229-1-Ig (Myosin Light Chain 2 antibody) at dilution of 1:100 and Alexa Fluor 488-conjugated AffiniPure Goat Anti-Mouse IgG(H+L).



Various lysates were subjected to SDS PAGE followed by western blot with 60229-1-Ig (Myosin Light Chain 2/MLC-2V antibody) at dilution of 1:10000 incubated at room temperature for 1.5 hours.



Immunohistochemical analysis of paraffin-embedded mouse skeletal muscle tissue slide using 60229-1-Ig (Myosin Light Chain 2/MLC-2V antibody) at dilution of 1:1000 (under 10x lens). Heat mediated antigen retrieval with Tris-EDTA buffer (pH 9.0).



Immunohistochemical analysis of paraffin-embedded mouse heart tissue slide using 60229-1-Ig (Myosin Light Chain 2/MLC-2V antibody) at dilution of 1:1000 (under 10x lens). Heat mediated antigen retrieval with Tris-EDTA buffer (pH 9.0).