

Nur für Forschungszwecke

# PLAA Monoklonaler Antikörper

Katalog-Nr.: 60244-1-Ig

Vorgestelltes Produkt



## Allgemeine Informationen

<b>Katalog-Nr.:</b> 60244-1-Ig	<b>GenBank-Zugangsnummer:</b> BC032551	<b>Reinigungsmethode:</b> Protein-A-Reinigung
<b>Größe:</b> 150ul, Konzentration: 1360 µg/ml durch die Bradford-Methode mit BSA als Standard;	<b>GeneID (NCBI):</b> 9373	<b>CloneNo.:</b> 5C10G9
<b>Wirt:</b> Maus	<b>Vollständiger Name:</b> phospholipase A2-activating protein	<b>Empfohlene Verdünnungen:</b> WB 1:500-1:2000 IHC 1:50-1:500
<b>Isotyp:</b> IgG1	<b>Berechnete Masse:</b> 738 aa, 81 kDa	
<b>Immunogen Katalognummer:</b> AG3224	<b>Beobachtete Masse:</b> 75-80 kDa	

## Anwendungen

<b>Geprüfte Anwendungen:</b> IHC, WB, ELISA	<b>Positivkontrollen:</b>
<b>Getestete Reaktivität:</b> Human, Maus, Ratte	<b>WB:</b> ROS1728-Zellen, A431-Zellen, K-562-Zellen, MCF-7-Zellen
<b>Hinweis-IHC:</b> Antigenmaskierung mit <b>TE-Puffer pH 9,0 empfohlen. (*) Wahlweise kann die Antigenmaskierung auch mit Citratpuffer pH 6,0 erfolgen.</b>	<b>IHC:</b> humanes Nierengewebe,

## Hintergrundinformationen

Phospholipase A-2-activating protein (PLAA), also named PLAP, can interact with ubiquitin and is involved in the maintenance of ubiquitin levels. PLAA contains multiple consensus domains including WD repeats, PFU domain and PUL domain. Although the function of PLAA remains unclear, ubiquitin binding of PLAA might be the central role that connects ubiquitination and degradation in ERAD. Recent finding revealed that PLAA served as a novel nociveptive mediator after incision, and its expression level is regulated by miR-203.

## Lagerung

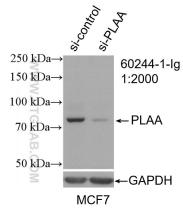
**Lagerungsbedingungen:**  
Bei -20°C lagern. Nach dem Versand ein Jahr lang stabil  
**Lagerungspuffer:**  
PBS mit 0.02% Natriumazid und 50% Glycerin pH 7.3.  
Aliquotieren ist nicht notwendig bei -20°C Lagerung

\*\*\* 20ul-Größen enthalten 0.1% BSA

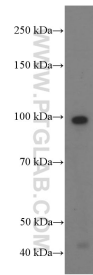
For technical support and original validation data for this product please contact:  
T: 1 (888) 4PTGLAB (1-888-478-4522) (toll free in USA), or 1(312) 455-8498 (outside USA)  
E: proteintech@ptglab.com  
W: ptglab.com

This product is exclusively available under Proteintech Group brand and is not available to purchase from any other manufacturer.

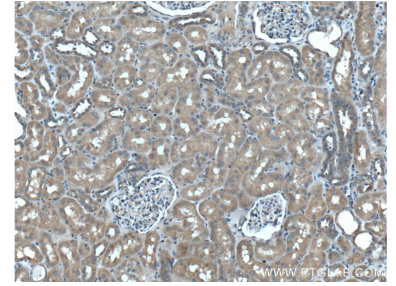
## Ausgewählte Validierungsdaten



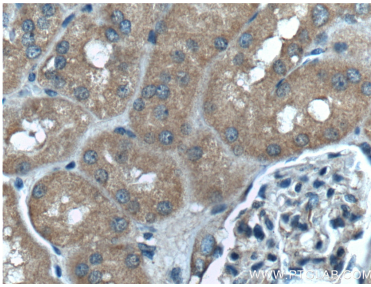
WB result of PLAA antibody (60244-1-Ig; 1:2000; incubated at room temperature for 1.5 hours) with sh-Control and sh-PLAA transfected MCF-7 cells.



ROS1728 cells were subjected to SDS PAGE followed by western blot with 60244-1-Ig (PLAA Antibody) at dilution of 1:1000 incubated at room temperature for 1.5 hours.



Immunohistochemical analysis of paraffin-embedded human kidney tissue slide using 60244-1-Ig (PLAA Antibody) at dilution of 1:200 (under 10x lens).



Immunohistochemical analysis of paraffin-embedded human kidney tissue slide using 60244-1-Ig (PLAA Antibody) at dilution of 1:200 (under 40x lens).