

Nur für Forschungszwecke

4EBP1 Monoklonaler Antikörper

Katalog-Nr.:60246-1-Ig

Vorgestelltes Produkt

40 Publikationen



Allgemeine Informationen

Katalog-Nr.:
60246-1-Ig

Größe:
150ul, Konzentration: 2800 µg/ml von1978
Nanodrop und 1600 µg/ml durch die
Bradford-Methode mit BSA als
Standard;

Wirt:
Maus

Isotyp:
IgG2b

Immunogen Katalognummer:
AG18985

GenBank-Zugangsnummer:
BC004459

GeneID (NCBI):
von1978

Vollständiger Name:
eukaryotic translation initiation
factor 4E binding protein 1

Berechnete Masse:
118 aa, 12 kDa

Beobachtete Masse:
15-24 kDa

Reinigungsmethode:
Protein-A-Reinigung

CloneNo.:
2C3F3

Empfohlene Verdünnungen:
WB 1:1000-1:4000
IF 1:20-1:200

Anwendungen

Geprüfte Anwendungen:

IF, WB, ELISA

In Publikationen genannte Anwendungen:

IHC, WB

Getestete Reaktivität:

Hausschwein, Human, Maus, Ratte

Zitierte Arten:

Huhn, Human

Positivkontrollen:

WB : K-562-Zellen, C6-Zellen, HCT 116-Zellen, K562,
NCI-H1299-Zellen, RAW 264.7-Zellen

IF : HeLa-Zellen,

Hintergrundinformationen

Eukaryotic translation initiation factor 4E-binding protein 1(4EBP1), is a member of 4EBPs family, which regulate the translation of a subset of mRNA by competing with eIF4G for binding to eIF4E, thus preventing the assembly of the eIF4F complex. The eIF4F facilitates the recruitment of other translation initiation factors to form the complex and then initiates cap-dependent translation.4EBP1 also mediates the regulation of protein translation by growth factors, hormones and other stimuli that signal through the MAP kinase and mTORC1 pathways. There are three forms of 4EBP1, alpha, beta and gamma.typical pattern seen on Western blots for phosphorylated heat-acid stabled protein 4EBP1 from rat gastrocnemius muscle. Three distinct bands are noted, with the most rapidly migrating band having an apparent molecular mass of; 20 kDa and the slowest migrating band of; 24 kDa. The 3 bands are designated by convention as alpha, beta and gamma. (PMID: 10913029)

Bemerkenswerte Veröffentlichungen

Verfasser	Pubmed ID	Journal	Anwendung
Cefan Zhou	32972302	Autophagy	WB
Minfen Zhang	34520393	Aging (Albany NY)	WB
Hai-Feng Wang	30218751	Gene	WB

Lagerung

Lagerungsbedingungen:

Bei -20°C lagern. Nach dem Versand ein Jahr lang stabil

Lagerungspuffer:

PBS mit 0.02% Natriumazid und 50% Glycerin pH 7.3.

Aliquotieren ist nicht notwendig bei -20°C Lagerung

*** 20ul-Größen enthalten 0.1% BSA

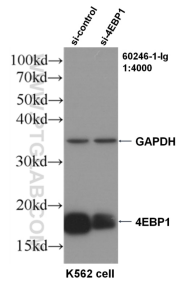
For technical support and original validation data for this product please contact:

T: 1 (888) 4PTGLAB (1-888-478-4522) (toll free
in USA), or 1(312) 455-8498 (outside USA)

E: proteintech@ptglab.com
W: ptglab.com

This product is exclusively available under Proteintech Group brand and is not available to purchase from any other manufacturer.

Ausgewählte Validierungsdaten



WB result of 4EBP1 antibody (60246-1-Ig, 1:4000) with si-Control and si-4EBP1 transfected K562 cells.

K-562 cells were subjected to SDS PAGE followed by western blot with 60246-1-Ig (4EBP1 antibody) at dilution of 1:2000 incubated at room temperature for 1.5 hours.

